

Instruction of GL series load-isolation switch

Service environment

- GL load-isolation switch can operate under the following conditions
- Altitude not more than 2000m;
- The range of ambient temperature is from 5°C to 40°C;
- Relative humidity not more than 95%;
- The environment without any explosive medium.
- The environment without any rain or snow attacking. Operating voltage: rated voltage $\pm 15\%$.

Note: If the product is expected to be used in the environment where temperature is over +40°C or below -5°C ~ -45°C, users shall tell it to the manufacturer. The products are in conformity with GB/T14048.3-2008 Low-voltage switchgear and controlgear - Part 3: Switches disconnectors switchdisconnectors and fuse-combination units.

Application

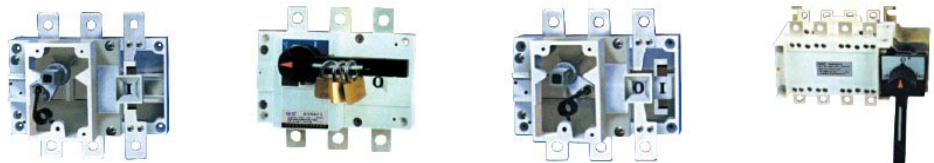
AC 50Hz, rated voltage 660V, DC rated voltage 440V, rated current 1600A. It is used for making and breaking circuit infrequently.

GL - □ - □ A / □ J K □ B H
1 2 3 4 5 6 7 8 9

1. Code of loadisolation switch
2. C side operates the loadisolation switch; Z transfer loadisolation switch
3. Rated current
4. Pole No. 3 poles 4 poles(3 poles + switch the neutral pole)
5. Operate outside of cabinet, don't note if operate inside of cabinet.
6. Direct observe the contact window, don't note if no necessary.
7. The code of auxiliary contact function (see table), don't note if no necessary.
8. Connected wire back of the plate, don't note if connected wire front of plate.
9. Operated back of the cabinet, don't note if no necessary.

One NO and one NC	11	NO+NC
Two NO and Two NC	22	2NO+2NC

Example for lectotype: Rated current 630A, include neutral pole transferring loadisolation switch, GL Z-630A/4J for operating outside of cabinet



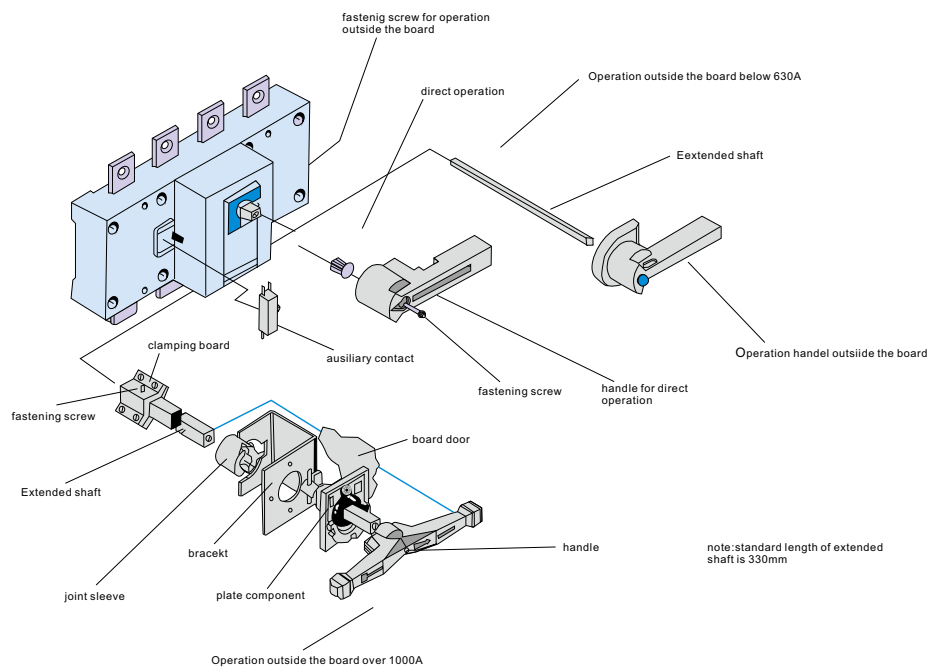
GL Loadisolation switch can be divided into 18 specs from 63A to 3150A, it is the basic type of module design, it has three poles and four poles (three poles + switch neutral pole), applied to make and break circuit or electric isolate, over 1000A is only for electric isolation.

Symbol window on front face indicates the contact on-off state.

Operation mode

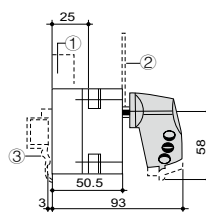
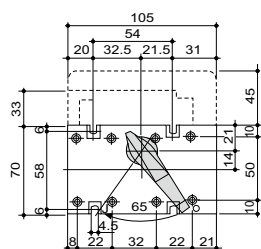
- Direct operation: The handle is installed in the middle of switch directly.
- Operate outside of cabinet: The handle is installed outside of distribution cabinet.
- It can be assembled two groups auxiliary contacts.

1

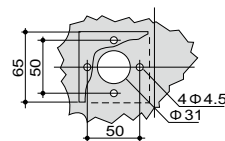


GL-40~63A

Front direct operation

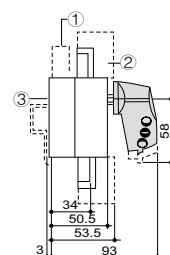
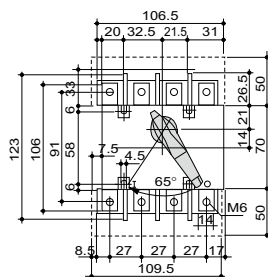


Front operation outside the cabinet

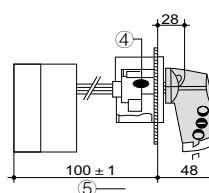


GL-80~100A

Front direct operation



Front operation outside the cabinet



- 1.Pre-breaking auxiliary contact
- 2.Terminal barrier
- 3.Clamp for fixing DIN rail

4. The width of sliding dead bolt of handle lock is 30mm.
5. The min length of extension shaft is 125 ± 1

GL-63~4000A Electrical Properties and Mechanical Properties

Conventional heating current I _{th} A	63A 100A	125A 160A	200A	250A	315A	400A	500A	630A	800A	1000A	1250A	1600A	2000A	2500A	3150A	4000A
Rated insulation voltage U _i (V)	750	750	750	750	750	750	750	750	750	750	750	750	750	750	750	750
Dielectric strength																
Rated impaction withstand voltage U _{imp} KV (Installation sort IV)	6	8	8	8	8	8	8	8	8	8	8	8	8	8	8	8
Rated working current I _e (A)																
400V AC21B AC22B AC23B	63/100	125/160	200	250	315	400	500	630	800	1000	1250	1600	2000	2500	3150	3150
	63/100	125/160	200	250	315	400	500	630	800	1000	1250	1250	2000	2000	2500	2500
	50/80	125/160	200	250	315	400	500	630	800	1000	1000	1000	1250	1250	1250	1250
750V AC21B AC22B AC23B	63/100	125/160	200	250	315	400	400	500	800	1000	1250	1600	2000	2500	3150	4000
	63/80	125	160	160	315	315	315	315	630	800	800	800	1000	1000	2500	2500
	40/63	80	100	125	200	200	200	200	250	500	500	500	800	800	800	1000
Overload capacity																
Rated short-time withstand current I _{sw} (KA Rms)0.1S/1.0S	3	3	3	3	20	20	20	20	30	30	30	30	37.8	37.8	37.8	48
Making and breaking capacity																
Rated making capacity I _{cn} (A Rms)AC 23 400V	400	1000	1600	2000	2500	3150	4000	5000	6300	3000	3750	4800	6000	7500	9450	
Rated breaking capacity I _{cm} (A Rms)AC22B 400V	189	375/480	600	750	945	1200	1500	1890	2400	3000	3750	4800	6000	7500	9450	
Rated short-circuit making capacity I _{cm} (KA peak value)	1.7	3.375	5.63	5.63	23	23	23	23	35	35	35	35	79.38	79.38	79.38	
Mechanical life (rotation operation time)	1700	1400	1400	1400	1400	800	800	800	500	500	500	500	500	500	300	300
Electrical life (rotation operation time)	300	200	200	200	200	200	200	200	100	100	100	100	100	100	100	100
Rated voltage U _e =750V Rated current I _e COSΦ=0.95 AC21B COSΦ=0.65 AC22B COSΦ=0.35 AC23B																
Operation moment (Nm)	3.5	6.5	14.4	14.4	18	18	18	18	35	35	35	35	60	60	60	110
Weight (Kg) 3 poles 4 poles	0.37	1	2	2	3.5	3.5	4	4	10.5	10.5						
	041	1.5	2.5	2.5	4	4	4.5	4.5	13	13						

1



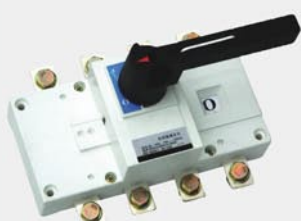
GL-160A/3



GL-160A/4

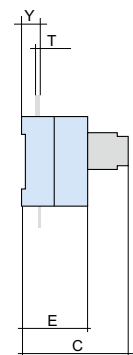
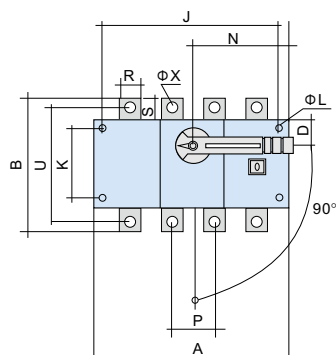


GL-250A/3

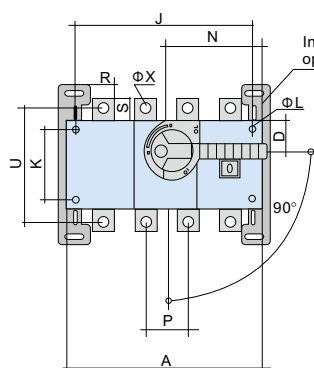


GL-250A/4

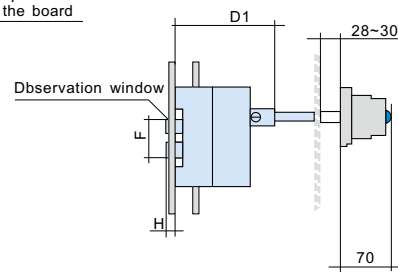
External Dimension and Installation Dimension of GL-125~250A Load-Isolation switch



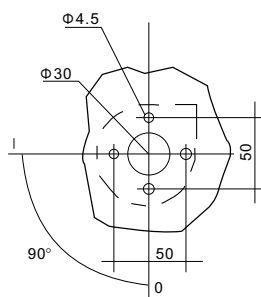
Direct operation of GL-125~250A



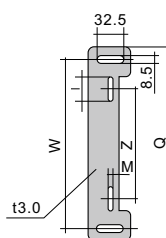
Installation bottom plate for operation outside the board



operation outside GL -125~250A/JK board



Installation size of handle seat outside board



Installation bottom plate for operation outside the board

Specification	Dimension of Bottom Board				
GL-125~250A	I	M	Z	W	Q
125A	55	5.5	85	190	218
160A	55	5.5	85	190	218
200A	55	5.5	85	190	218
250A	55	5.5	85	190	218

Specification	External Dimension and Installation Dimension																		
GL-125~250A	A	B	C	D	D1	E	ΦL	J	K	N	P	R	S	T	U	ΦX	Y	F	H
125A/3	140	135	120	27	92	73	5.5	120	65	85	36	20	25	3	115	8.5	23	49	10
125A/4	170	135	120	27	92	73	5.5	150	65	85	36	20	25	3	115	8.5	23	49	10
160A/3	140	135	120	27	92	73	5.5	120	65	85	36	20	25	3	115	8.5	23	49	10
160A/4	170	135	120	27	92	73	5.5	150	65	85	36	20	25	3	115	8.5	23	49	10
200A/3	180	170	140	35	103	86	5.5	160	90	115	50	25	30	3.2	140	10.5	25	79	15
200A/4	230	170	140	35	103	86	5.5	210	90	115	50	25	30	3.2	140	10.5	25	79	15
250A/3	180	170	140	35	103	86	5.5	160	90	115	50	25	30	3.2	140	10.5	25	79	15
250A/4	230	170	140	35	103	86	5.5	210	90	115	50	25	30	3.2	140	10.5	25	79	15

External Dimension and Installation Dimension of GL-315~630A Load-Isolation switch



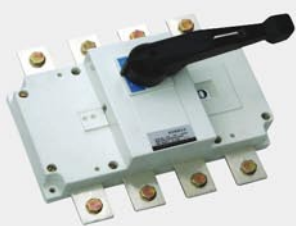
GL-400A/3



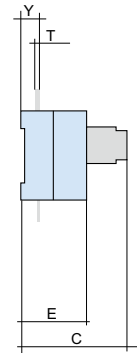
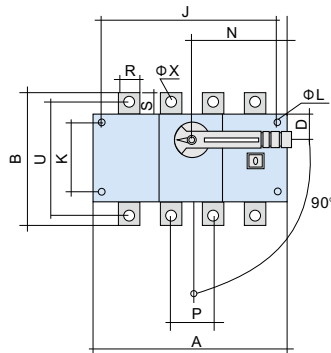
GL-400A/4



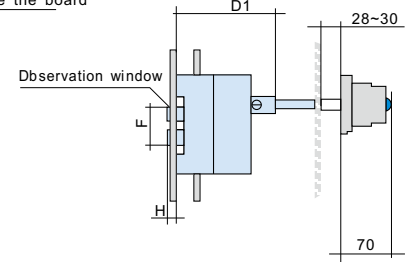
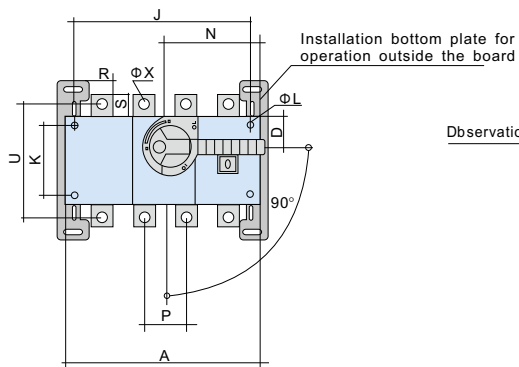
GL-630A/3



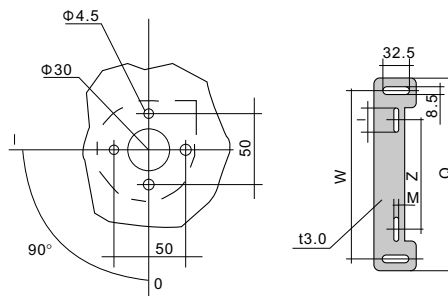
GL-630A/4



Direct operation of GL-315~630A



operation outside GL-315~630A/JK board



Installation size of handle seat outside board

Installation bottom plate for operation outside the board

Specification	Dimension of Bottom Board				
GL-315~630A	I	M	Z	W	Q
315A	60	6.5	130	240	270
400A	60	6.5	130	240	270
500A	60	6.5	130	240	270
630A	60	6.5	130	240	270

Specification	External Dimension and Installation Dimension																		
GL-315~630A	A	B	C	D	D1	E	ΦL	J	K	N	P	R	S	T	U	ΦX	Y	F	H
315A/3	230	240	140	50	138	116	7	210	140	145	65	32	40	5	206	10.5	36	94	20
315A/4	290	240	140	50	138	116	7	270	140	145	65	32	40	5	206	10.5	36	94	20
400A/3	230	240	185	50	138	116	7	210	140	145	65	32	40	5	206	10.5	36	94	20
400A/4	290	240	185	50	138	116	7	270	140	145	65	32	40	5	206	10.5	36	94	20
500A/3	230	260	185	50	138	116	7	210	140	145	65	40	50	6	220	12.5	37	94	20
500A/4	290	260	185	50	138	116	7	270	140	145	65	40	50	6	220	12.5	37	94	20
630A/3	230	260	185	50	138	116	7	210	140	145	65	40	50	6	220	12.5	37	94	20
630A/4	290	260	185	50	138	116	7	270	140	145	65	40	50	6	220	12.5	37	94	20

1

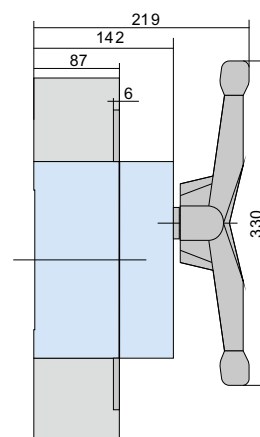
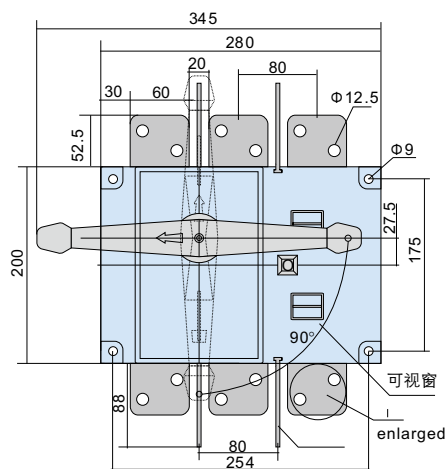


GL-800A/3

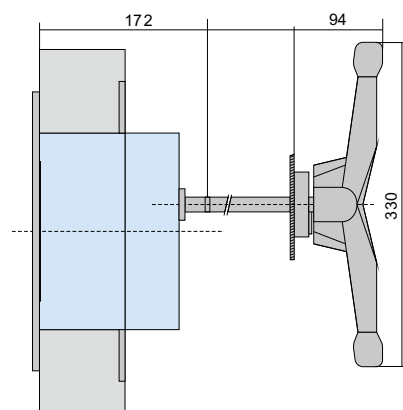
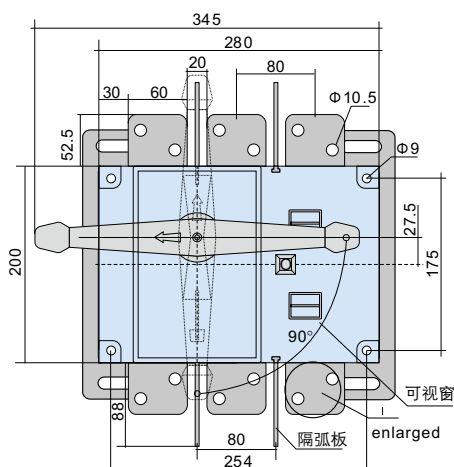


GL-1000A/3

External Dimension and Installation Dimension of GL-800~1000A Load-Isolation switch

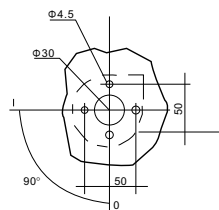
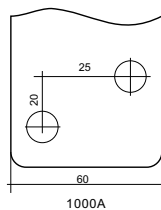
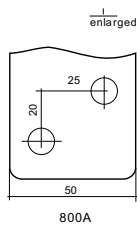


Direct operation of GL-800A

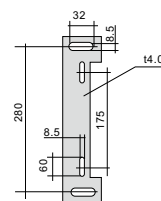


Miniature operation outside GL -1000A board

Connecting terminal



Installation size of handle seat outside board



Installation bottom plate for operation outside the board

External Dimension and Installation Dimension of GL-1000~1600A Load-Isolation switch



GL-1000A/3



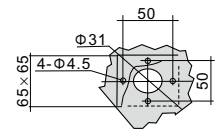
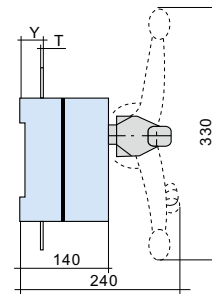
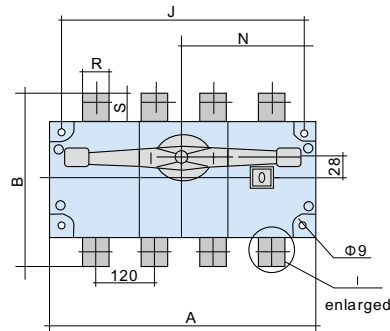
GL-1250A/3



GL-1250A/4

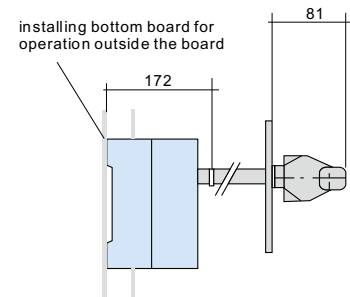
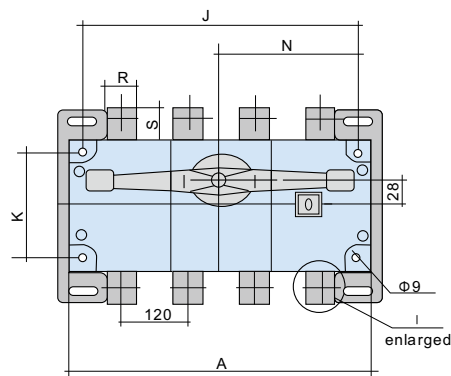


GL-1600A/3



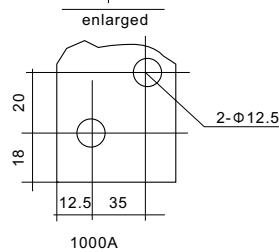
Installation size of handle seat outside board

Direct operation of GL-1000~1600A

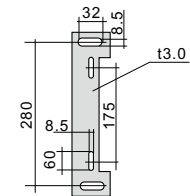
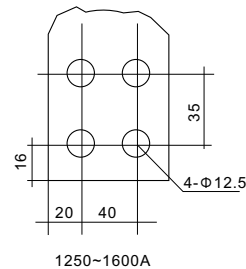


operation outside GL-1000~1600A/J board

Connecting terminal



Installation bottom board for operation outside the board



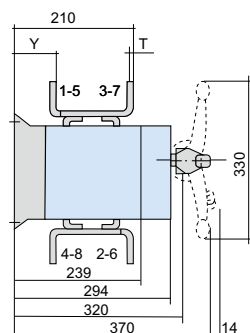
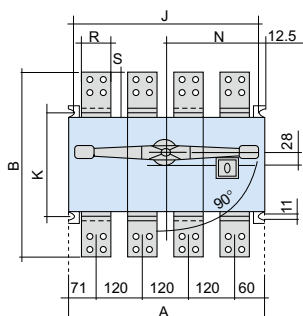
Specification	External Dimension and Installation Dimension								
GL-1000~1600A	A	B	J	K	N	R	S	T	Y
1000A/3	378	310	352	175	185	60	55	8	48
1000A/4	492	310	467	175	246	60	55	8	48
1250A/3	378	335	352	175	185	80	68	8	48
1250A/4	492	335	467	175	246	80	68	8	48
1600A/3	378	335	352	175	185	80	68	10	49
1600A/4	492	335	467	175	246	80	68	10	49

1



GL-2500A/3

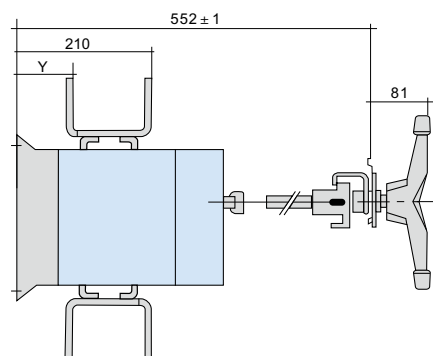
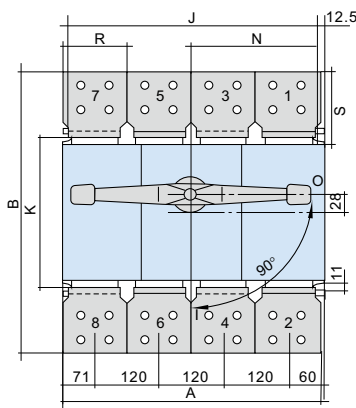
External Dimension and Installation Dimension of GL-2000~3150A Load-Isolation switch



Direct operation on front face GL-2000-2500A

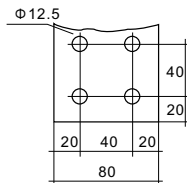
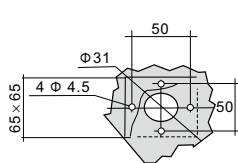


GL-3150A/3

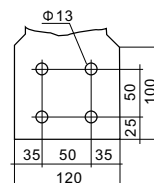


operation outside GL-3150A

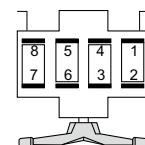
Connecting terminal



2000~2500A



3150~4000A



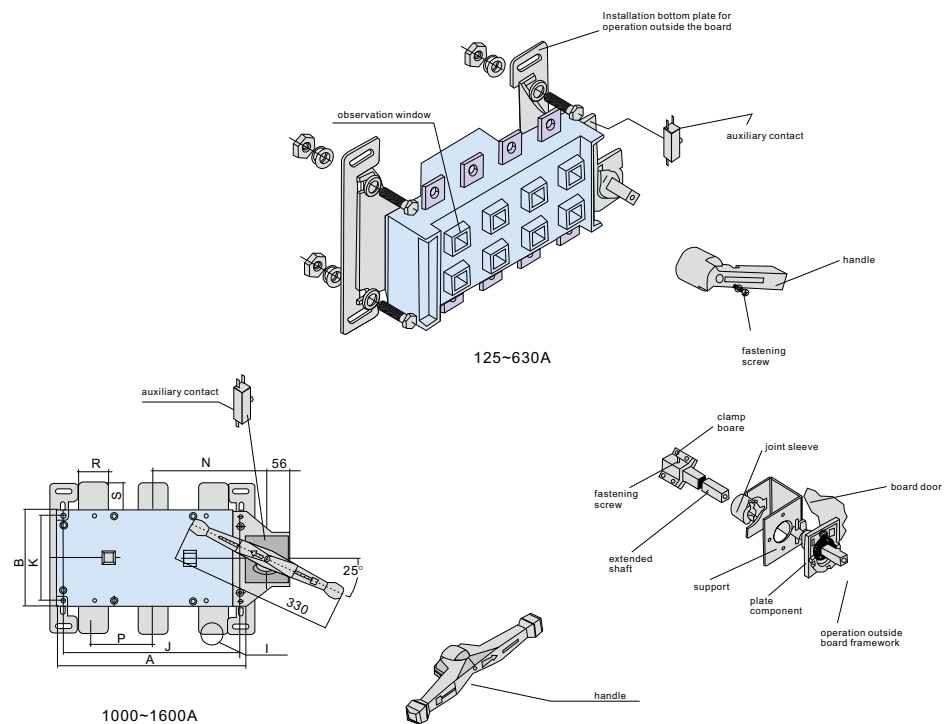
Splicing terminal
See below if upward
See above if downward
2000-4000A

operation outside

Specification	External Dimension and Installation Dimension								
GL-2000~3150A	A	B	J	K	N	R	S	T	Y
2000A/3	378	450	352	220	185	80	125	10	100.5
2000A/4	492	450	474	220	246	80	125	10	100.5
2500A/3	378	450	352	220	185	80	125	10	100.5
2500A/4	492	450	474	220	246	80	125	10	100.5
3150A/3	378	494	352	220	185	120	147	12	102.5
3150A/4	492	494	474	220	246	120	147	12	102.5

GLC, CK-125~4000A Side Operation Load-Isolation switch

- GLCK-125~4000A. The load isolation switch is suitable for the on and off of circuit or electric insulation. The products have three pole, four pole, and (three poles+on and off neutral pole).
- Products with observation windows can be provided according to the demand to observe directly the on and off state of contact.
Direct operation: handle is installed on the right side of switch.
Operation outside the board: handle is installed outside the door of distributing board.
(C means side operation, CK means side operation with visualization window)
- Two set of auxiliary contact can be assembled according to the demand.
- Extended shaft is used for the operation outside the board.
- Mechanical property and electric property correspond to the mechanical property and electric property of GL-125-4000A.



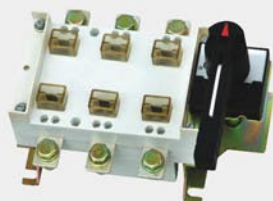
1



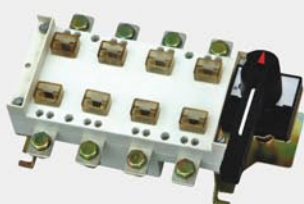
GLCK-160A-3



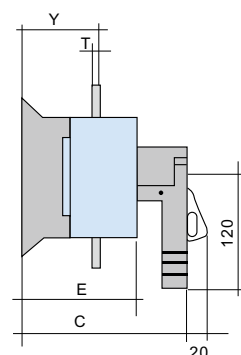
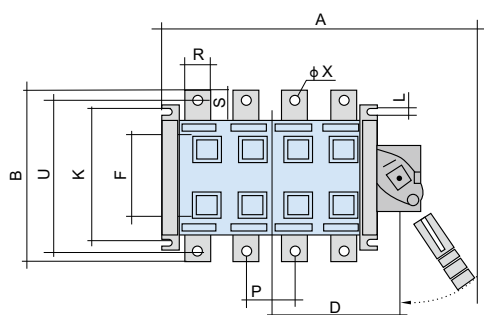
GLCK-160A-4



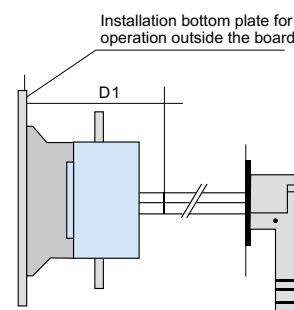
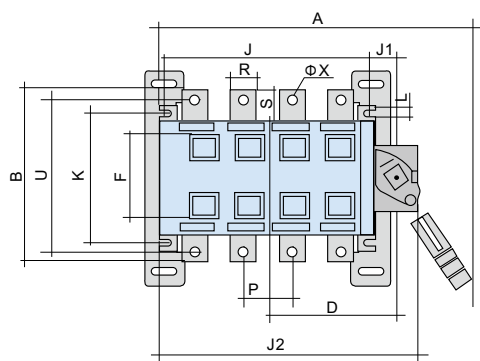
GLCK-250A-3



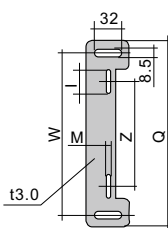
GLCK-250A-4



Direct operation of GLCK-125~250A



Operation outside GLCK-125~250A/JK board



**Installation bottom plate
for operation outside the
board**

Specification	Dimension of Bottom Board				
GLCK-125~250A	I	M	Z	W	Q
125A	55	6.5	110	216	244
160A	55	6.5	110	216	244
200A	55	6.5	110	216	244
250A	55	6.5	110	216	244

Specification	External Dimension and Installation Dimension																		
GLCK-125~250A	A	B	C	D	D1	E	J	J1	J2	K	P	R	S	T	U	ΦX	Y	L	F
125A/3	266	135	148	89	125	89	120	30	195	95	36	20	25	3	115	8.5	55	7	49
125A/4	296	135	148	104	125	89	150	30	225	95	36	20	25	3	115	8.5	55	7	49
160A/3	266	135	148	89	125	89	120	30	195	95	36	20	25	3	115	8.5	55	7	49
160A/4	296	135	148	104	125	89	150	30	225	95	36	20	25	3	115	8.5	55	7	49
200A/3	336	170	167	110	134	100	160	30	235	115	50	25	30	3.2	140	10.5	65	9	79
200A/4	384	170	167	135	134	100	210	30	285	115	50	25	30	3.2	140	10.5	65	9	79
250A/3	336	170	167	110	134	100	160	30	235	115	50	25	30	3.2	140	10.5	65	9	79
250A/4	384	170	167	135	134	100	210	30	285	115	50	25	30	3.2	140	10.5	65	9	79

External Dimension and Installation Dimension of GLC, CK-315~630A Side Operation Isolation switch



GLCK-400A-3



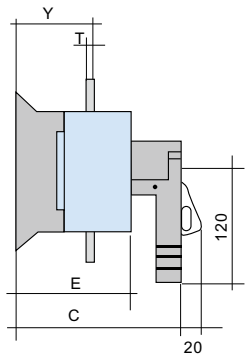
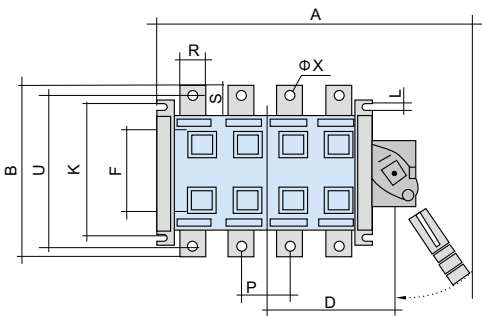
GLCK-400A-4



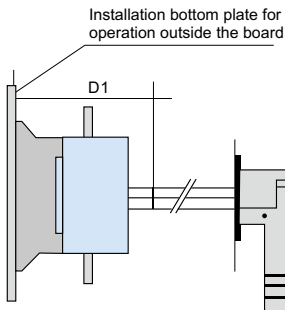
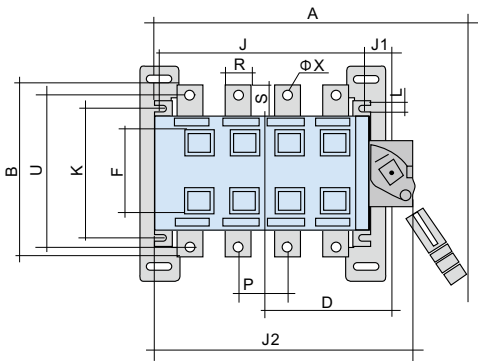
GLCK-630A-3



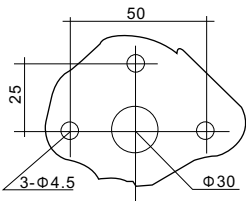
GLCK-630A-4



Direct operation of GLCK-315~630A



Operation outside GLCK-315~630A/JK board



Installation size of handle seat outside board

Specification	Dimension of Bottom Board				
GLCK-315~630A	I	M	Z	W	Q
315A	60	8.5	170	280	311
400A	60	8.5	170	280	311
500A	60	8.5	170	280	311
630A	60	8.5	170	280	311

Specification	External Dimension and Installation Dimension																
GLCK-315~630A	A	B	C	D	D1	E	J	J1	J2	K	P	R	S	T	U	ΦX	Y
315A/3	425	240	210	150	163	129	210	44.5	298	180	65	32	40	5	206	10.5	85
315A/4	480	240	210	180	163	129	270	44.5	358	180	65	32	40	5	206	10.5	85
400A/3	425	240	210	150	163	129	210	44.5	298	180	65	32	40	5	206	10.5	85
400A/4	480	240	210	180	163	129	270	44.5	358	180	65	32	40	5	206	10.5	85
500A/3	425	260	210	150	163	129	210	44.5	298	180	65	40	50	6	220	12.5	85
500A/4	480	260	210	180	163	129	270	44.5	358	180	65	40	50	6	220	12.5	85
630A/3	425	260	210	150	163	129	210	44.5	298	180	65	40	50	6	220	12.5	85
630A/4	480	260	210	180	163	129	270	44.5	358	180	65	40	50	6	220	12.5	85

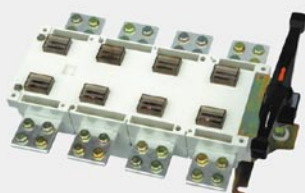
1



GLCK-1000A-3

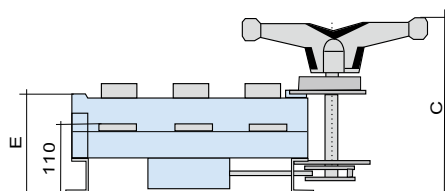
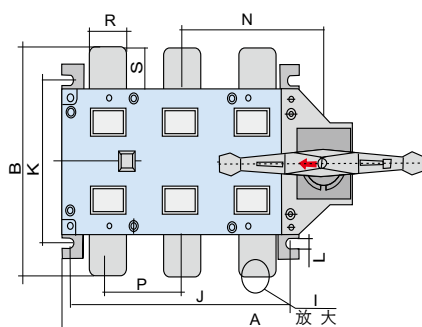


GLCK-1600A-3

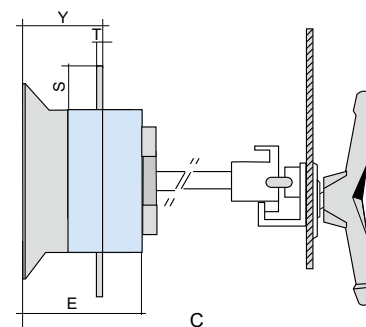
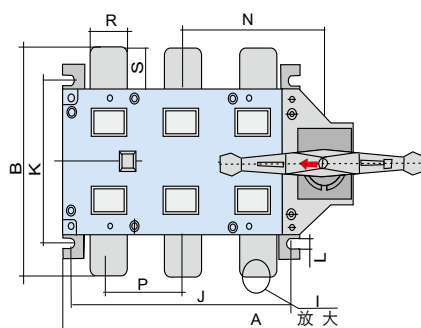


GLCK-1600A-4

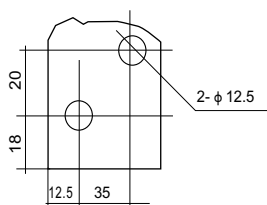
External Dimension and Installation Dimension of GLC, CK-1000~1600A Side Operation Load-Isolation switch



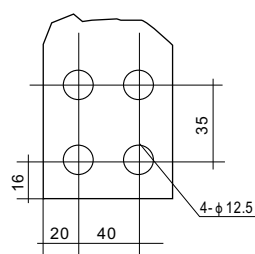
Direct operation of GLCK-1000~1600A/3J



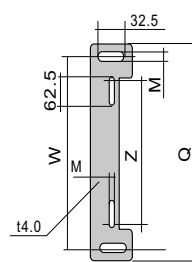
I
enlarged



1000A



1250~1600A



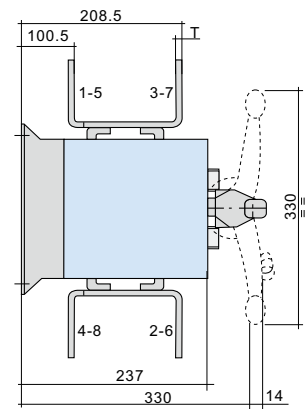
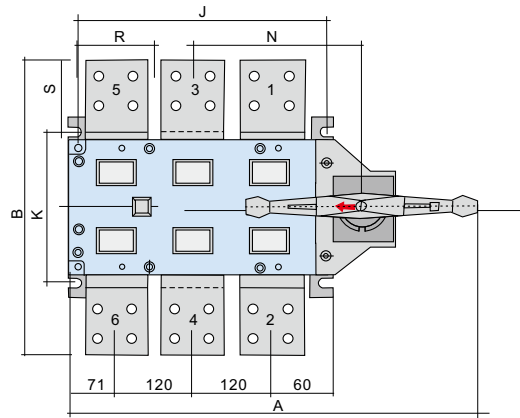
Installation bottom
plate for operation
outside the board

Specification	External Dimension and Installation Dimension														
	A	B	C	E	L	J	K	M	N	P	Q	R	S	T	Z
GLCK-1000~1600A															
1000A/3	583	310	242	150	11	352	220	8.5	232	120	311	60	55	8	224
1000A/4	698	310	242	150	11	467	220	8.5	286	120	311	60	55	8	224
1250A/3	583	335	242	150	11	352	220	8.5	232	120	311	80	68	8	224
1250A/4	698	335	242	150	11	467	220	8.5	286	120	311	80	68	8	224
1600A/3	583	335	242	150	11	352	220	8.5	232	120	311	80	68	10	244
1600A/4	698	335	242	150	11	467	220	8.5	286	120	311	80	68	10	224

External Dimension and Installation Dimension of GLC, CK-2000~4000A Side Operation Isolation switch



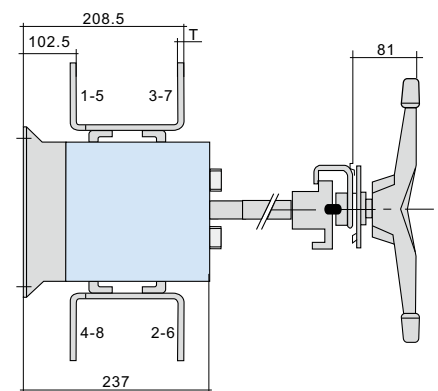
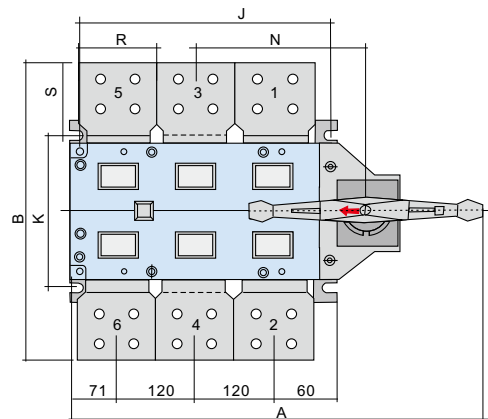
GLCK-2000A-3



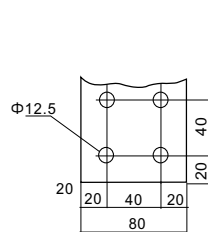
Direct operation of GLCK-2000~2500A/3J



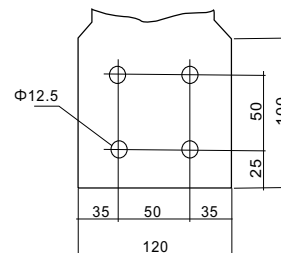
GLCK-3150A-3



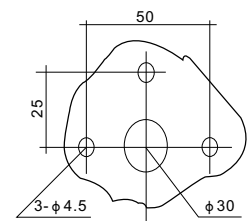
Operation outside GLCK-3150A board



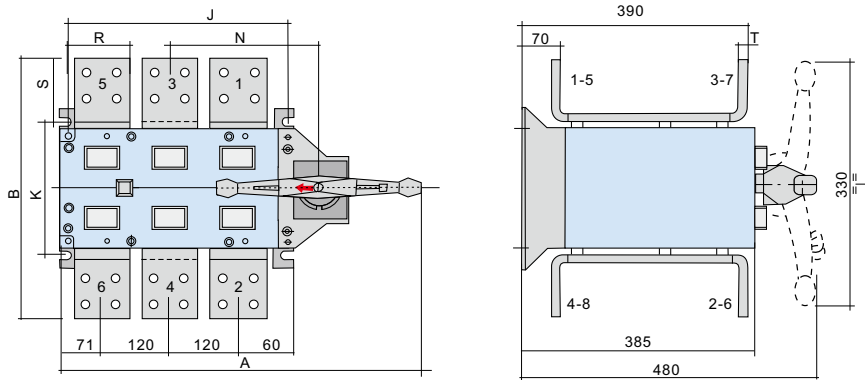
2000~2500A



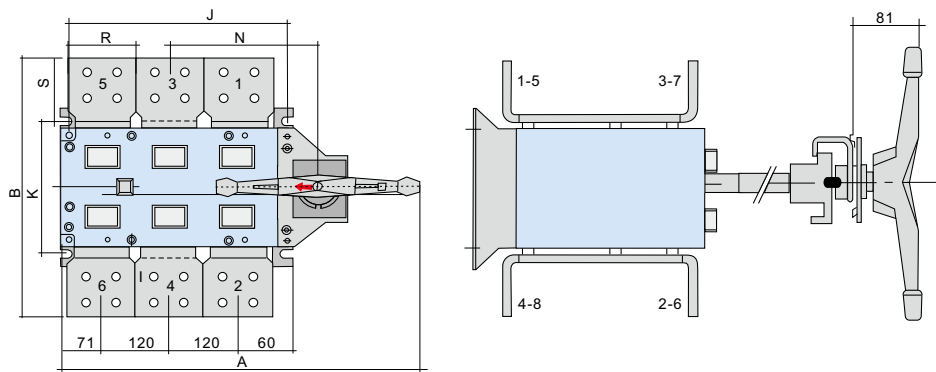
3150~4000A



Installation size of handle seat outside board



Direct operation on front face GLCK-4000A



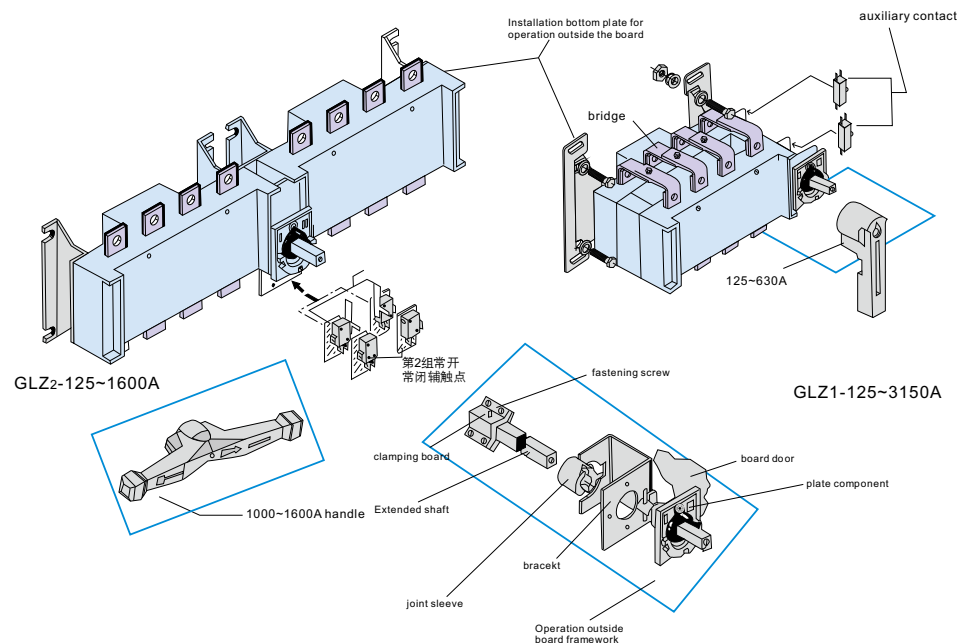
Operation outside GL CK-4000A board

Specification	External Dimension and Installation Dimension															
	A	B	C	E	L	J	K	M	N	P	Q	R	S	T	W	Z
GLCK-1000~4000A																
2000A/3	583	450	330	237	11	352	220	8.5	232	120	311	80	125	10	280	224
2000A/4	698	450	330	237	11	467	220	8.5	286	120	311	80	125	10	280	224
2500A/3	583	450	330	237	11	352	220	8.5	232	120	311	80	125	10	280	224
2500A/4	698	450	330	237	11	467	220	8.5	286	120	311	80	125	10	280	224
3150A/3	583	494	330	237	11	352	220	8.5	232	120	311	120	147	12	280	244
3150A/4	698	494	330	237	11	467	220	8.5	286	120	311	120	147	12	280	224
4000A/3	583	500	480	385	11	352	220	8.5	232	120	311	120	150	15	280	224
4000A/4	698	500	480	385	11	467	220	8.5	286	120	311	120	150	15	280	224

GLZ1-80~3150A transfer Load-Isolation switch

- GLZ-80~3150A. The load isolation switch is suitable for the changeover of two sets of low voltage electric circuit or the changeover of 2 sets of on-load devices or safety insulation.
- Mode of operation:
Direct operation: handle is installed on the switch.
Operation outside the board: handle is installed outside the door of power distributing board.
- Products with observation windows can be provided according to the demand to observe directly the on and off state of contact.
- The products have three poles, four poles, and (three poles+on and off neural pole).
- Extended shaft is used for the operation outside the board.
- Two sets of auxiliary contacts can be assembled according to the demand.
- Mechanical property and electric property correspond to the mechanical property and electric property of GL-80~3150A.
- A bridge can provided to connect the inlet or outlet terminal of the switch.

Note: The bridge connection is chosen, an explanation is needed to indicate the inlet or outlet is connected with it.



1

GLZ1-100A-4

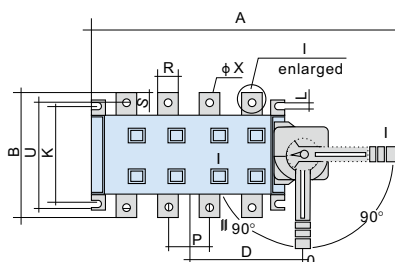
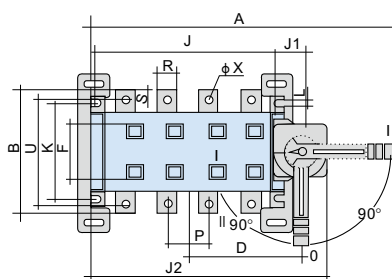
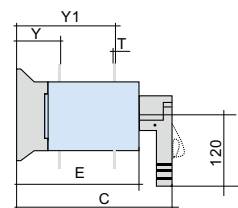
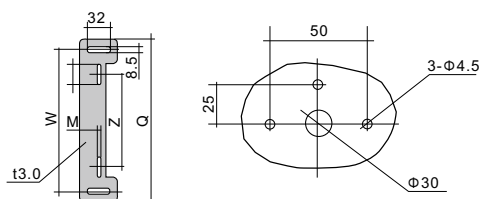
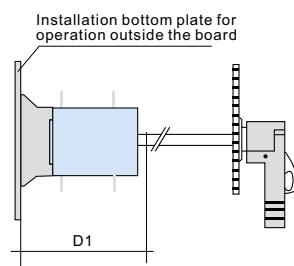
GLZ1-160A-4

GLZ1-250A-4

GLZ1-400A-3

GLZ1-630A-4

External Dimension and Installation Dimension of GLZ1-100~630A transfer Load-Isolation switch


Direct operation of GLZ1-80~630A

Operation outside GLZ1K-80~630A board

Installation size of handle seat outside board

Specification	Dimension of Bottom Board				
GL Z1-125~1600A	I	M	Z	W	Q
125A	55	6.5	95	216	244
160A	55	6.5	95	216	244
200A	55	6.5	116	216	244
250A	55	6.5	116	216	244
315-400A	60	8.5	180	280	311
500-630A	60	8.5	180	280	311
1000-1600A	60	8.5	180	280	311

Specification	External Dimension and Installation Dimension																			
GLZ1-80~630A	A	B	C	D	D1	E	J	J1	J2	K	L	P	R	S	T	U	ΦX	Y	Y1	F
80A-100A/4	277	106	166	98	143	106	115	40	195	84	7	30	14	18	2.5	91	6	39	90.5	
125A-160A/3	274	135	215	89	190	154	120	30	195	95	7	36	20	25	3	115	8.5	55	121	49
125A-160A/4	304	135	215	104	190	154	150	30	225	95	7	36	20	25	3	115	8.5	55	121	49
200A-250A/3	347	170	250	110	218	180	160	30	235	115	9	50	25	30	3.2	140	10.5	65	146	76
200A-250A/4	396	170	250	135	218	180	210	30	285	115	9	50	25	30	3.2	140	10.5	65	146	76
315A-400A/3	432	240	325	150	278	241	211	44.5	298	180	10	65	32	40	5	206	10.5	85	197.5	94
315A-400A/4	492	240	325	180	278	241	270	44.5	358	180	10	65	32	40	5	206	10.5	85	197.5	94
500A-630A/3	432	260	325	150	278	241	211	44.5	298	180	10	65	40	50	6	220	12.5	85	198	94
500A-630A/4	492	260	325	180	278	241	270	44.5	358	180	10	65	40	50	6	220	12.5	85	198	94

External Dimension and Installation Dimension of GL, GLZ1-1000~1600A transfer Load-Isolation switch



GLZ1-1000A-4



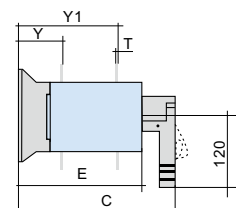
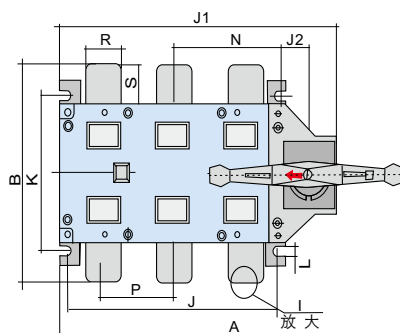
GLZ1-1250A-3



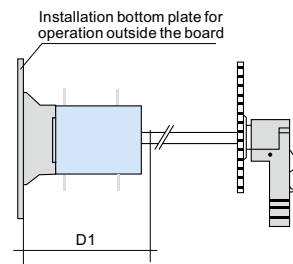
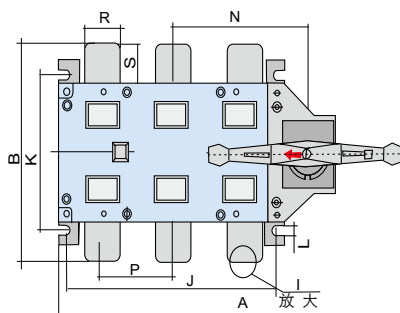
GLZ1-1600A-3



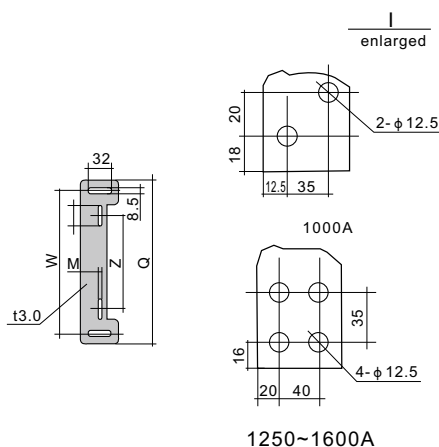
GLZ1-1600A-4



Direct operation of GLZ1-125~1600A



Operation outside GLZ1K-125~1600A board



Specification	Dimension of Bottom Board				
GL Z1-125~1600A	I	M	Z	W	Q
125A	55	6.5	95	216	244
160A	55	6.5	95	216	244
200A	55	6.5	116	216	244
250A	55	6.5	116	216	244
315-400A	60	8.5	180	280	311
500-630A	60	8.5	180	280	311
1000-1600A	60	8.5	180	280	311

Specification	External Dimension and Installation Dimension														
GLZ1-1000~1600A	A	B	C			E	J	J1	J2	K	P	R	S	T	ΦX
1000A/3	583	310	390			296	352	53	450	220	120	60	55	8	12.5
1000A/4	698	310	390			296	467	53	565	220	120	60	55	8	12.5
1250A/3	583	335	390			296	352	53	450	220	120	80	68	8	12.5
1250A/4	698	335	390			296	467	53	565	220	120	80	68	8	12.5
1600A/3	583	335	390			296	352	53	450	220	120	80	68	10	12.5
1600A/4	698	335	390			296	467	53	565	220	120	80	68	10	12.5

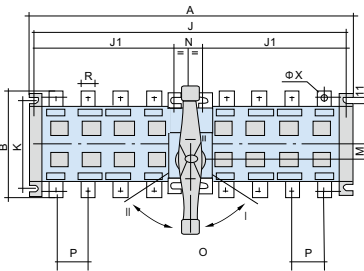
External Dimension and Installation Dimension of GLZ2-80~1600A transfer Load Isolation switch



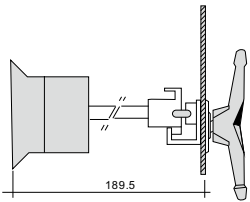
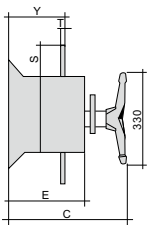
GLZ2-100A-4



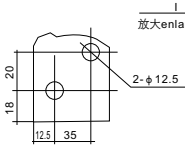
GLZ2-630A-4



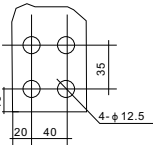
Direct operation on front face GLZ2-125~1600A



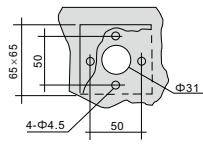
Operation outside GLZ2-125~1600A



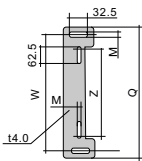
1000A



1250~1600A



Installation size of handle seat outside board

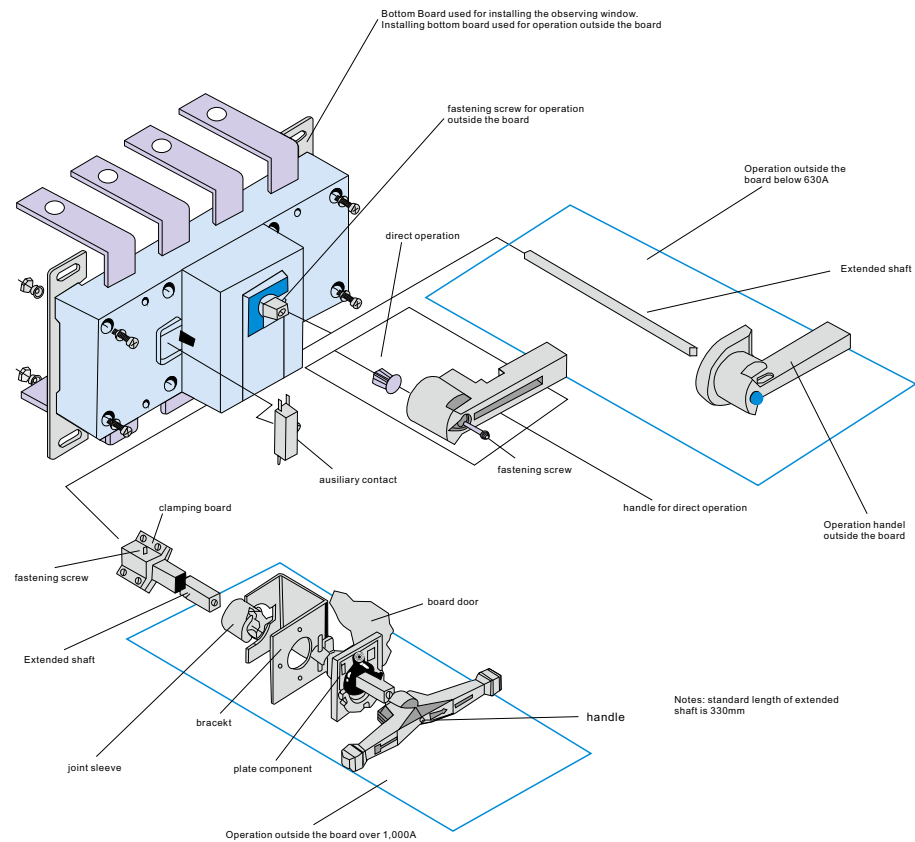


Installation bottom plate for operation outside the board

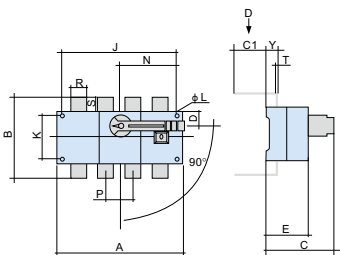
Specification	External Dimension and Installation Dimension																
GLZ2-80~1600A	A	B	C	E	Y	J	J1	K	M	N	P	Q	R	S	T	W	Z
80A-100A/4	165	125	102	53	37		54	60			27		14	20	2		
125-160A/3	320	135	148	89	55	302	120	95	6.5	59	36	218	20	25	3	190	90
125-160A/4	378	135	148	89	55	359	150	95	6.5	59	36	218	20	25	3	190	90
200-250A/3	400	170	167	100	65	380	160	115	6.5	65	50	218	25	30	3.2	190	90
200-250A/4	498	170	167	100	65	480	210	115	6.5	65	50	218	25	30	3.2	190	90
315-400A/3	530	240	213	129	85	515	210	180	8.5	90	65	270	32	40	5	240	130
315-400A/4	650	240	213	129	85	515	270	180	8.5	90	65	270	32	40	5	240	130
500-630A/3	530	260	213	129	85	515	210	180	8.5	90	65	270	40	50	6	240	130
500-630A/4	650	260	213	129	85	515	270	180	8.5	90	65	270	40	50	6	240	130
1000A/3	835	310	242	145	110	811	352	220	8.5	105	120	311	60	55	8	280	180
1000A/4	1064	310	242	145	110	1045	467	220	8.5	105	120	311	60	55	8	280	180
1250A/3	835	335	242	145	110	811	352	220	8.5	105	120	311	80	68	8	280	180
1250A/4	1064	335	242	145	110	1045	467	220	8.5	105	120	311	80	68	8	280	180
1600A/3	835	335	242	145	111	811	352	220	8.5	105	120	311	80	68	10	280	180
1600A/4	1064	335	242	145	111	1045	467	220	8.5	105	120	311	80	68	10	280	180

Connection Load-Isolation switch Behind GLB-125~1600A Board

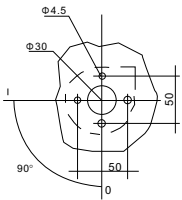
- 125~630A is suitable for the on and off of electric circuit or electric insulation. Over 1,000A is only suitable for electric insulation.
- 125~630A was three poles, and four pole (three pole+onoff neutral pole).
- Products below 630A with observation window can be provided according to the demand to observe the on and off state of contact.
- Two sets of auxiliary contacts is assembled according to demand.
- Mechanical property and electric property correspond to the mechanical property and electric property of GL-125~1600A.



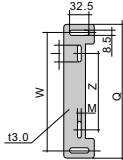
External Dimension and Installation Dimension of GLB-125~630A Load-Isolation switch Wired at the Back



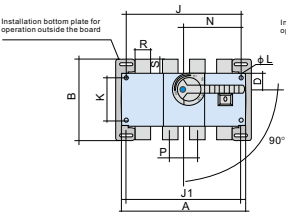
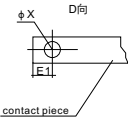
direct operation of GL B-125~630A



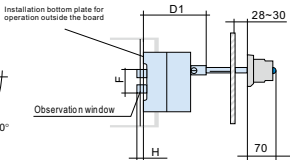
Installation size of handle
seat outside board



Installation bottom plate for
operation outside the board



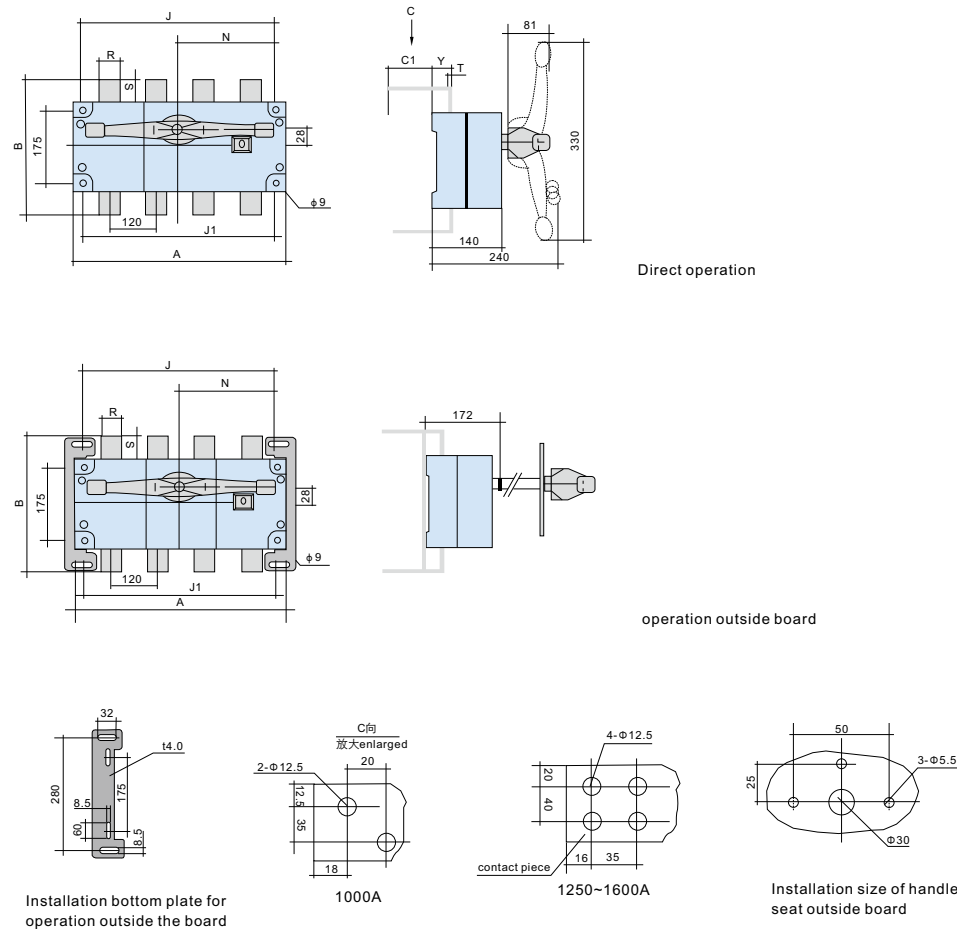
Operation outside the GL B-125~630A/JK board



Specification	Dimension of Bottom Board				
	I	M	Z	W	Q
GL B-125~630A					
125A	55	5.5	85	190	218
160A	55	5.5	85	190	218
200A	55	5.5	85	190	218
250A	55	5.5	85	190	218
315A	60	6.5	130	240	270
400A	60	6.5	130	240	270
500A	60	6.5	130	240	270
630A	60	6.5	130	240	270

Specification	External Dimension and Installation Dimension																				
GL B-125~630A	A	B	C	C1	D	D1	E	E1	ΦL	J	J1	K	N	P	R	S	T	ΦX	Y	F	H
125A/3	140	135	120	70	27	92	73	10	5.5	120	120	65	85	36	20	25	3	8.5	23	49	10
125A/4	170	135	120	70	27	92	73	10	5.5	150	150	65	85	36	20	25	3	8.5	23	49	10
160A/3	140	135	120	70	27	92	73	10	5.5	120	120	65	85	36	20	25	3	8.5	23	49	10
160A/4	170	135	120	70	27	92	73	10	5.5	150	150	65	85	36	20	25	3	8.5	23	49	10
200A/3	180	170	140	75	35	103	86	15	5.5	160	160	90	115	50	25	30	3.2	10.5	25	79	15
200A/4	230	170	140	75	35	103	86	15	5.5	210	210	90	115	50	25	30	3.2	10.5	25	79	15
250A/3	180	170	140	75	35	103	86	15	5.5	160	160	90	115	50	25	30	3.2	10.5	25	79	15
250A/4	230	170	140	75	35	103	86	15	5.5	210	210	90	115	50	25	30	3.2	10.5	25	79	15
315A/3	230	240	185	80	50	138	116	17	7	210	210	140	145	65	32	40	5	10.5	36	94	20
315A/4	290	240	185	80	50	138	116	17	7	270	270	140	145	65	32	40	5	10.5	36	94	20
400A/3	230	240	185	80	50	138	116	17	7	210	210	140	145	65	32	40	5	10.5	36	94	20
400A/4	290	240	185	80	50	138	116	17	7	270	270	140	145	65	32	40	5	10.5	36	94	20
500A/3	230	260	185	85	50	138	116	20	7	210	210	140	145	65	40	50	6	12.5	37	94	20
500A/4	290	260	185	85	50	138	116	20	7	270	270	140	145	65	40	50	6	12.5	37	94	20
630A/3	230	260	185	85	50	138	116	20	7	210	210	140	145	65	40	50	6	12.5	37	94	20
630A/4	290	260	185	85	50	138	116	20	7	270	270	140	145	65	40	50	6	12.5	37	94	20

External Dimension and Installation Dimension of GLB-1000~1600A Load-Isolation switch Wired at the Back

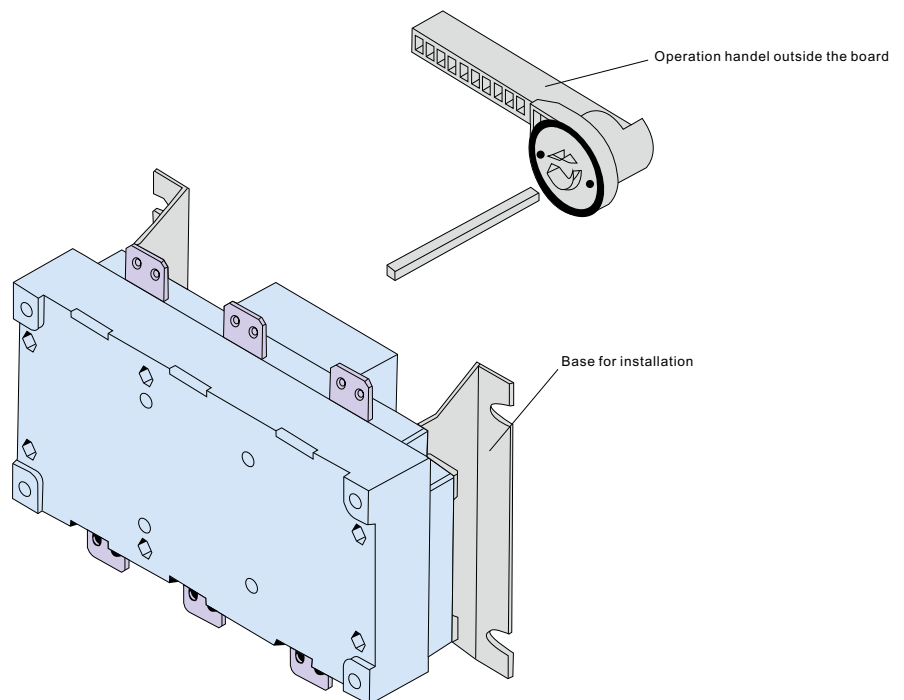


Specification	External Dimension and Installation Dimension									
GL B-1000~1600A	A	B	C1	J	J1	N	R	S	T	Y
1000A/3	378	344	100	352	352	185	60	55	8	48
1000A/4	492	344	100	467	467	248	60	55	8	48
1250A/3	378	344	100	352	352	185	80	68	8	48
1250A/4	492	344	100	467	467	248	80	68	8	48
1600A/3	378	348	100	352	352	185	80	68	10	49
1600A/4	492	348	100	467	467	248	80	68	10	49

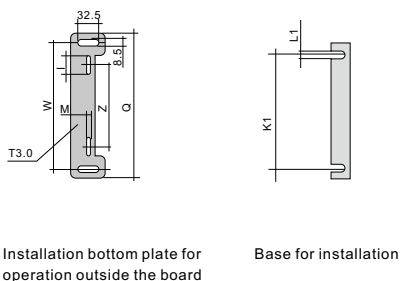
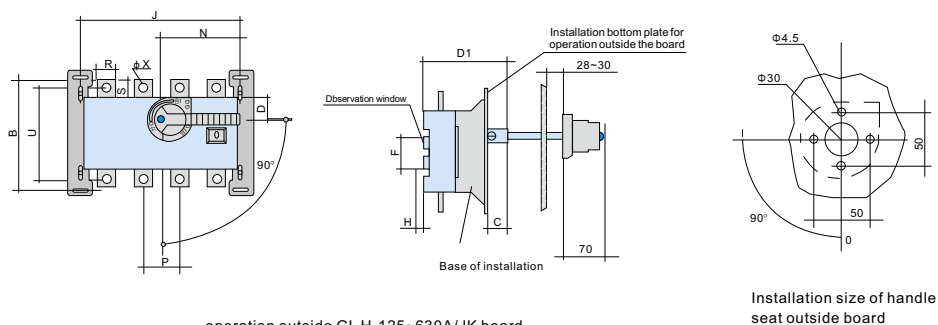
Operation -Isolation switch Behind the GLH-125~1600A Board

- 125~630A is suitable for the on and off of electric circuit or electric insulation. Those over 1,000A are only suitable for electric insulation.
- 125~630A possesses three poles, and four pole (three pole+onoff neutral pole).
- Observation window can be provided for products below 630A can be provided according to the demand to observe directly the on and off state of the contact.
- Two set of auxiliary contacts can be assembled according to demand.
- Mechanical property and electric property correspond to the mechanical property and electric property of GL-125~1600A.

Nots: only offer products for operation outside board.



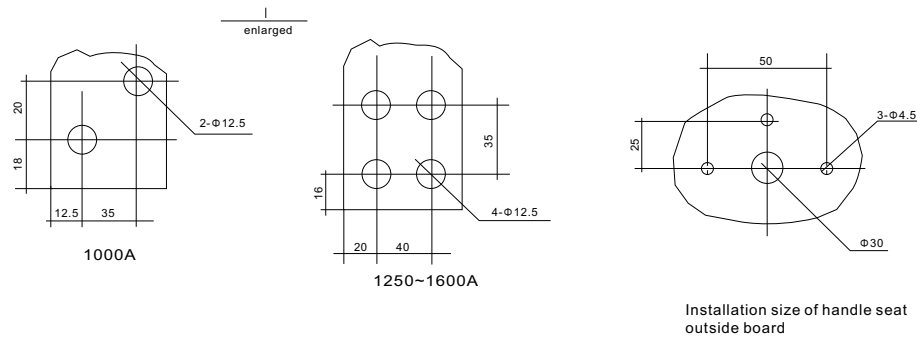
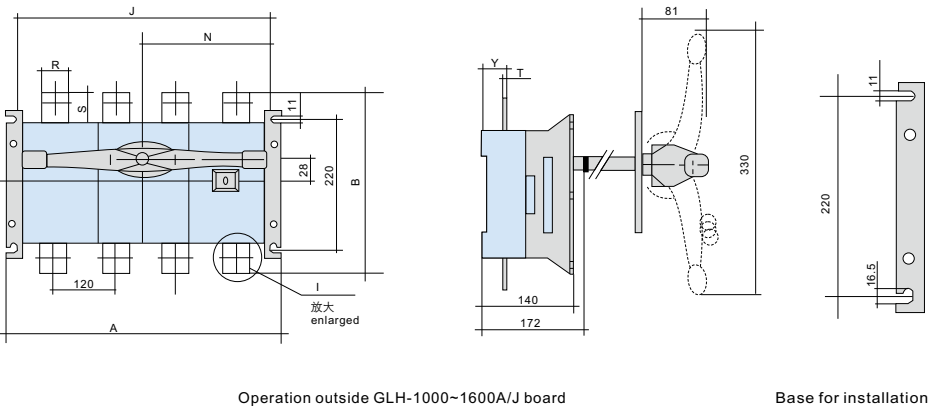
External Dimension and Installed Dimension of Operation Load-Isolation switch Behind the GLH-125~630A Board



Specification	Dimension of Bottom Board						
GLH-125~630A	I	M	Z	W	Q	K1	L1
125A	55	6.5	110	216	244	95	7
160A	55	6.5	110	216	244	95	7
200A	55	6.5	110	216	244	116	9
250A	55	6.5	110	216	244	116	9
315A	60	8.5	170	280	311	180	11
400A	60	8.5	170	280	311	180	11
500A	60	8.5	170	280	311	180	11
630A	60	8.5	170	280	311	180	11

Specification	External Dimension and Installation Dimension												
GLH-125~630A	B	C	D	D1	J	N	P	R	S	U	ΦX	F	H
125A/3	135	17	27	92	120	85	36	20	25	115	8.5	49	10
125A/4	135	17	27	92	150	85	36	20	25	115	8.5	49	10
160A/3	135	17	27	92	120	85	36	20	25	115	8.5	49	10
160A/4	135	17	27	92	150	85	36	20	25	115	8.5	49	10
200A/3	170	18	35	103	160	115	50	25	30	140	10.5	79	15
200A/4	170	18	35	103	210	115	50	25	30	140	10.5	79	15
250A/3	170	18	35	103	160	115	50	25	30	140	10.5	79	15
250A/4	170	18	35	103	210	115	50	25	30	140	10.5	79	15
315A/3	240	20	50	138	210	145	65	32	40	206	10.5	94	20
315A/4	240	20	50	138	270	145	65	32	40	206	10.5	94	20
400A/3	240	20	50	138	210	145	65	32	40	206	10.5	94	20
400A/4	240	20	50	138	270	145	65	32	40	206	10.5	94	20
500A/3	260	20	50	138	210	145	65	40	50	220	12.5	94	20
500A/4	260	20	50	138	270	145	65	40	50	220	12.5	94	20
630A/3	260	20	50	138	210	145	65	40	50	220	12.5	94	20
630A/4	260	20	50	138	270	145	65	40	50	220	12.5	94	20

External Dimension and Installed Dimension of Operation Load-Isolation switch Behind the GLH-1000~1600A Board



Specification	External Dimension and Installation Dimension							
GL H-1000~1600A	A	B	J	N	R	S	T	Y
1000A/3	378	310	352	185	60	55	8	48
1000A/4	492	310	467	246	60	55	8	48
1250A/3	378	335	352	185	80	68	8	48
1250A/4	492	335	467	246	80	68	8	48
1600A/3	378	335	352	185	80	68	10	49
1600A/4	492	335	467	246	80	68	10	49

GLR series fuse group of isolation switch

GLR(GLLR, HGLR)Series fuse group of isolation switch (hereinafter short for switch) is multi-pole and manual operation switch, whose housing is made of glass fiber reinforced unsaturation polyester, it has merits of high dielectric property, guard capacity and reliable operation.

The operation mechanism, it is accelerate mechanism of spring energy storage, instantaneous release, it is also a mechanism that is instantaneous making and breaking multi-breakpoint contact. It is no related with the speed of operation handle, thus, it extremely improves each electric performance and mechanical performance.

Fuse group of isolation switch can makes sure making and breaking circuit with load, and it has reliable over current or shortcircuit breaking protection.

Obviously saw the breaking state.

With strong hot and humidity proofing.

Because the switch owns the merits of graceful appearance, novel, simple, small volume and complete function, it is best selection among the same products.

The products are in conformity with GB/T14048.3-2008 Low-voltage switchgear and controlgear-Part 3: Switches disconnectors switch-disconnectors and fuse-combination units.

Model description

GLR □A / □ □ C J □ B □
1 2 3 4 5 6 7 8 9

1. Code of fuse group of isolation switch
2. Rated current
3. Pole No. 2 poles 3 poles 4 poles (3 poles + switching neutral pole)
4. Rated current of fuse link A
5. Side face operation, don't note if operated on front side.
6. Operate outside of cabinet, the standard added long shaft 330m. If need the special length, please note after J, don't note if operated in the cabinet.
7. Auxiliary contact: (see note)
8. Connected wire back of plate, don't note if connected wire front of plate
9. Style: I module style (1 60~400A-1250A); II Integration style (400~630A)

Note: Don't note if the function in the box is not necessary.

F-NC or NO auxiliary contact,

S-NO+ NC S type auxiliary contact,

U- U type auxiliary contact.

Example for lectotype : rated current 160A, 3 poles, side face operation in the cabinet

Conventional heating current	32	63	160	250	400	630	1250
Dim. of fuse link		00C	00或0	1	2	3	4
Function of fuse link 600V AC(V) (W)	7.5	7.5	9.6	18.3	26	40.3	90
Rated insulation voltage Ui(V) (Installation sort IV)	690	690	690	690	690	690	
Dielectric strength							
Rated impacton withstand voltage Uimp KV (Installation sort IV)	8	8	8	8	8	12	12
Rated working current Ie(A)							
380V AC22 Cos φ =0.65	32	63	160	250	400	630	1250
AC23 Cos φ =0.35	32	63	160	250	400	630	100
Power of motor (kw)	15	30	80	132	220	355	560

Rated conditional short-circuit current (KA Rms) 380V	100	100	100	100	100	100	100
Rated making capacity I _{cn} (A Rms) AC23 400V	320	630	1600	2500	400	6300	12500
Rated breaking capacity I _{cm} (A Rms) AC22B 400V	256	504	1280	2000	3200	5000	10000
Mechanical life (rotation operation time)	1700	1700	1400	800	800	800	500
Electrical life (rotation operation time)	300	300	200	200	200	200	100
Operating moment (Nm) Front operation		15	10	12	15	42	42
Weight (Kg)	3 poles	1	1.8	3.2	4.8	16	28
	4 poles	1.3	2.3	4.5	6.1	19	33

It makes sure making and breaking circuit with load, with reliable over-current and short-circuit breaking protection, also obviously saw the breaking state. Own two poles, three poles, four poles (three poles+ switch neutral pole). The fuser can be divided into 23 specs from 63A to 1250A.

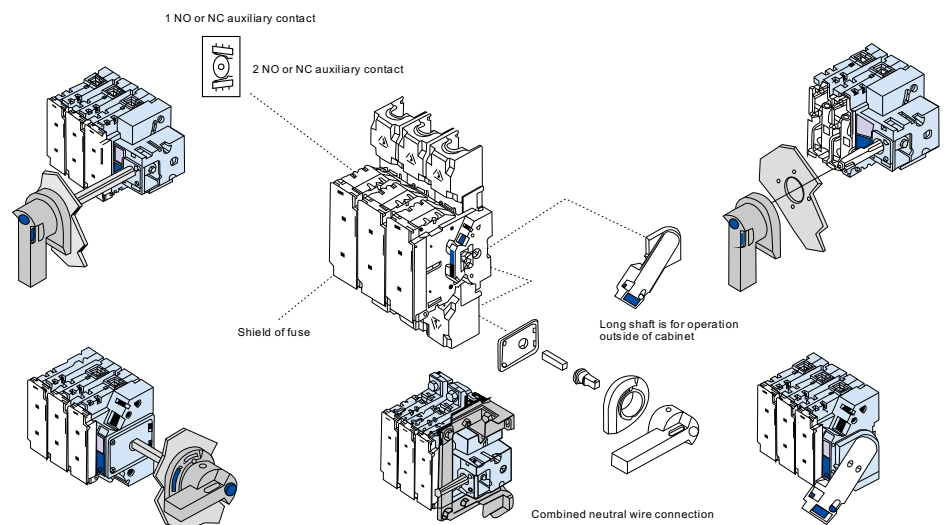
Structure and operation mode

Direct operation on front face: the handle is installed on the front face of switch.

Direct operation on side face: the handle is installed on the right of switch (it is noted separately if the handle is installed on the left of switch).

Front face operation outside of cabinet: the handle is installed on the front face outside of the distribution cabinet door.

Side face operation outside of cabinet: the handle is installed on the right of distribution cabinet outside. (it is noted separately if the handle is installed on the left)



1

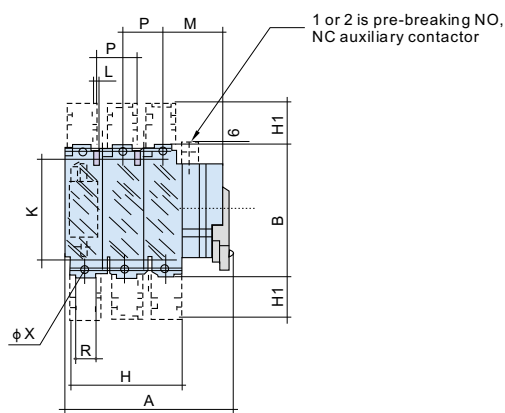
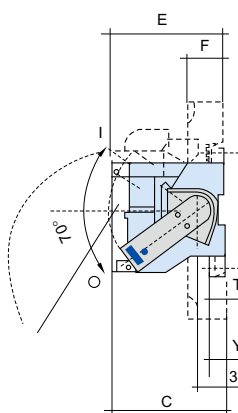
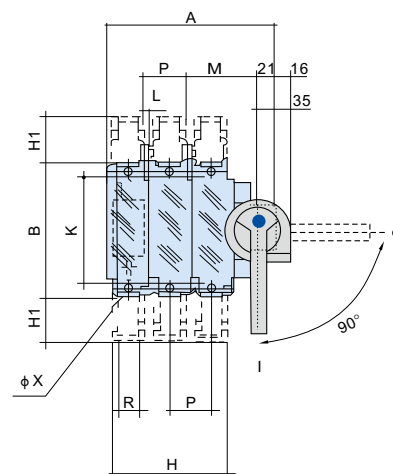
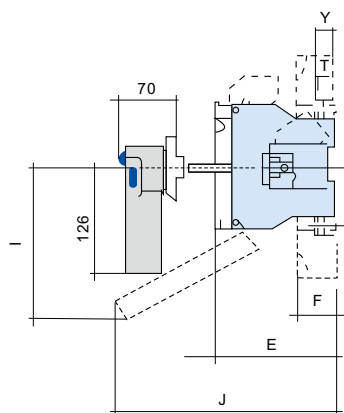
GLRC-63A-3

GLRC-63A-4

GLR-160A-3

GLR-160A-4

Outline and installation size of GLR-63~400A/I fuse group of isolation switch


GLR 63~250A side face operation

GLR 63~400A Front face operation outside of cabinet

Specification	Size of fuse	External Dimension and Installation Dimension																
		A	B	D	E	F	H	H1	I	J	K	L	M	P	R	T	ϕX	Y
GLR-63~400A																		
63A/3	0~00C	152	118	20~30	117				159	145	106	5	62.5	32				
63A/4	0~00C	184	118	20~30	117				159	145	106	5	62.5	32				
160/3	0~00	164	162	28~30	126	44	108	53	141	189	127	5.4	67	36	20	2.5	8.5	19.5
160/4	0~00	200	162	28~30	126	44	144	53	141	189	127	5.4	67	36	20	2.5	8.5	19.5
250/3	1	236	195	28~30	146	65	180	75	185	251	162	6.2	90.5	60	32	2.5	11	19.5
250/4	1	296	195	28~30	146	65	240	75	185	251	162	6.2	90.5	60	32	2.5	11	19.5
400/3	2	278	205	28~30	149	65	192	75	200	260	172	7	121	66	50	3	11	20
400/4	2	344	205	28~30	149	65	258	75	200	260	172	7	121	66	50	3	11	20



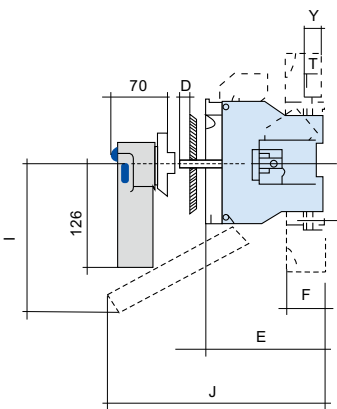
GLR-250A-3



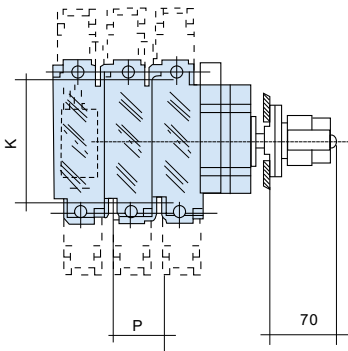
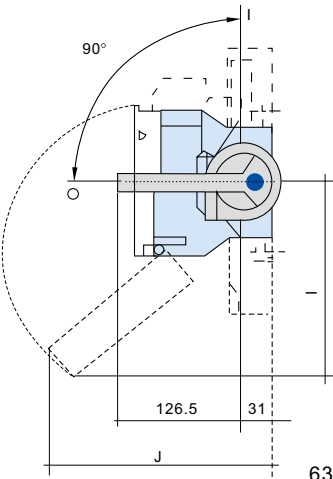
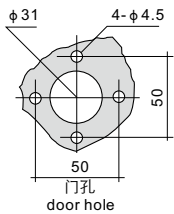
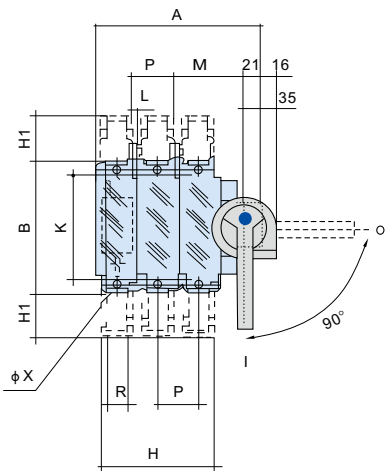
GLR-250A-4



GLR-400A-3

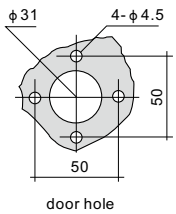


GLR 63~400A Front face operation outside of cabinet



63~400A side face operation outside of cabinet

No connection rod prolong

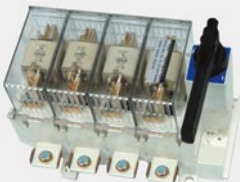


Specification	Size of fuse	External Dimension and Installation Dimension																
GLR-63~400A		A	B	C	E	F	H	H1	I	J	K	L	M	P	R	T	φX	Y
63A/3	0~00C	133	118	134	126.5		116.5		159	145	106	5	36	32				
63A/4	0~00C	164	118	117	126.5		116.5		159	145	106	5	36	32				
160/3	0~00	150	162	173	126.5	44	108	53	141	189	127	5.4	38	36	20	2.5	8.5	19.5
160/4	0~00	186	162	173	126.5	44	144	53	141	189	127	5.4	38	36	20	2.5	8.5	19.5
250/3	1	253	195	173	146	65	180	75	185	251	162	6.2	81	60	32	2.5	11	19.5
250/4	1	313	195	173	146	65	240	75	185	251	162	6.2	81	60	32	2.5	11	19.5
400/3	2	271	205	173	149	65	192	75	200	260	172	7	86	66	50	3	11	20
400/4	2	337	205	173	149	65	250	75	200	260	172	7	86	66	50	3	11	20

1

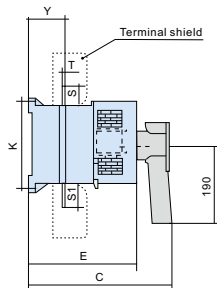
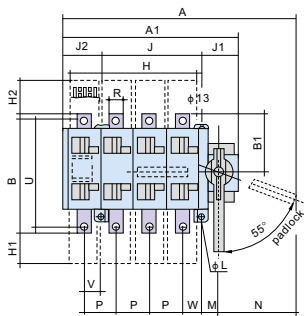
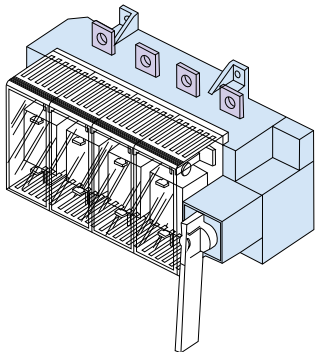
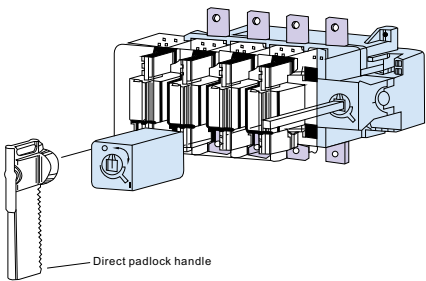


GLR-630A-3

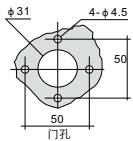
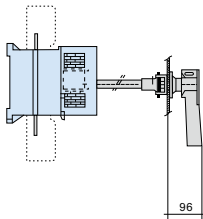


GLR-630A-4

Outline and installation size of GLR-630A/I fuse group of isolation switch



Direct operation on front face GLR 630A



Operation outside GLR 630A

Specification	Size of fuse	External Dimension and Installation Dimension																									
GLR-400-630A		A	A1	B	B1	C	E	H	H1	H2	J	J2	J1	K	M	N	P	R	S	S1	T	V	U	W	φL	Y	
630A/3	3	470	345	300	150	348	268	235	85	85	250		76	250	38.5	162	80	50	50	50	7	45.5	260	44.5	7	74	
630A/4	3	550	425	300	150	348	268	315	85	85	250	100	76	250	38.5	162	80	50	50	50	7	34.5	260	44.5	7	74	

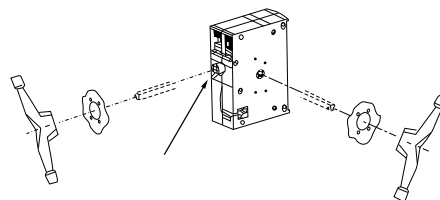
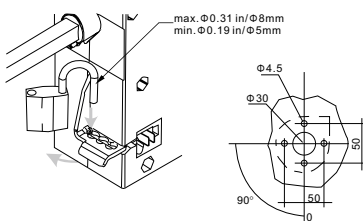
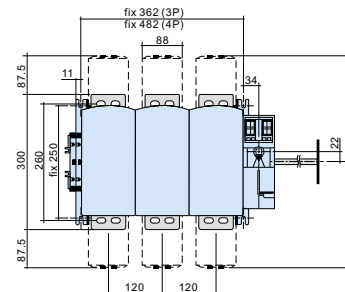
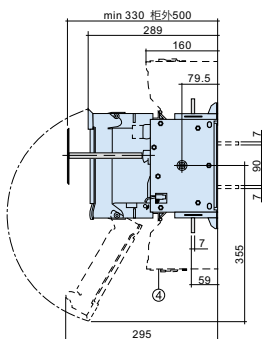
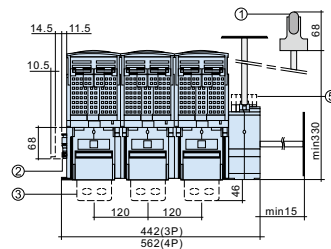
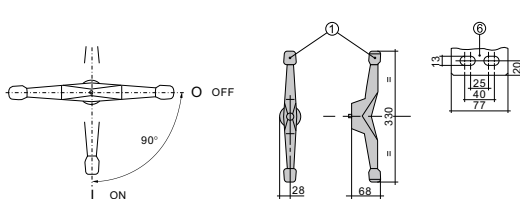


GLR-1250A-3



GLR-1250A-4

Outline and installation size of GLR-1250A/I fuse group of isolation switch





GLD-3150A-3



GLD-100A-4



GLD-100A-4



GLD-250A-4



GLD-1000A-4

GLD-100~3150A Automatic transfer switch

Product features

- Good safety
 1. With double-row composite contact, levelly-pulling opening and closing mechanism, micro motor energy pre-stored technology as well as microelectronic control technology, it can basically realize no flashover (no arc chute)
 2. Adopt reliable mechanical and electrical interlocking
 3. Due to zero crossing technology, it can set to zero compulsorily under emergency (Cut off double circuit power synchronously)
 4. With visible indication of on/off position and padlocking function, it can get the space between power supply and load.
- High reliability, service life reaching 100A, 5000 times, 630A-1600A, 3000 times.
 1. Being designed with electromechanical integration, the switch transfers accurately, flexibly and smoothly. Provided with main components of international famous brand such as PHILIPS, MOTOROLA WAGO and OMRON.
 2. Superior electromagnetism compatibility, strong capability to resist the interference, no interference to outside
- High automation
 1. The switch has multi-circuit input/output interface that can realize PLC remote control as well as automation of system.
 2. The switch needn't any external control elements
- Nice appearance, small volume, light weight

The product conforms to following standards: GB/T 14048.11-2008/IEC60947-6-1 Automatic Transfer Switching Equipment, GB/T14048.3-2008/IEC60947-1 Low-voltage Switchgear and Controlgear General Rules as well as GB/14048.3-2008/IEC60947-3 Low-voltage Switchgear and Controlgear--Low-voltage Switches, Disconnectors, Switch-disconnectors and Fuse-combination units

Model description

GLD **B** ☐ ☐ ☐ ☐ / ☐
1 **2** **3** **4** **5**

1. Code of automatic transfer switch
2. Ultra-thin type (A-full-automatic)
3. Rated current
4. A (full-automatic), S(remote-control), E (generator type)
5. Pole no .

GGLD Ultra-thin type

- Excellent safety performance
 1. Adopt double-row compound type contact, across-connecting structure, micro motor pre-storing energy and microelectronic control, basically realize zero-flashover (without arc chute)
 2. Adopt reliable technologies of mechanical interlock and electrical interlock
 3. Adopt zero crossing technology (double disconnecting positions)
 4. With function of indication for making and breaking position and padlocking, it can realize the distance between power supply and load reliably.
- High reliability, service life: 100A, 5000 times, 630A-1600A, 3000 times. times

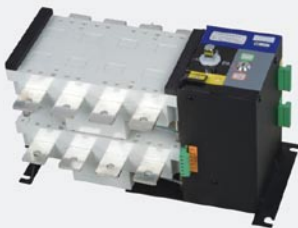
Electromechanical design, the switch changes over accurately, flexibly and reliably
- Excellent electromagnetic compatibility, strong anti-jamming capability, and no interference to the outside
- High automation

Full automatic type, not need any other control elements
- Elegant appearance, small volume, light weight

Logical control board, controls the operation of motor and gear box mounted in switch directly by different logic, to assure witch's position. The motor is neoprene insulated damp-heat type, with safety device, it will trip when the temperature is over 110℃ or there is over current. It will put into work automatically when the fault is eliminated. We adopt spur-gear for reversible reduction gear.



GLD-160A-4

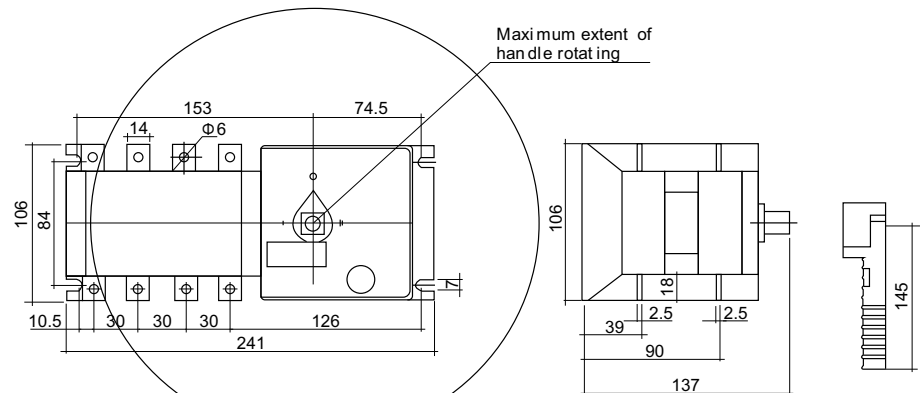


GLD-630A-4



GLD-1600A-4

Outline & installation size

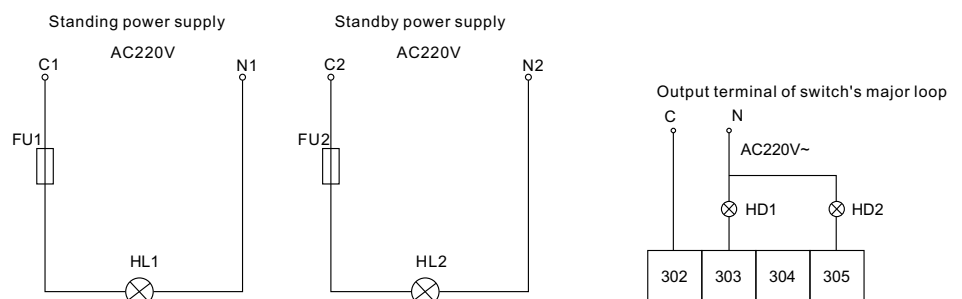


Manual operating handle

Main technical indexes

Conventional heating current	20A	40A	63A	80A	100A
Rated insulation voltage U_i	690V				
Rated impaction withstand voltage U_{imp}	8KV				
Rated working voltage U_e	AC380V				
Rated working current I_e	20A	63A	63A	80A	100A
Load character	AC33iB				
Rated making capacity	10Ie				
Rated breaking capacity	8Ie				
Rated limiting short-circuit current	50KA				
Rated short time withstand current IS	7KA				
Change-over time	1S				
Voltage of control power supply	AC220V				
Energy consumption of the motor	40W				
Weight Kg	4.2	4.3	4.4	4.5	4.5

Wiring diagram of terminals (without double-breaking)

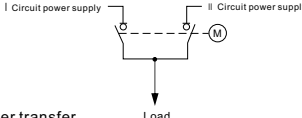
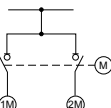
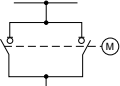
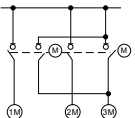


Note: HL1 and HL2 are power on indicators for standing power supply and standby power supply respectively; HD1 and HD2 are indicators for standing power supply; Fu1 and Fu2 are fuses of 2A; 302~305 are switch terminals.

Main technical indexes

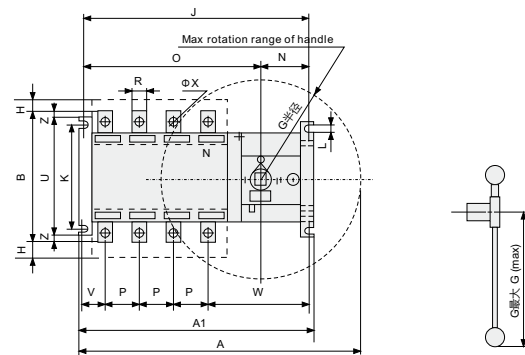
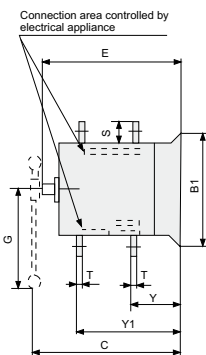
Conventional heating current		125A	160A	250A	400A	630A	800A	1000A	1250A	1600A	2000A	2500A	3150A	
Rated insulation voltage U ₁		800V												
Rated impaction withstand voltage U _{imp}		4KV						8KV						
Rated working voltage U _e		AC440V												
Rated working current I _e	AC-32B	125	160	250	400	630	800	1000	1000	1250	2000	2000	2500	
Rated making capacity		17KA			25.2KA			34KA						
Rated breaking capacity														
Rated limiting short-circuit current		20KA						50KA						
Rated short time with stand current I _S		10KA			12.6KA			20KA						
Change-over time		2S						3S						
Voltage of control power supply		AC220V												
Energy consumption of the motor	启动	300W		325W		355W		400W	440W			600W		
	正常	55W		62W		74W		90W	98W			120W		
Weight Kg	4	7.5		8.8	9	16.5	17	32	36	40	49	95	98	135

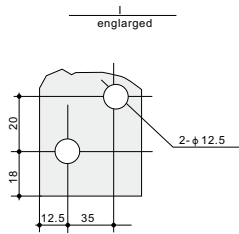
Applicable scheme

 <p>Dual-power transfer</p>	<ul style="list-style-type: none"> Terminal transfer for each floor power supply of tall building. Power supply transfer for fire-control facility Power supply transfer for basement facility Power supply transfer for expressway toll station Power supply transfer for railway signal lamp Low voltage distribution power supply transfer (above 400A in general)
 <p>Transfer for dual-circuit load</p>	<ul style="list-style-type: none"> Each fire pump of tall building Conveyer Water pump
 <p>Reversible operation of motor</p>	<ul style="list-style-type: none"> On/Off of electric valve Rise/fall of hoisting machinery In/out of conveyer
 <p>Multi-service one-reserved control</p>	<ul style="list-style-type: none"> 1 ATS for one-service one-reserved 2 ATS for two-service one-reserved 3 ATS for three-service one-reserved NATS for N-service one-reserved

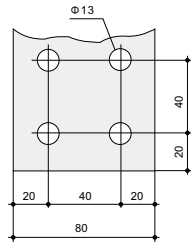
Outline & installation size

GLD125~1600A





1000A



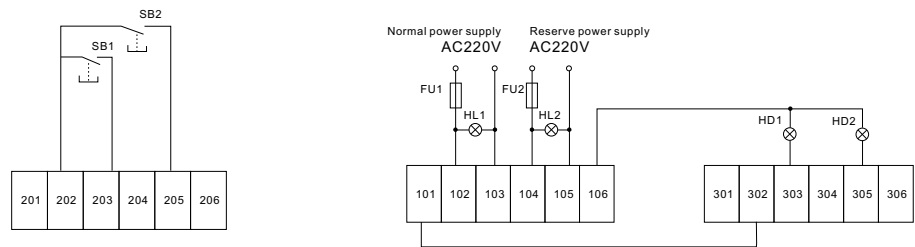
1600A

125~1600A Outline & installation size

Overall size									Installation for switch					Connecting terminal												
Spec.	A	A1	B	B1	C	E	G	H	J	K	L	N	O	P	R	S	T	U	V	W	X	Y	Y1	Z		
125A	435	300	135	135	240	205	145	30	280	80/110	7	86	195	36	20	25	3	135	20	152	8.5	58	142	8		
160A	435	300	135	135	240	205	145	30	280	80/110	7	86	195	36	20	25	3	135	20	152	8.5	58	142	8		
250A	453	359	170	135	240	205	145	30	340	80/110	7	86	255	50	25	30	3.2	135	27	162	10.5	62	143	15		
400A	525	445	240	208	319	273	190	25	424	180	9	89	315	65	32	40	5	208	38	180.5	10.5	84	197	20		
630A	525	445	260	208	319	273	190	25	424	180	9	89	315	65	40	50	6	208	38	180.5	12.5	85	198	20		
800A	1007	630	310	250	370	325	470	65	610	220	11	88	524	120	60	55	8		60	188.5	12.5	110	256			
1000A	1007	630	310	250	370	325	470	65	610	220	11	88	524	120	60	55	8		60	188.5	12.5	110	256			
1250A	1007	630	335	250	370	325	470	65	610	220	11	88	524	120	80	68	8		60	188.5	12.5	110	256			
1600A	1007	630	335	250	370	325	470	50	610	220	11	88	524	120	80	68	10		60	188.5	12.5	111	257			

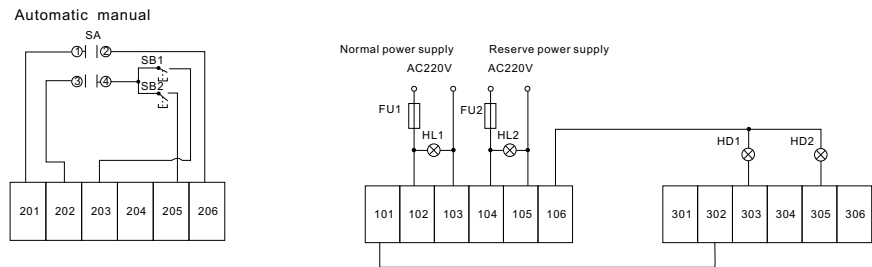
GLD-125~3150A auto transfer switch

A. GLD-□S Remote-control wiring way



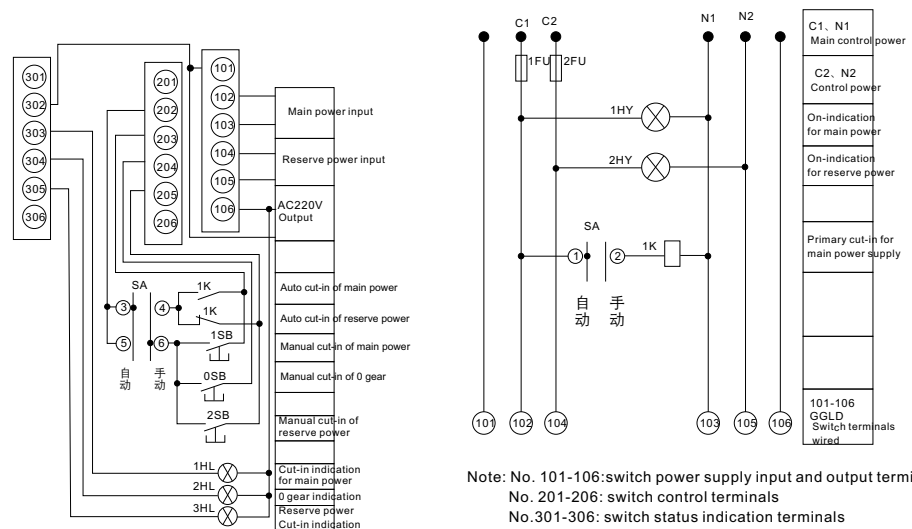
Note: SB1: Manual normal power cut-in button (passive contact)
SB2: Manual normal power cut-in button (passive contact)

B. GLD-□S Auto+ manual (remote-control) wiring way (rated current 125-3,150A applicable)



Note: SA: automatic/manual functional selector switch
SB1: Manual normal power cut-in button (passive contact)
SB2: Manual reserve power cut-in button (passive contact)

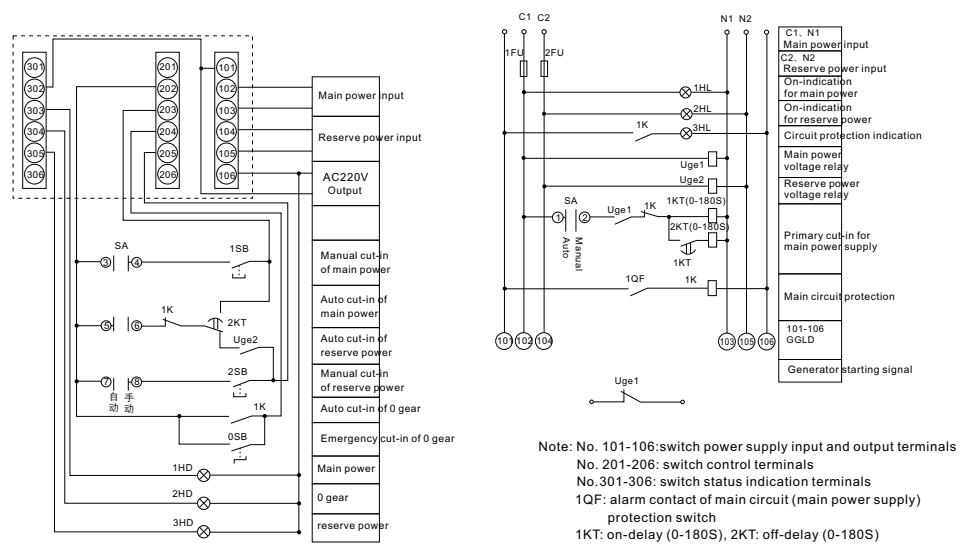
C. GLD-□S Auto+ manual (remote-control) wiring way



List of material for auto + manual (remote-control) wiring way

No.	Code	Name	Spec. & Model	Unit	Qty.	Remark
1	1HY-1HY 1HL-3HL	Indicator lamp	AD11-25/220V	Pcs.	5	
2	1K	Auxiliary relay	HH52P或JZX-22F	Pcs.	1	AC220V
3	1FU, 2FU	Fuse	RT14-3A	Pcs.	2	
4	SA	Transfer switch	LW5-16	Pcs.	1	
5	OSB-2SB	Push-button switch	LA38-22	Pcs.	3	

D、GLD-□E Wiring way of generator (one-circuit commercial power, one-circuit power generation)

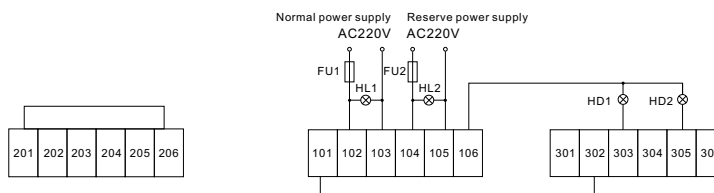


List of material for wiring way of generator

No.	Code	Name	Spec. & Model	Unit	Qty.	Remark
1	ATS	Automatic transfer switch	GGLD	Pcs.	1	Generator type E
2	1QF	Circuit breaker	KMM1	Pcs.	1	User can choose in the light of actual current
3	1-2Uge	Voltage relay	JD-111/60-400V	Pcs.	2	
4	SA	Transfer switch	CJK22-22X2B/K	Pcs.	1	
5	O-2SB	Button	LA38-11/209	Pcs.	3	OSBP: self-locking button
6	1K	Auxiliary relay	HH52P	Pcs.	1	AC220V
7	1KT	Time relay	ST3PA-D	Pcs.	1	(0-180S) On-delay
8	2KT	Time relay	ST3PA-D	Pcs.	1	(0-180S) Off-delay
9	1-3HL	Indicator lamp	AD11-8GZ	Pcs.	3	Red
10	1-3HD	Indicator lamp	AD11-8GZ	Pcs.	3	Green
11	1-2FU	Fuse	RT18-32X 3A	Pcs.	2	

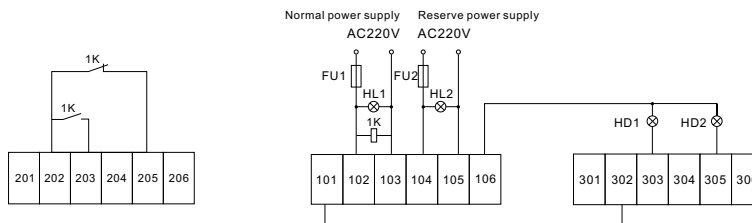
Typical wiring

A. GLD-□A Full-automatic wiring way (rated current 125~3150A applicable)



Note: HL1, HL2: On-indication for normal power and reserve power respectively.
HD1, HD2: Cut-in indication for normal power and reserve power respectively
FU1, FU2 :3A fuses
101-106、201-206、301-306: GGLD switch terminals

B. GLD-□A Full-automatic wiring way



Note: HL1, HL2: On-indication for normal power and reserve power respectively.
HD1, HD2: Cut-in indication for normal power and reserve power respectively
FU1, FU2 :3A fuses
101-106、201-206、301-306: GGLD switch terminals
1K: Auxiliary relay