



### Application

This fuse type is mainly used for breaking in case of possible photovoltaic series of solar energy-collecting plates in solar energy photovoltaic header boxes and circuit overload and short-circuit current caused by current feedback of inverters, thus protecting the entire photovoltaic energy-collecting plates. Also it can be used in any other DC circuits as an option for circuit overload and short-circuit protection of electric elements.

### Basic parameters of fuse

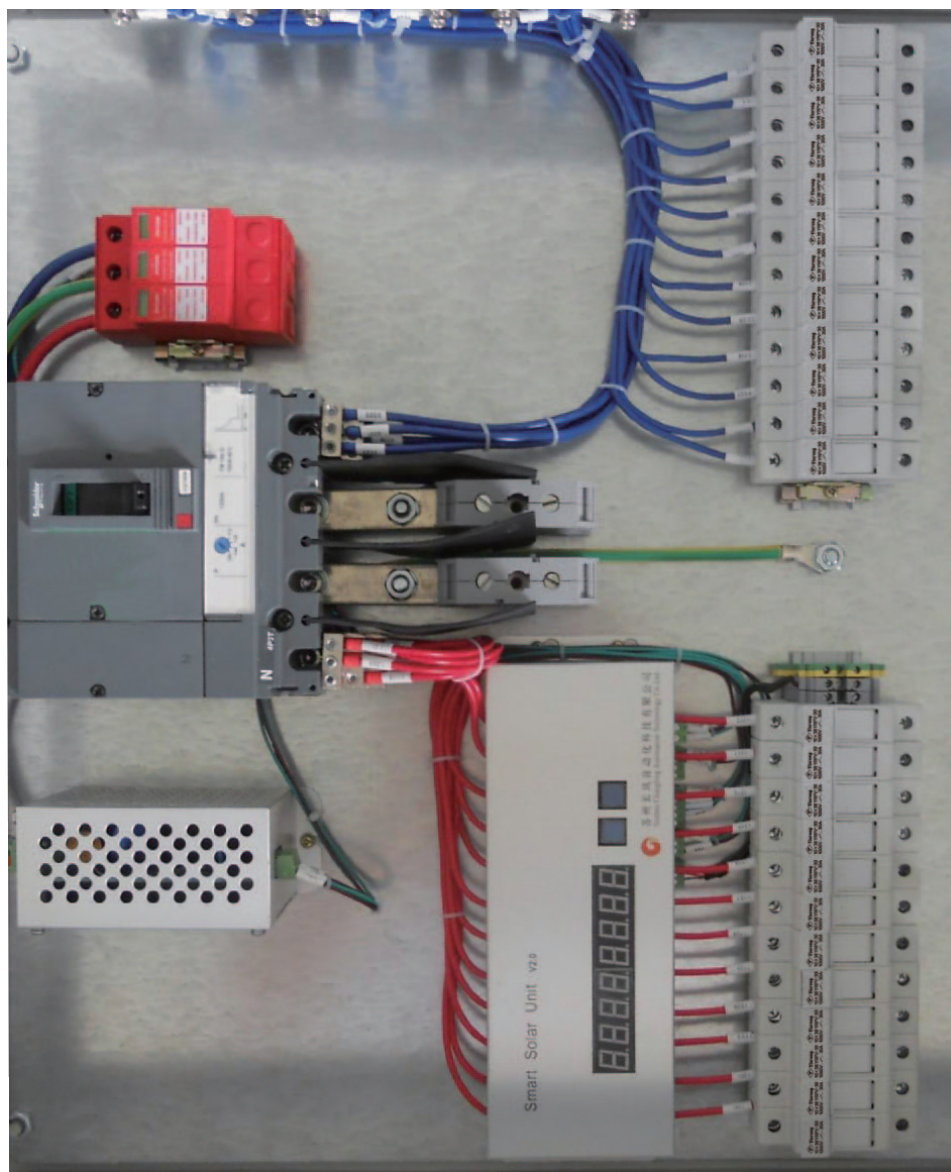
Rated voltage: DC1000V; rated current:63A; service category: gPV; also available for derivatives like gG and aM; breaking capacity: 20kA; and main guidance and conformity standards: GB13539.1/IEC60269-1, GB13539.2, IEC60269-6.

### Structural features

The fuse link's appearance includes round and square tubes, and inside it, a conductor with a variable cross-section, made of a silver or pure copper type, is enclosed in a high-temperature-resistant and high-strength ceramic tube, with enough filling of high-silicon quartz sand as the arc-extinguishing medium.

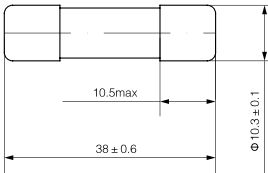
### Basic data

See the figure for the product's type/size, rated voltage, rated current and overall dimensions.

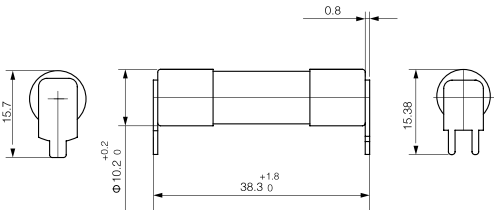


1

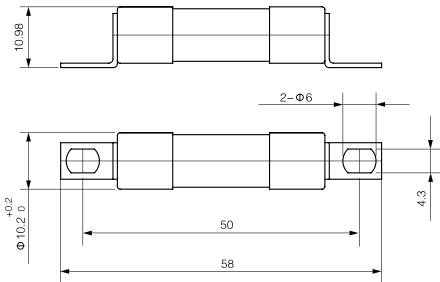
No.	Model / Size	Rated Voltage	Rated current	Overall dimension
001	GRP-V-30/10X38A	DC/1000	1,2,3,4,5,6,8,10,12,15,20,25,30	Fig.



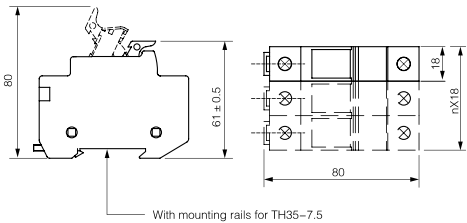
No.	Model / Size	Rated Voltage	Rated current	Overall dimension
002	GRP-V-30/10X38B	DC/1000	1,2,3,4,5,6,8,10,12,15,20,25,30	Fig.



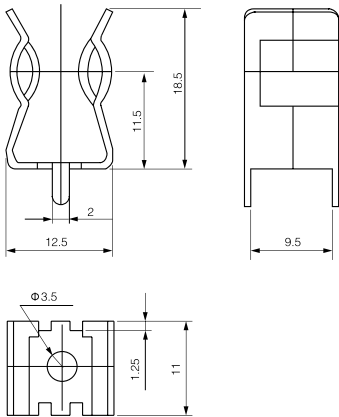
No.	Model / Size	Rated Voltage	Rated current	Overall dimension
003	GRP-V-30/10X38C	DC/1000	1,2,3,4,5,6,8,10,12,15,20,25,30	Fig.



No.	Model / Size	Rated Voltage	Rated current	Matched with fuse body measurement	Overall dimension
004	GRP V-30	1000	30	GRP V-30/10X38	Fig.



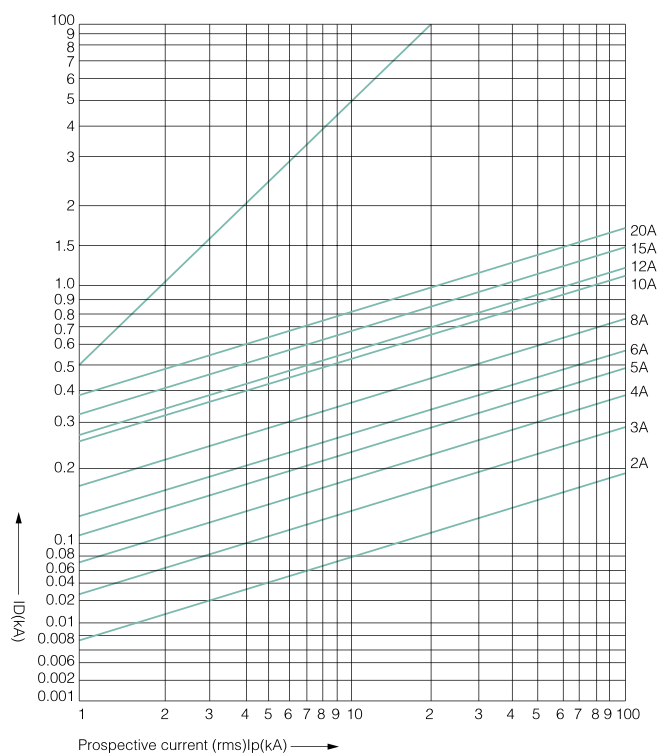
No.	Model / Size	Rated Voltage	Rated current	Matched with fuse body measurement	Overall dimension
005	GRP V-30/10X38	DC/1000	30	GRP V-30/10X38	Fig.



1

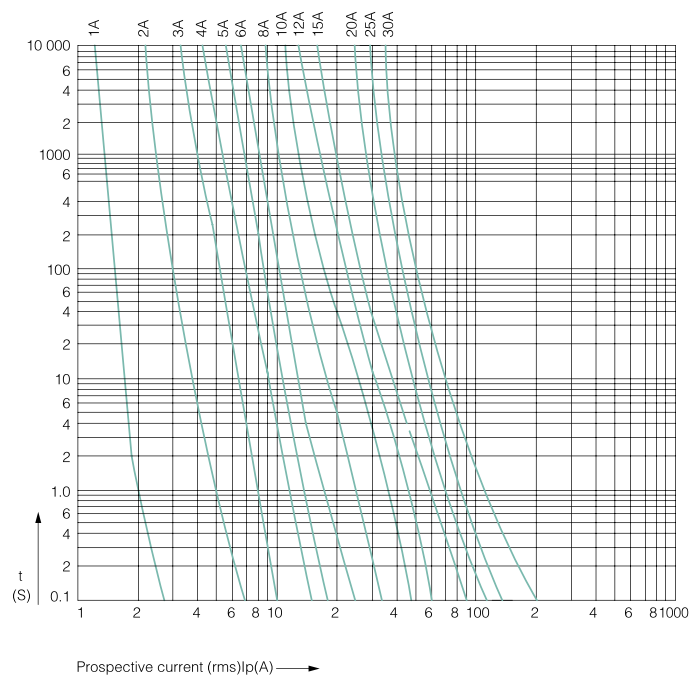
GRPV-30 solar(PV) power protection: fuse (body) DC 1000V gPV

Current limiting / current characteristics

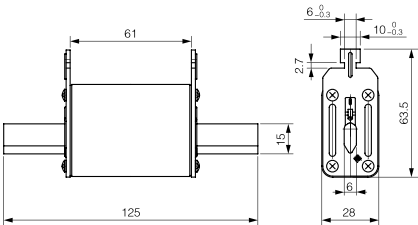


GRPV-30 solar(PV) power protection: fuse (body) DC 1000V gPV

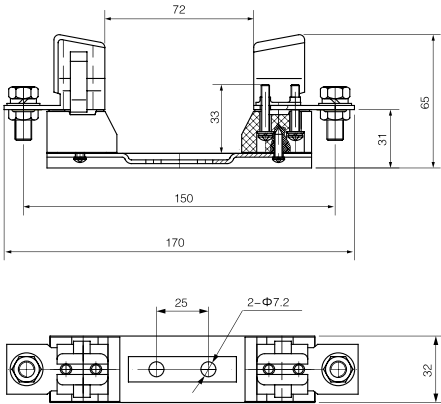
Time / current characteristics



No.	Model / Size	Rated Voltage	Rated current	Overall dimension
006	GRP-V-160	DC/1000	40.50.63.80.100.125.160	Fig.



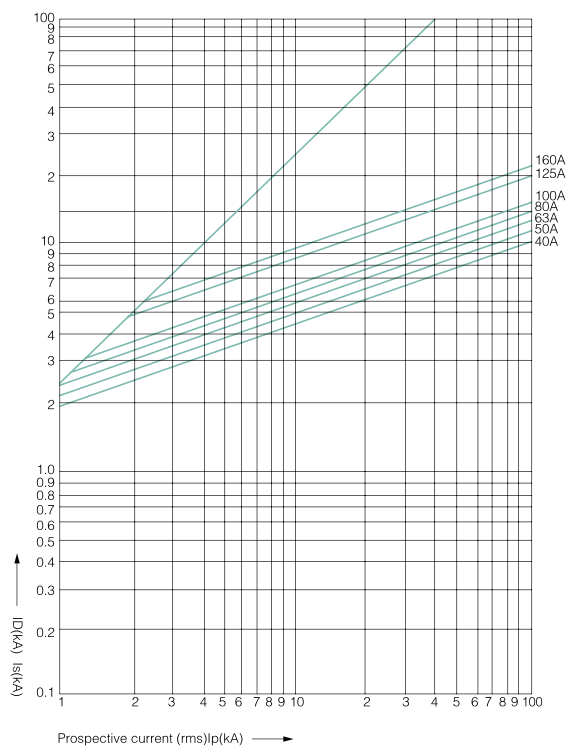
No.	Model / Size	Rated Voltage	Rated current	Matched with fuse body measurement	Overall dimension
007	GRP-V-160	DC/1000	160	GRP-V-160	Fig.



1

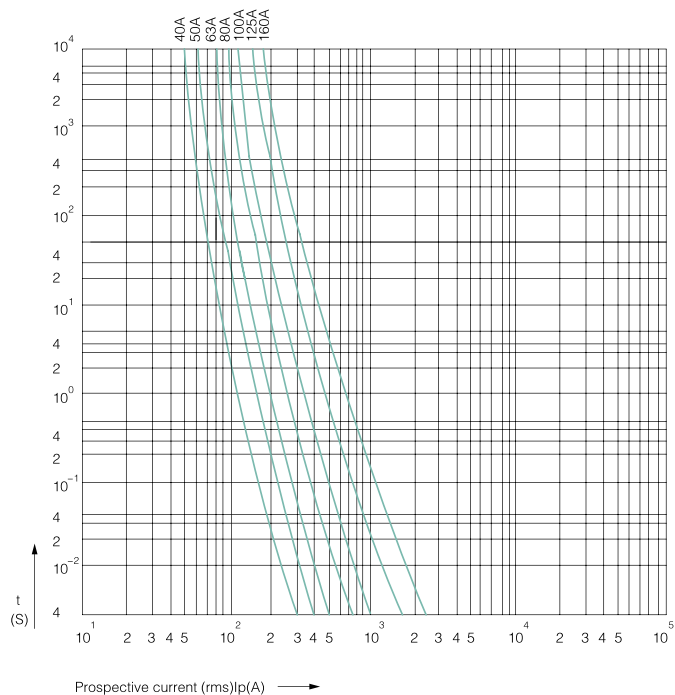
GRP-V-160 solar(PV) power protection: fuse (body) DC 1000V gPV

Current limiting / current characteristics

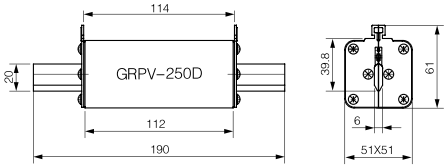


GRP-V-160 solar(PV) power protection: fuse (body) DC 1000V gPV

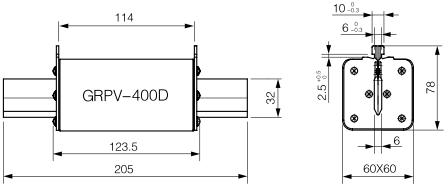
Time / current characteristics



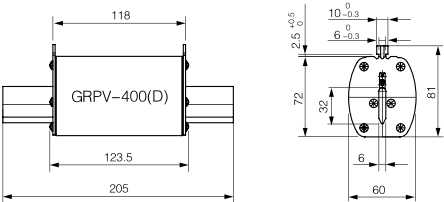
No.	Model / Size	Rated Voltage	Rated current	Overall dimension
008	GRPV-250D	DC/1000	63.80.100.125.160.200.250	Fig.



No.	Model / Size	Rated Voltage	Rated current	Overall dimension
009	GRPV-400D	DC/1000	125.160.200.250.315.350.400	Fig.

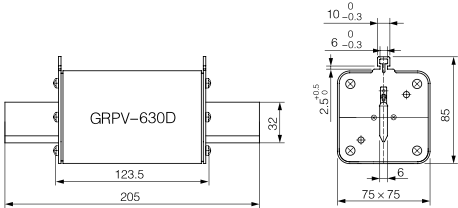


No.	Model / Size	Rated Voltage	Rated current	Overall dimension
010	GRPV-400(D)	DC/1000	125.160.200.250.315.350.400	Fig.

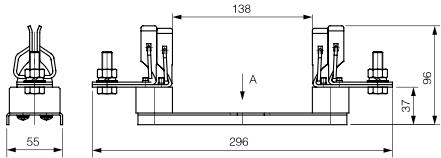


1

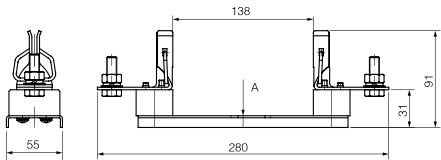
No.	Model / Size	Rated Voltage	Rated current	Overall dimension
011	GRP-V-630D	DC/1000	250.315.350.400.450.500.630	Fig.



No.	Model / Size	Rated Voltage	Rated current	Matched with fuse body measurement	
012	GRP-V-630D	dC:1000	630	GRP-V-630D	
			400	GRP-V-400D	
			400	GRP-V-400(D)	



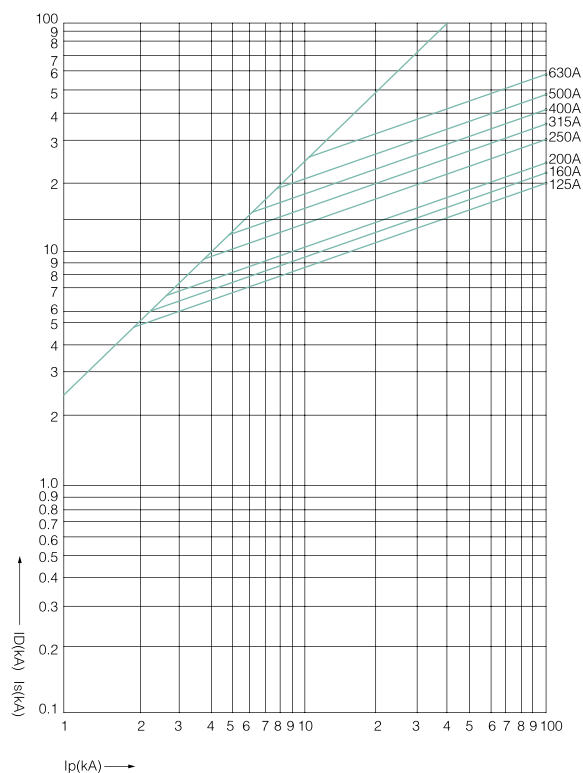
No.	Model / Size	Rated Voltage	Rated current	Matched with fuse body measurement	Mounting dimensions with GRPV -630D
013	GRP-V-250D	dC:1000	250	GRP-V-250D	





GRP-V-630D solar(PV) power protection: fuse (body) DC 1000V gPV

Current limiting / current characteristics



GRP-V-630D solar(PV) power protection: fuse (body) DC 1000V gPV

Time / current characteristics

