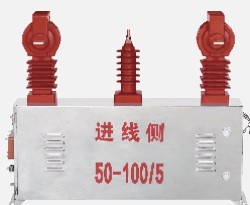


Transformer description

JLSGWV-6、10



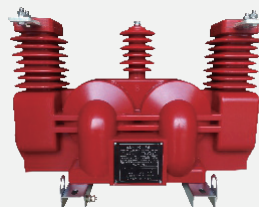
Page 09-10

JLSGWY-6、10



Page 11-12

JLSZV-6、10



Page 13-14

JLSZY-6、10



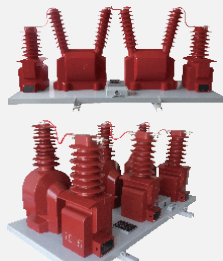
Page 15-16

JLSZY-6、10



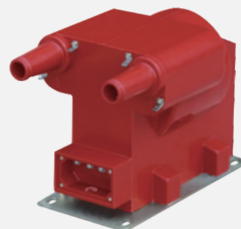
Page 17-18

JLSZY-35



Page 19-20

JDZ16-3、6、10R



Page 21

JSZV12-3、6、10R



Page 22

JSZY16、10R



Page 23

JSZW12-10FR



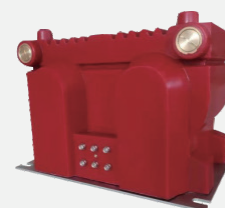
Page 24

JDZ18-10R



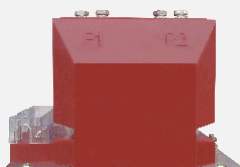
Page 25

JSZV1-3、6、10R



Page 26

LZZB9-10S



Page 27

LZZBJ9-10A



Page 28

LZZBJ9-12C2



Page 29

LZZB6-10



Page 30

Transformer description

LZJC 10Q



Page 31

LZX8- 10Q



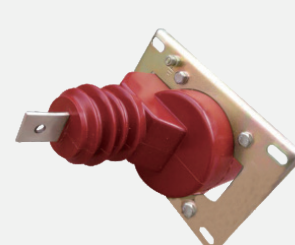
Page 32

LZZW 10Q



Page 33

LAZBJ 10



Page 34

LA 10Q



Page 35

LMZJ1 10



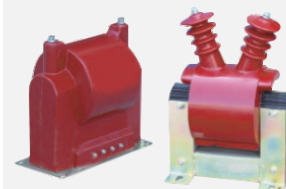
Page 36

JDZ1(J) 3、6、 10Q



Page 37

JDZC 6、 10



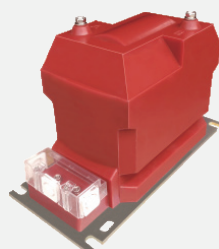
Page 38

JDZW 3 6 10R



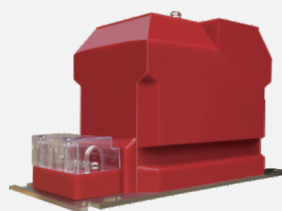
Page 39

JDZ10 3 6 10Q



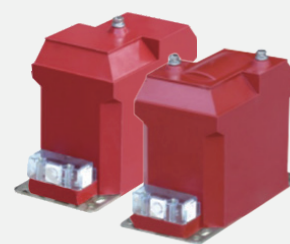
Page 40

JDZX10 3 6 10



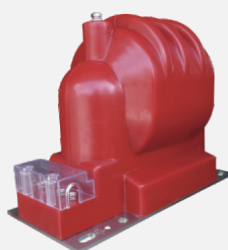
Page 41

JDZ(X)10 3 6 10B



Page 42

JDZ9 3 6 10Q(G)



Page 43

JDZX9 3 6 10Q



Page 44

LZZBJ9 24/180b/2



Page 45

JDZ(X)11 5 20G



Page 46

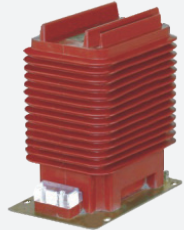
Transformer description

JDZX11 15. 20



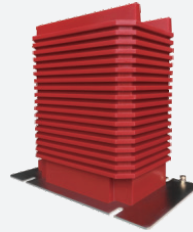
Page 47

LZZBJ9 35



Page 48

LZZBJ9 35D



Page 49

LZZBJ4 35



Page 50-51

LZZBJ71 35W



Page 52

LZZW 35



Page 53

JDZX9 35



Page 54

JDZXW 35



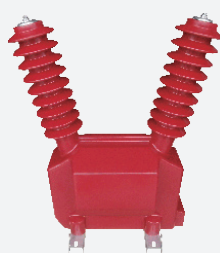
Page 55

JDZ(X)9 35Q(G)



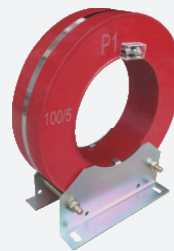
Page 56

JDZW9 35Q(G)



Page 57

LXK \varnothing 80~240



Page 58-59

LMZK(1 2 3) 10



Page 60-62

LMZK8 10



Page 63

LMZK8 10



Page 63

LMZK8 10



Page 64

LMZK8 10



Page 65

Transformer description

LMZK8 10



Page 66

LMZK8 10



Page 66

LSY107 10



Page 67-68

LSZJ1 10



Page 69

LMZC (1 2 3) 10



Page 70-71

LMZT8 10



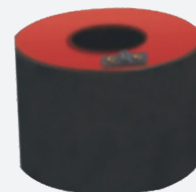
Page 72

LMZT8 10



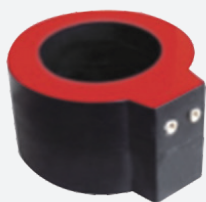
Page 72

LMZT8 10



Page 73

LMZT8 10



Page 73

LMZT8 10



Page 74

LMZT8 10



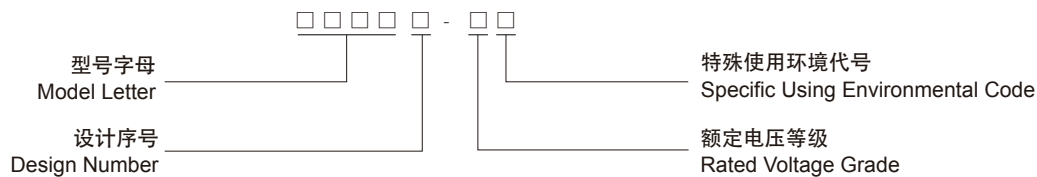
Page 75

Transformer description

型号含义 Model description

电流互感器和电压互感器的型号组成分为两部分，前一部分为产品型号字母和设计序号，后一部分为额定电压等级(kV)和特殊使用环境代号。(型号字母含义附后)。

The model composition of current transformer and voltage transformer is divided into two parts. The first part is the product model letter and design number, the latter part is rated voltage grade (kV) and special use environment code (The meaning of model letter is attached.)



概述 Overview

互感器是电力系统中重要的电气设备之一，它和电力变压器相似，也是用来转换线路的电压或电流。但是，电力变压器转换电压和电流的目的，在于传递电能，互感器转换电压或电流的目的，在于测量和监视线路的电压或电流。一般来说，电力变压器的容量大，电压或电流的变化误差也大，互感器的容量小，电压或电流的变化则较小。在测量线路中，用来转换电流，向电流仪表和继电器供电的互感器叫做电流互感器，用来转换电压，向电压仪表和继电器供电的互感器叫做电压互感器。

Transformer is one of the most important electrical equipment in power system which is similar to power transformer. It is also used to convert voltage or current of line. However, the purpose of power transformer converting voltage and current is to transfer electric energy, and the purpose of transformer converting voltage or current is to measure and monitor the voltage or current of the line. Generally speaking, if the capacity of power transformer is large, the variation error of voltage or current is also large. If the capacity of transformer is small, the variation of voltage or current is small. In the measurement line, the transformer used to convert current and supply power to current instrument and relay is called current transformer, and the transformer used to convert voltage and supply power to voltage instrument and relay is called voltage transformer.

互感器特殊使用环境代号 Code for special use environment of transformer

- 1.高原地区用代表符号：“GY”
- 2.污秽地区用代表符号见右表
- 3.腐蚀地区用代表符号：“F”
- 4.干热带地区用代表符号：“TA”

Transformer description

互感器特殊使用环境代号 Code for special use environment of transformer

- 5. 湿热带地区用代表符号: "TH"
- 6. 干、湿热带地区用代表符号: "T"
- 7. 温升限值比标准规定限值降低 5k 以上时, 用 "WS" 表示。
- 1. Code of using in highland area: "GY"
- 2. See the right table for code of using in unpolluted area
- 3. Code of using in currosive area: "F"
- 4. Code of using in drytropic region: "TA"
- 5. Code of using in wet tropic region: "TH"
- 6. Code of using in drywet tropic region: "T"
- 7. When the temperature rise limit is more than 5K lower than the standard limit, "WS" is used.

污秽地区使用代表符号 Use of symbols in polluted areas	GB5582-85中规定 Stipulated in GB5582-85	
	污秽等级 Pollution level	最小公称爬电比距(mm/kV) Minimum nominal creepage distance
-	0	14.8
-	I	16
W1	II	20
W2	III	25
W3	IV	31

互感器分类 Transformer assortment

- 1. 按原理分类: 电压互感器可分为电容式电压互感器和电磁式电压互感器; 电流互感器均为电磁式电流互感器。
- 2. 按绕组外绝缘介质分类: 有干式、浇注式、油浸式和充气式 (SF6)。
- 3. 按用途分类: 可分为电压互感器、电流互感器两大类, 又可分为测量用、保护用、特殊用途及精密型四类。
- 4. 按安装地点分类: 可分为户内式和户外式两种。
- 5. 电压互感器按相数分类: 可分为单相和三相两种。
- 6. 电压互感器按绕组分类: 可分为双绕组、三绕组两种。
- 7. 电流互感器按安装方式分类: 有穿墙式、支持式和装入式三种。
- 8. 电流互感器按电流比分类: 有单变比、多变比两种。
- 1. According to principle classification: voltage transformer can be divided into capacitive voltage transformer and electromagnetic voltage transformer; All current transformers are electromagnetic current transformers.
- 2. According to the classification of external insulation medium of winding: dry type, pouring type, oil immersed type and gas filled type (Sf6).
- 3. Classification by application: it can be divided into voltage transformer and current transformer, and it can be divided into measurement, protection, special purpose and precision type.
- 4. Classified by installation location: it can be divided into indoor type and outdoor type.
- 5. Voltage transformer can be divided into single phase and three phase according to the number of phases.
- 6. Voltage transformer can be divided into two types according to winding: double winding and three winding.
- 7. Current transformers are classified according to installation methods: through wall type, support type and built in type.
- 8. Current transformers are classified according to current ratio: single ratio and multiple ratio.

Transformer description

适用工作条件 Applicable working conditions

1. 海拔高度不超过 1000米。(高原地区使用时, 请提供海拔高度)。
 2. 周围气温最大变化不超过- 5℃到40℃(特殊要求时, 请在订货时注明)
 3. 普通型产品使用在相对湿度不大于85%的地区。
 4. 安装场所无严重影响互感器绝缘的气体、蒸汽、化学性沉积、灰尘污垢及其他爆炸性和腐蚀性介质, 并无严重的震动和颠簸。
1. The sea level should not exceed 1000 meters (Please provide the altitude when using in plateau area.)
 2. The maximum change of ambient air temperature shall not exceed 5 °C to 40 °C (please indicate when ordering if there are special requirements)
 3. Ordinary products are used in areas with relative humidity less than 85%.
 4. There is no gas, steam, chemical deposition, dust, dirt and other explosive and corrosive media seriously affecting the insulation of the transformer in the installation site, and there is no serious vibration and turbulence.

引用标准 Reference standard

GB20840.32013 《电磁式电压互感器》	GB20840.32013 《Inductive Voltage transformers》
GB20840.22014 《电流互感器》	GB20840.22014 《Current transformers》
GB20840.42015 《组合互感器》	GB20840.42015 《Combined instrument transformers》
JB/T104332004 《三相电压互感器》	JB/T104332004 《Three-phase Voltage transformers》
JB/T104322004 《三相组合互感器》	JB/T104322004 《Three-phase combined instrument transformers》
GB311.11997 《高压输变电设备的绝缘配合》	GB311.11997 《Insulation coordination of high voltage transforming equipment》
GB/T73542003 《局部放电测量》	GB/T73542003 《Partial discharge measurements》
DL/T6532009	DL/T6532009
《高压并联电容器用放电线圈订货技术条件》	《Specification of discharge coils for high voltage shunt capacitor for order》

注意事项 Attention

1. 电流互感器一次有电流通过时, 二次绕组不得开路, 否则有高压产生, 对产品性能亦有影响。
 2. 电压互感器二次绕组不得短路, 否则互感器将被烧毁。
 3. 一次绕组的重复工频耐压, 试验应在规定试验电压值的80%下进行。
1. When the primary current of the current transformer passes through, the secondary winding shall not be open circuit, otherwise there will be high voltage which will also affect the product performance.
 2. The secondary winding of voltage transformer shall not be short circuited, otherwise the transformer will be burned.
 3. The repeated power frequency withstand voltage test of primary winding shall be conducted at 80% of the specified test voltage.

附：互感器型号字母含义 Type and implication of transformer

电流互感器 Current transformer (L)

序号 Code	字母含义 Implication of letter	代表字母 Represents letter
1	母线式 Busbar type	M
	贯穿单匝式 Single turn through type	F
	贯穿复匝式 Compound turn through type	D
	线圈式 Coil type	Q
	穿墙式 Wall through type	A
	支持式 Support type	B
	支柱式 Post type	Z
	装入式 Bushing type	R
	手车式 Handcart type	C
	接地保护 Earth Fault Protection	J
低压 Low Voltage	Y	

Transformer description

2	浇注绝缘 Castresin insulated	Z
	瓷绝缘 Porcelain insulated	C
	塑料外壳 Plastic Casing	K
	户外式 Outdoor type	W
	母线式 Busbar type	M
	干式 Dry type	G
	加强式 Reinforced type	Q
3	小体积柜用 For small volume cabinet using	X
	手车柜用 For handcart cabinet using	S
	差动作用 Used for differential protection	D
	加强型 Reinforced type	Q
	铝线式 Aluminium wire type	L
	加大容量 Extension output	J
	差动保护用 Used for differential	D
	保护用 Used for protection	B
	双变比以上 Over double ratio	S
	差动保护 Differential protection	C
塑壳式 Molded case type	C	

电压互感器 Voltage transformer (J)

序号 Code	字母含义 Implication of letter	代表字母 Represents letter
1	单相 Singlephase	D
	三相 Threephase	S
	浇注式 Castresin type	Z
2	油浸式 Oilimmersed type	J
	浇注绝缘 Castresin insulated	Z
	干式绝缘 Drytype insulated	G
	气体绝缘 Air insulated	Q
	户外 Outdoor	W
3	接地保护 Ground protection	J
	带熔断器保护 With fuse for protection	R
	带剩余(零序)绕组 With residual winding (zero sequence)	X
	“串”级式带剩余(零序)绕组 With residual (zero sequence) winding of series connection type	C
4	五柱三线圈 Fivelegs threecoil	W

订货须知 Ordering instructions

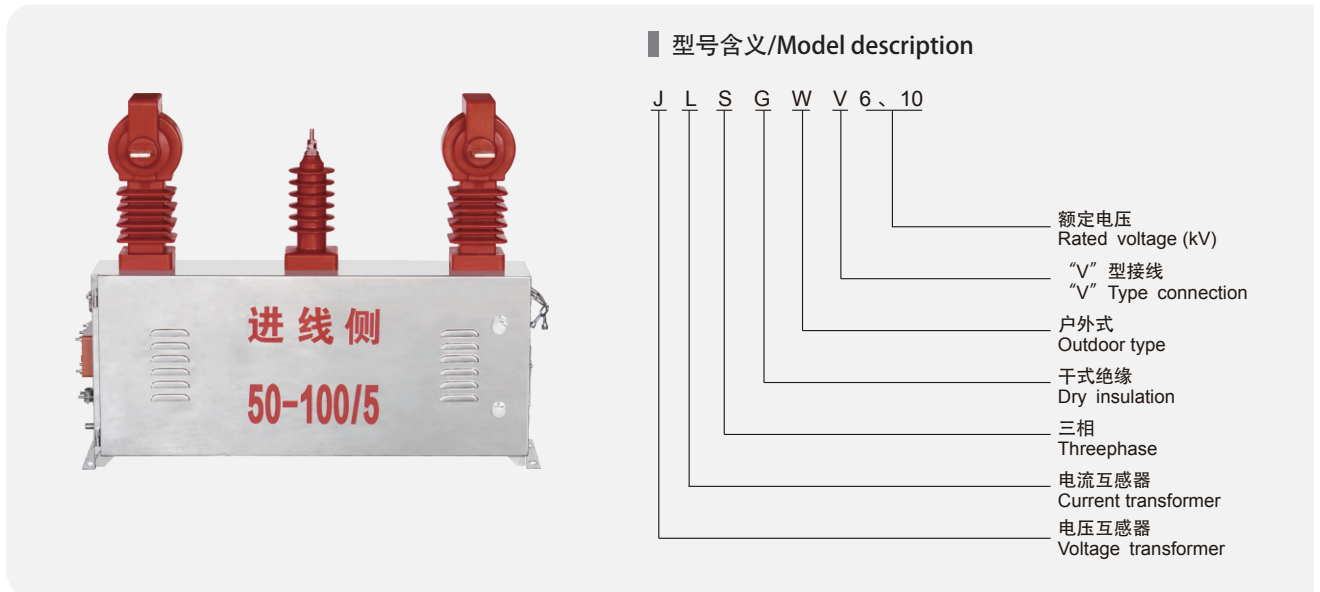
1. 订购电流互感器时, 请提供产品型号、额定电流比、准确级或准确级组合及相应的额定输出、额定短时热电流、额定动稳定等。

When ordering the current transformer, please offer the type of products, rated ratio, accuracy class or accuracy classes combination and relevant rated output, rated short time thermal current, rated dynamic current etc.

2. 订购电压互感器时, 请提供产品型号、额定电压比、准确级或准确级组合及相应的额定输出、极限输出等。

When ordering the voltage transformer, please offer the type of products, rated voltage ratio, accuracy class or accuracy classes combination and relevant rated output, limit output etc.

10kV high voltage metering box



概述/Description

本产品为户外结构，由组合互感器和表箱两大部分组成。产品为五柱式，电压互感器采用V/V型接法，并联在AB和CB之间，组成三相测量装置，电流互感器安装在不锈钢箱体上，组合互感器由两只电流互感器(CT)和两只单相电压互感器(PT)组成。CT,PT均为电磁式，成上下排列。PT电压一次连接A、C电流P1端，B相电压由V/V接线并联成B相，外形采用大小防雨伞裙，表面爬电距离大，抗过压、抗污染能力强。箱体为不锈钢，二次出线为铠装电缆结构，安装方便，防窃电能力强。表箱与组合互感器的箱体分离，由长约8米的户外电缆和互感器的二次出线连接起来。表箱内装三相有功电表和无功电表各一块，从表箱观察窗可清楚地读抄数字。

This product is an outdoor structure composed of two parts: combined transformer and meter box. The product is five column type. The voltage transformer adopts V / V connection method and is connected in parallel between AB and CB to form a three phase measuring device. The current transformer is installed on the stainless steel box. The combined transformer is composed of two current transformers (CT) and two single phase voltage transformers (PT). CT and PT are electromagnetic, arranged up and down. PT voltage is connected to P1 terminal of A and C current at one time. B phase voltage is connected by V / V wiring in parallel to B phase. The shape of which adopts large and small umbrella skirt, with large surface creepage distance, strong anti overvoltage and anti pollution ability. The box is made of stainless steel, and the secondary outlet is armored cable structure, which is easy to install and has strong anti stealing ability. The meter box is separated from the box of the combined transformer, and is connected by an outdoor cable about 8 meters long and the secondary outgoing line of the transformer. A three phase active meter and a reactive meter are installed in the meter box, and the numbers can be read clearly from the observation window of the meter box.

技术参数/Technical data

电压部分参数 Parameter of voltage part

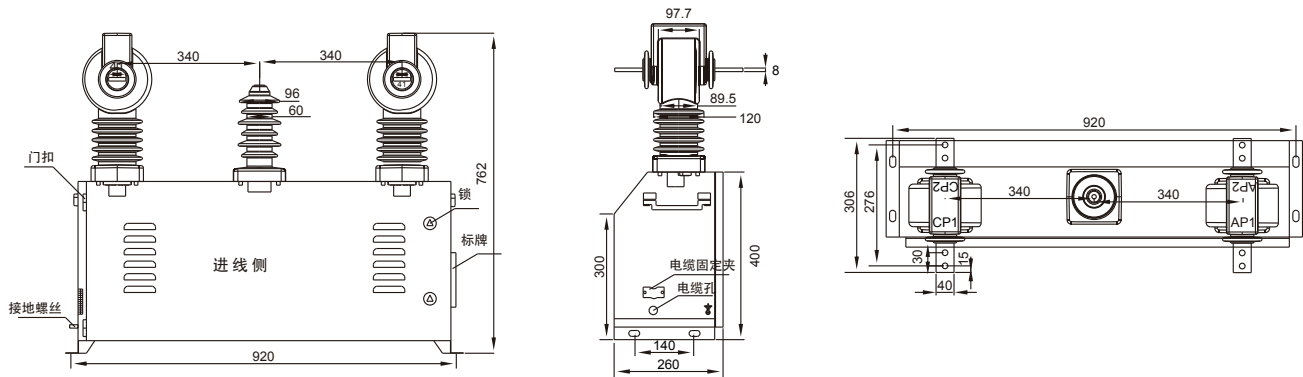
型号 Type	额定电压比 Rated voltage ratio (V)	准确级及三相额定二次输出 (VA) Accuracy class Threephase rated secondary output	极限输出 Max. output (VA)	额定绝缘水平 Rated insulation level (kV)
JLSGWV6	6000/100	0.22 ×20 0.52 ×60 12 ×80 32 ×200	2×400	7.2/32/60
JLSGWV10	10000/100			12/42/75

10kV high voltage metering box

电流部分参数 Parameter of current part

额定一次电流 Rated primary current (A)	单变比 Single Ratio	额定二次输出 Rated secondary output (VA)			一秒热稳定电流 1s thermal current (kA)	动稳定电流 Rated dynamic current (kA)
		0.2(S)	0.5S	0.5		
5-10-15	5	10	10	15	1.0	2.5
10-15-20	10				1.5	3.75
15-20-30	15				2.4	6.0
20-30-40	20、25				3.0	7.5
30 40 50	30				4.5	11
40-50-75	40				6.5	16.5
50-75-100	50				9	22.5
75-100-150	75				12	30
100-150-200	100				16	40
150-200-300	150				24	60
200-300-400	200、250				32	80
300-400-500	300				45	
400-500-600	400				60	

外形安装尺寸/Overall dimension drawing



接线图/Wiring diagram

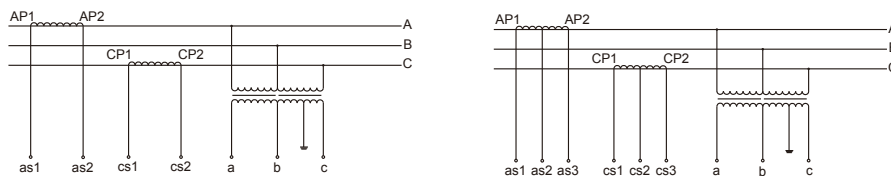
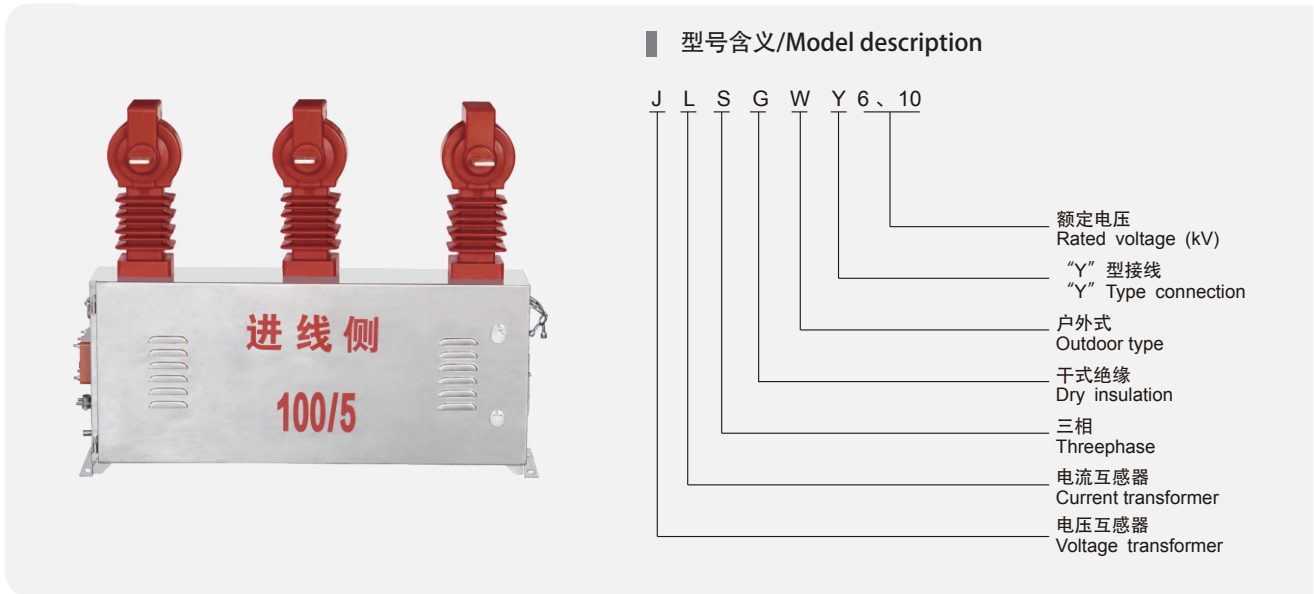


图1 (Figure 1)

图2 (Figure 2)

10kV high voltage metering box



概述/Description

本产品为户外结构，由组合互感器和表箱两大部分组成。产品为六柱式，由三台电压互感器 Y/Y连接三台电流互感器组合为一体，适用于额定频率为50Hz,额定电压10kV及以下电力系统中配三相四线电能表作电能计量用。具有爬电比距大、绝缘性能好、计量准确高、防窃电等优点，是实现高供高计的最佳选择。组合互感器由三只电流互感器(CT)和三只电压互感器(PT)组成。CTPT均为电磁式，成上下排列，电流互感器固定在箱体的顶盖上。外形采用大小防雨伞裙，表面爬电距离大，抗过压、抗污染能力强。箱体为不锈钢，二次出线为铠装电缆结构，安装方便，防窃电能力强。表箱与组合互感器的箱体分离，由长约8米的户外电缆和互感器的二次出线连接起来。表箱内装三相有功电表和无功电表各一块，从表箱观察窗可清楚地读抄数字。

This product is an outdoor structure composed of two parts: combined transformer and meter box. The product is six column type, which is connected by three voltage transformers Y/Y and three current transformers. It is suitable for rated frequency 50 Hz, and the rated voltage is 10 kV or below. The power system is equipped with three phase four wire watt hour meter for electric energy measurement. It has the advantages of large creepage distance, good insulation performance, accurate measurement and anti stealing. It is the best choice to realize high supply and high count. The combined transformer is composed of three current transformers (CT) and three voltage transformers (PT). The CT PT are all electromagnetic type, arranged up and down, with mutual current transformer is fixed on the top cover of the box. The shape adopts large and small umbrella skirt, with large surface creepage distance, strong anti overvoltage and anti pollution ability. The box is made of stainless steel and the secondary outlet is armored cable structure. It is easy to install and has strong anti stealing ability. The meter box is separated from the box of the combined transformer, and is connected by an outdoor cable about 8 meters long and the secondary outgoing line of the transformer. Three phase active power meter and reactive power meter are installed in the meter box. Each power meter has one piece, and the number can be read clearly from the observation window of the meter box.

技术参数/Technical date

电压部分参数 Parameter of voltage part

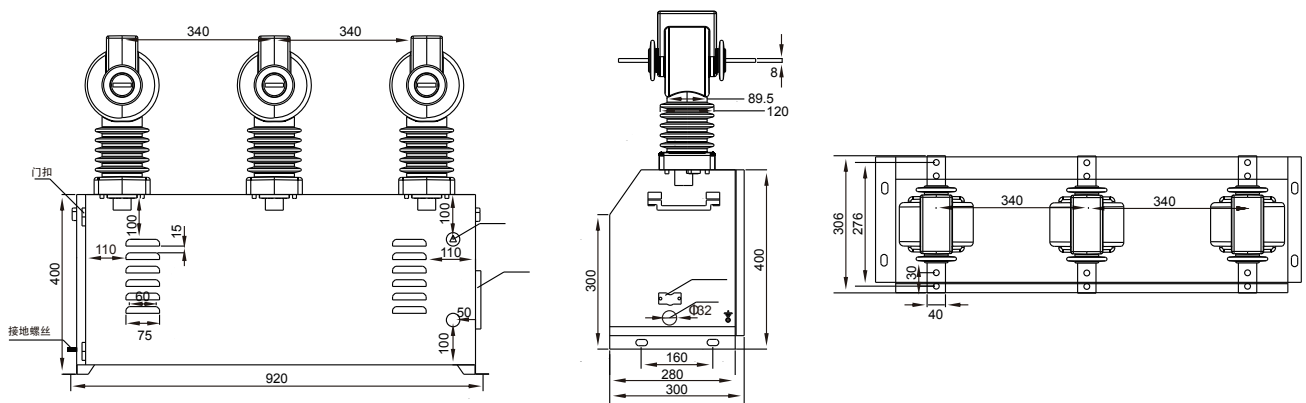
型号 Type	额定电压比 Rated voltage ratio (V)	准确级及三相额定二次输出 (VA) Accuracy class Threephase rated secondary output	极限输出 Max. output (VA)	额定绝缘水平 Rated insulation level (kV)
JLSGWY-6	6000/√3/100 √3	0.2-3 ×20 0.5-3 ×50 1-3 ×80 3-3 ×200	3× 400	7.2/32/60
JLSGWY-10	10000/√3/100√3			12/42/75

10kV high voltage metering box

电流部分参数 Parameter of current part

额定一次电流 Rated primary current (A)	单变比 Single Ratio	额定二次输出 Rated secondary output (VA)			一秒热稳定电流 1s thermal current (kA)	动稳定电流 Rated dynamic current (kA)
		0.2(S)	0.5S	0.5		
5-10-15	5	10	10	15	1.0	2.5
10-15-20	10				1.5	3.75
15-20-30	15				2.4	6.0
20-30-40	20、25				3.0	7.5
30-40-50	30				4.5	11
40-50-75	40				6.5	16.5
50-75-100	50				9	22.5
75-100-150	75				12	30
100-150-200	100				16	40
150-200-300	150				24	60
200-300-400	200、250				32	80
300 400 500	300				45	
400-500-600	400	60				

外形安装尺寸/Overall dimension drawing



接线图/Wiring diagram

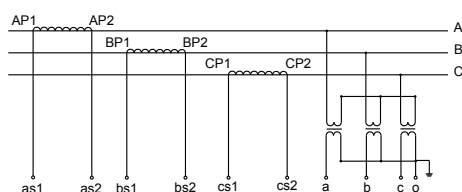


图1 (Figure 1)

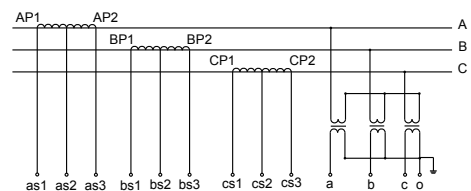


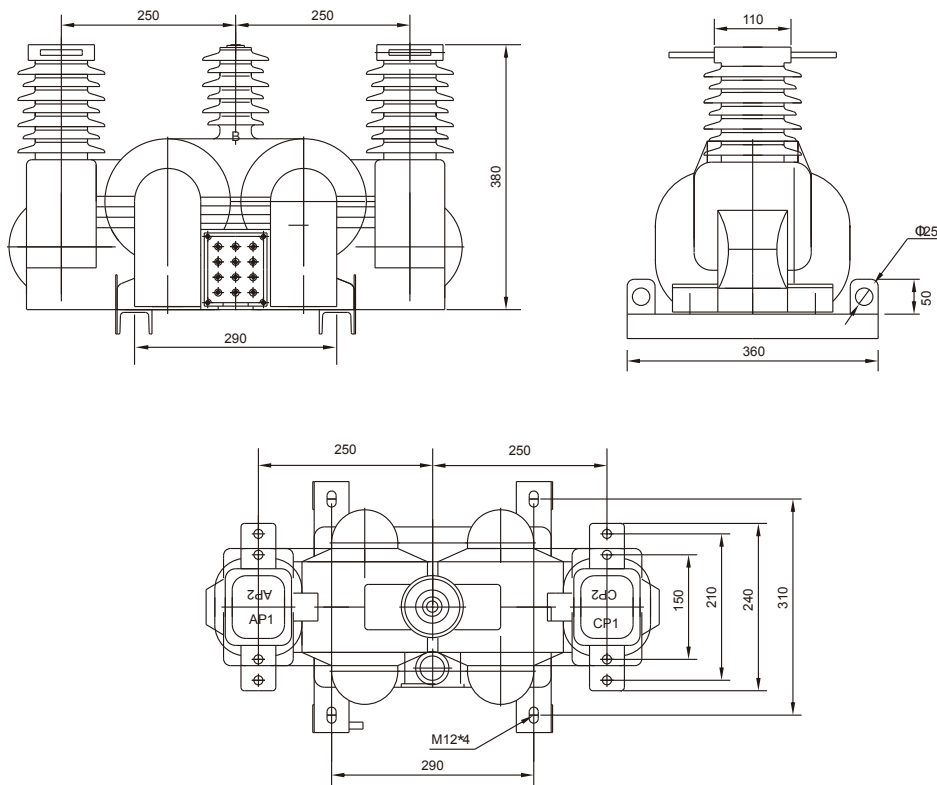
图2 (Figure 2)

10kV high voltage metering box

电压部分参数 Parameter of voltage part

型号 Type	额定电压比 Rated voltage ratio (V)	准确级及三相额定二次输出 (VA) Accuracy class Threephase rated secondary output	极限输出 Max.output (VA)	额定绝缘水平 Rated insulation level (kV)
JLSZV-6	6000/100	0.2-2×20 0.5-2×50	2×400	7.2/32/60
JLSZV-10	10000/100	1-2×80 3-2×200		12/42/75

外形安装尺寸/Overall dimension drawing



接线图/Wiring diagram

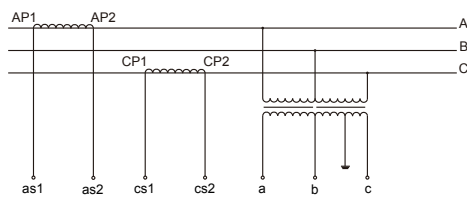


图1 (Figure1)

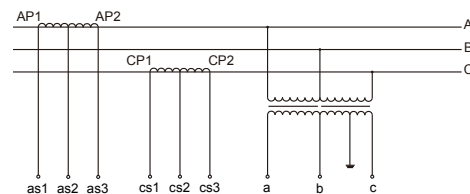


图2 (Figure2)

10kV high voltage metering box



型号含义/Model description

J L S Z Y 6、10

- 额定电压
Rated voltage (kV)
- "Y" 型接线
"Y" Type connection
- 浇注绝缘
Casting insulation
- 三相
Threephase
- 电流互感器
Current transformer
- 电压互感器
Voltage transformer

概述/Description

JLSZY-10整体浇注高压干式组合互感器（整体浇注高压计量箱）是在同类产品的基础上改进而成的，适用于额定频率为50Hz，额定电压10kV及以下的户外交流系统中作有功、无功电能计量，是老式油浸计量箱产品的换代产品。

JLSZY-10整体浇注高压干式组合互感器（整体浇注高压计量箱）采用具有耐电弧、耐老化、抗污秽的户外专用环氧树脂真空浇注而成，外形采用防雨伞裙，表面爬电距离大，防雨、防尘、耐腐蚀、是电网计量升级改造的理想产品。

JLSZY-10 integral casting high voltage dry type combined transformer (integral casting high voltage metering box) is improved on the basis of similar products. It is suitable for rated frequency of 50 Hz and rated voltage 10kV and below outdoor AC system for active and reactive energy measurement, which is the replacement of the old oil metering box products.

JLSZY-10 integral casting high voltage dry type combined transformer (integral casting high voltage metering box) is made of outdoor special epoxy resin vacuum casting with arc resistance, aging resistance and pollution resistance. The appearance of the umbrella skirt, surface creepage distance, rainproof, dust proof, corrosion resistant, is the ideal product of power grid measurement upgrade.

技术参数/Technical data

电流部分参数 Parameter of current part

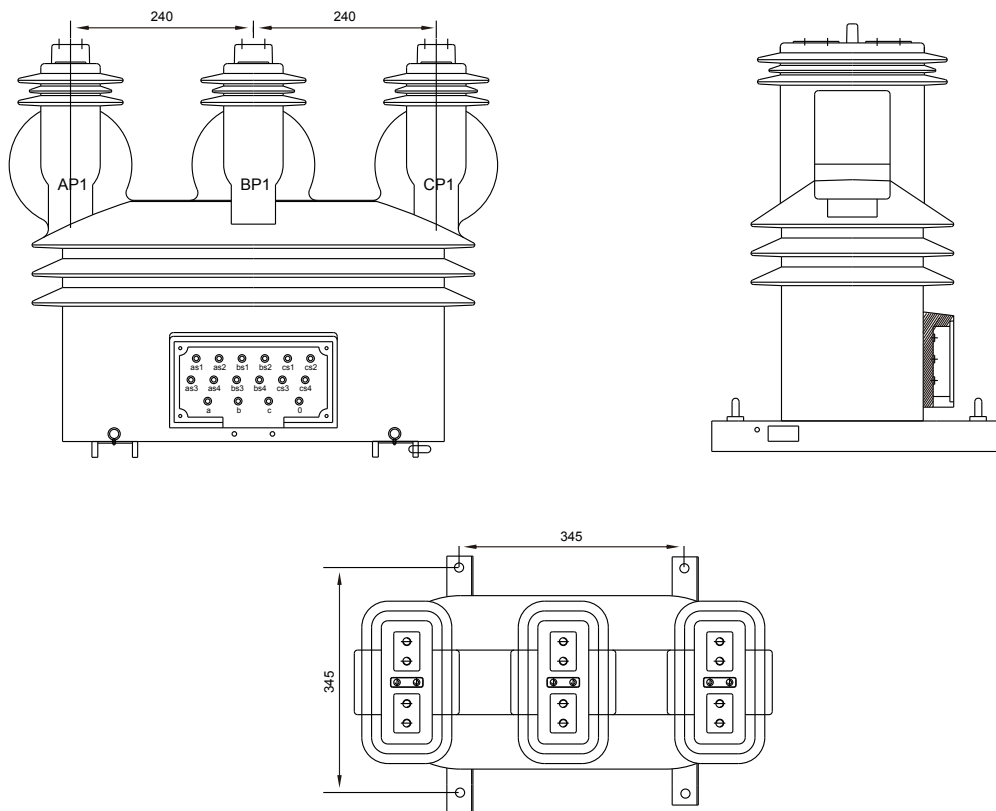
额定一次电流 Rated primary current (A)	单变比 Single Ratio	额定二次输出 Rated secondary output (VA)			一秒热稳定电流 1s thermal current (kA)	动稳定电流 Rated dynamic current (kA)
		0.2(S)	0.5S	0.5		
5-10-15	5	10	10	15	1.0	2.5
10-15-20	10				1.5	3.75
15-20-30	15				2.4	6.0
20-30-40	20 25				3.0	7.5
30-40-50	30				4.5	11
40-50-75	40				6.5	16.5
50-75-100	50				9	22.5
75-100-150	75				12	30
100-150-200	100				16	40
150-200-300	150				24	60
200-300-400	200 250				32	80
300-400-500	300				45	
400-500-600	400				60	
500-600-800	500-1000				80	100
600-800-1000						

10kV high voltage metering box

电压部分参数 Parameter of voltage part

型号 Type	额定电压比 Rated voltage ratio (V)	准确级及三相额定二次输出 (VA) Accuracy class Threephase rated secondary output	极限输出 Max. output (VA)	额定绝缘水平 Rated insulation level (kV)
JLSZY-6	6000 $\sqrt{3}$ /100 $\sqrt{3}$	0.2-3 \times 20 0.5-3 \times 50 1-3 \times 80	2 \times 400	7.2/32/60
JLSZY-10	10000 $\sqrt{3}$ /100 $\sqrt{3}$	3-3 \times 200		12/42/75

外形安装尺寸/Overall dimension drawing



接线图/Wiring diagram

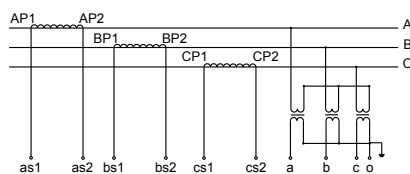


图1 (Figure 1)

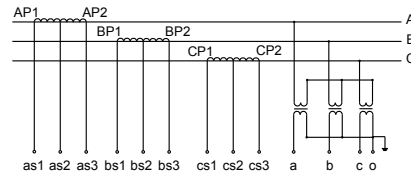
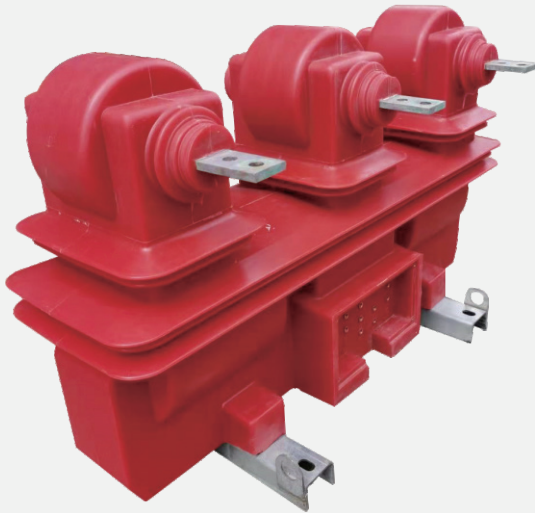
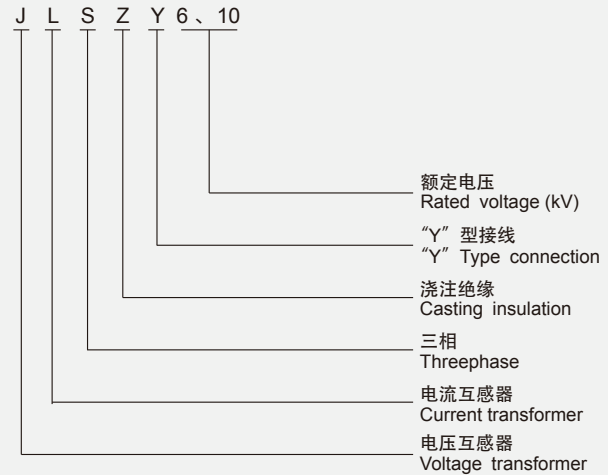


图2 (Figure 2)

10kV high voltage metering box



型号含义/Model description



概述/Description

JLSZY-10整体浇注高压干式组合互感器（整体浇注高压计量箱）是在同类产品的基础上改进而成的，适用于额定频率为50Hz，额定电压10kV及以下的户外交流系统中作有功、无功电能计量，是老式油浸计量箱产品的换代产品。

JLSZY-10整体浇注高压干式组合互感器（整体浇注高压计量箱）采用具有耐电弧、耐老化、抗污秽的户外专用环氧树脂真空浇注而成，外形采用防雨伞裙，表面爬电距离大，防雨、防尘、耐腐蚀、是电网计量升级改造的理想产品。

JLSZY 10 integral casting high voltage dry type combined transformer (integral casting high voltage metering box) is improved on the basis of similar products. It is suitable for rated frequency of 50 Hz and rated voltage 10kV and below outdoor AC system for active and reactive energy measurement, which is the replacement of the old oil metering box products.

JLSZY 10 integral casting high voltage dry type combined transformer (integral casting high voltage metering box) is made of outdoor special epoxy resin vacuum casting with arc resistance, aging resistance and pollution resistance. The appearance of the umbrella skirt, surface creepage distance, rainproof, dust proof, corrosion resistant, is the ideal product of power grid measurement upgrade.

技术参数/Technical date

电流部分参数 Parameter of current part

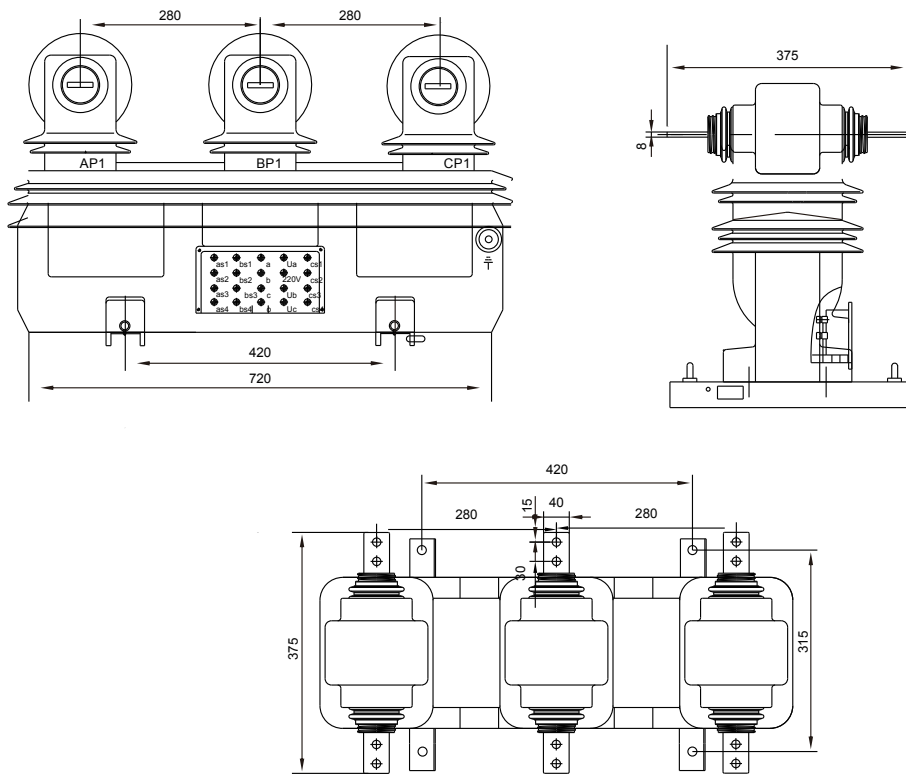
额定一次电流 Rated primary current (A)	单变比 Single Ratio	额定二次输出 Rated secondary output (VA)			一秒热稳定电流 1s thermal current (kA)	动稳定电流 Rated dynamic current (kA)
		0.2(S)	0.5S	0.5		
5-10-15	5	10	10	15	1.0	2.5
10-15-20	10				1.5	3.75
15-20-30	15				2.4	6.0
20-30-40	20 25				3.0	7.5
30-40-50	30				4.5	11
40-50-75	40				6.5	16.5
50-75-100	50				9	22.5
75-100-150	75				12	30
100-150-200	100				16	40
150-200-300	150				24	60
200-300-400	200、250				32	80
300-400-500	300				45	
400-500-600	400				60	
500-600-800	500-1000				80	100
600-800-1000						

10kV high voltage metering box

电压部分参数 Parameter of voltage part

型号 Type	额定电压比 Rated voltage ratio (V)	准确级及三相额定二次输出 (VA) Accuracy class Threephase rated secondary output	极限输出 Max. output (VA)	额定绝缘水平 Rated insulation level (kV)
JLSZY-6	$6000/\sqrt{3}/100/\sqrt{3}$	0.2-3×20 0.5-3×50 1-3×80	3×400	7.2/32/60
JLSZY-10	$10000/\sqrt{3}/100/\sqrt{3}$	3-3×200		12/42/75

外形安装尺寸/Overall dimension drawing



接线图/Wiring diagram

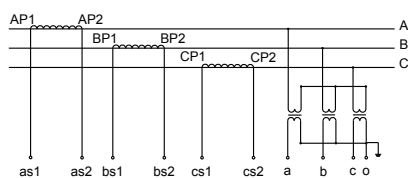


图1 (Figure 1)

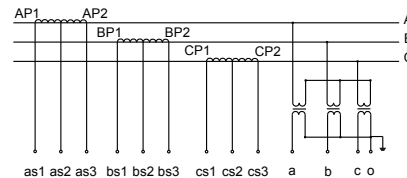
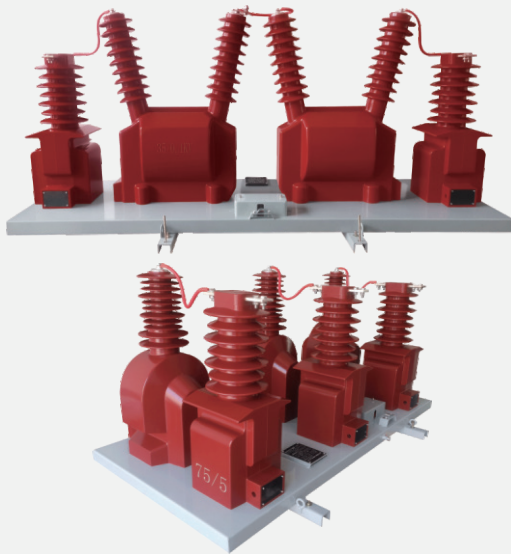
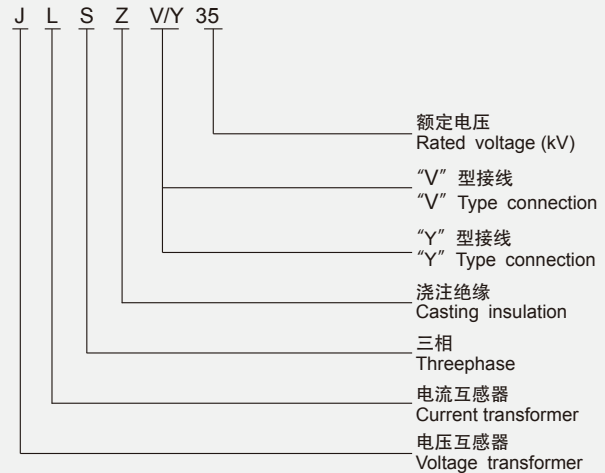


图2 (Figure 2)

10kV high voltage metering box



型号含义/Model description



概述/Description

本型号组合互感器在同类产品的基础上改进而成，适用于额定频率 50Hz, 额定电压35kV的交流电力系统中作有功、无功电能计量，是老式油浸产品的替代品。本型号电流、电压互感器采用具有耐电弧，耐紫外线、耐老化的户外专用环氧树脂真空浇注而成，外形采用防雨伞裙，表面爬电距离大，二次出线端子加有金属保护罩密封，防雨、防尘、耐腐蚀，是城乡电网改造理想的换代产品。

This type of combined transformer is improved on the basis of similar products. It is suitable for active and reactive energy measurement in AC power system with rated frequency of 50 Hz and rated voltage of 35 kV. It is a substitute for old oil immersed products. This type of current and voltage transformer is made of outdoor special epoxy resin vacuum casting with arc resistance, UV resistance and aging resistance. The appearance of the transformer is umbrella proof skirt with large creepage distance on the surface. The secondary outlet terminal is sealed with metal protective cover, which is rainproof, dustproof and corrosion resistant. It is an ideal replacement product for urban and rural power grid transformation.

技术参数/Technical data

电流部分参数 Parameter of current part

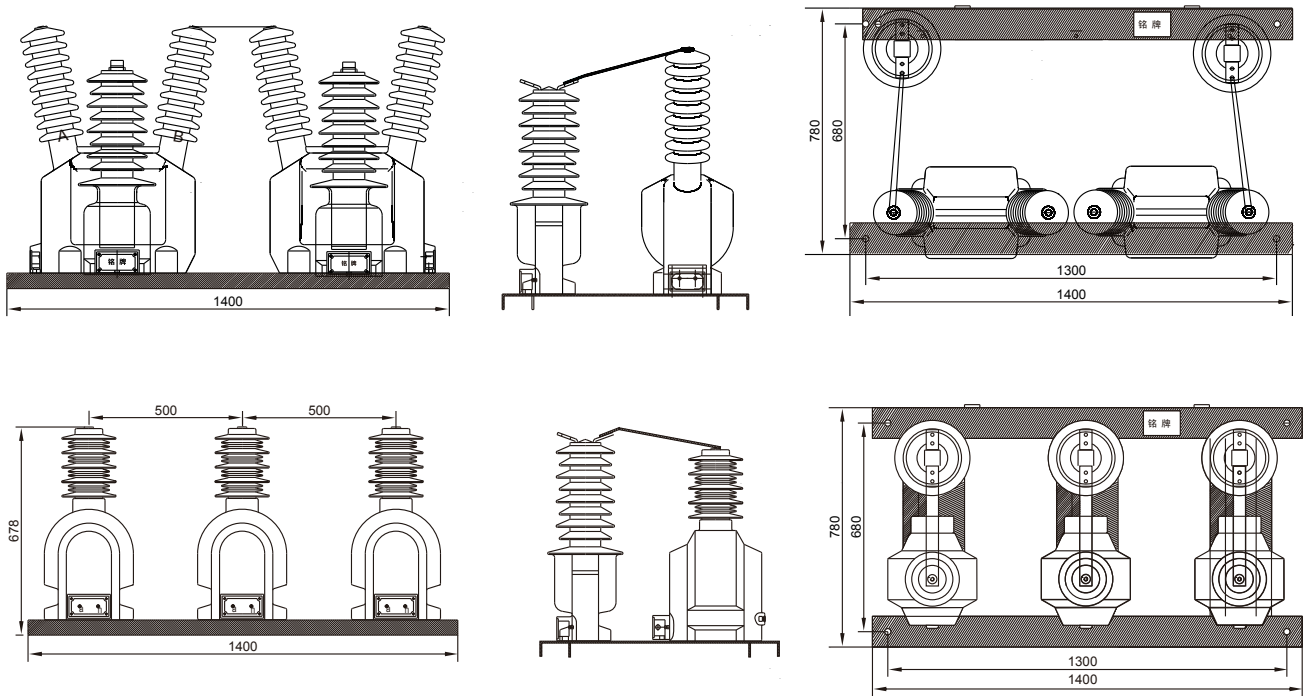
额定一次电流 Rated primary current (A)	单变比 Single Ratio	额定二次输出 Rated secondary output (VA)			一秒热稳定电流 1s thermal current (kA)	动稳定电流 Rated dynamic current (kA)
		0.2(S)	0.5S	0.5		
5-10-15	5	10	10	15	1.0	2.5
10-15-20	10				1.5	3.75
15-20-30	15				2.4	6.0
20-30-40	20 25				3.0	7.5
30-40-50	30				4.5	11
40-50-75	40				6.5	16.5
50-75-100	50				9	22.5
75-100-150	75				12	30
100-150-200	100				16	40
150-200-300	150				24	60
200-300-400	200 250				32	80
300-400-500	300				45	
400-500-600	400				60	
500-600-800	500-1000				80	100
600-800-1000						

10kV high voltage metering box

电压部分参数 Parameter of voltage part

型号 Type	额定电压比 Rated voltage ratio (V)	准确度级及三相额定二次输出 (VA) Accuracy class Three-phase rated secondary output	极限输出 Max.output (VA)	额定绝缘水平 Rated insulation level (kV)
JLSZV-35	3500/100	0.2-3×20 0.5-3×50	2×600	40.5/95/200
JLSZY-35	3500/√3/0.1√3	1-3×80 3-3×200	3×600	

外形安装尺寸/Overall dimension drawing



接线图/Wiring diagram

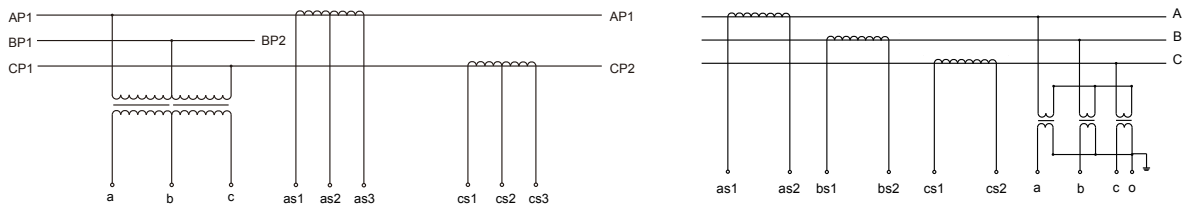


图1 (Figure 1)

图2 (Figure 2)