

GVC11-160/1.5

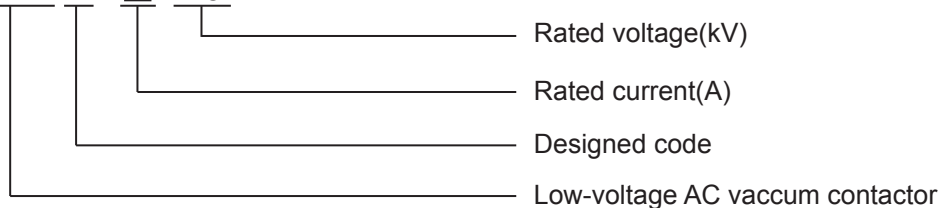


1.Introduction

Vacuum contactors are full closed product adopting new technology, which have the characteristics of high operating voltage, small size, stability, long life, reliability, low pick-up power, low circuit resistance, easier maintenance and so on comparing with the traditional GVC5 contactors.

2.Description

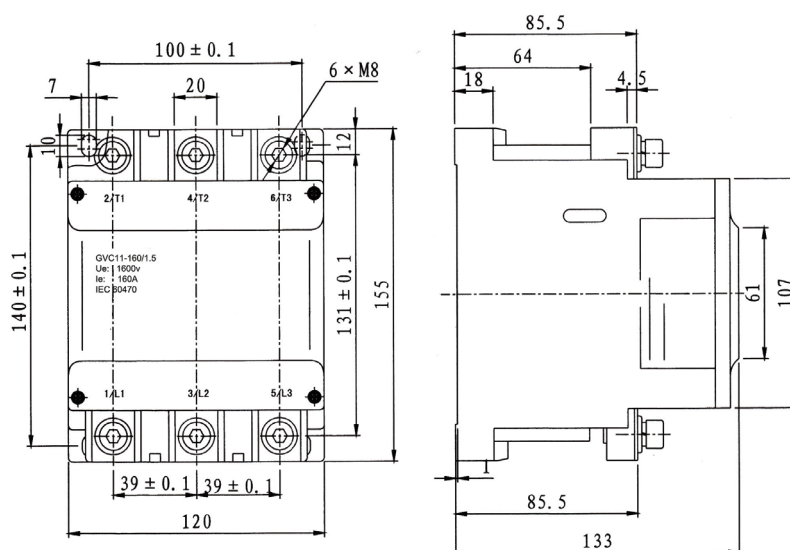
GVC11 - □ / 1.5



3.Main Technical Parameter

Rated working voltage	kV	1.5
Rated working current	A	160
Rated making capability	A/50 times	1600
Rated breaking capability	A/50 times	1280
Limited breaking capacity	A/3 times	1600
Pick-up power	W (transient)	265
Hold power	A	30
Mechanical life	times	1X10 ⁶
Electrical life	times	6X10 ⁴
Weight	kg	3.5
Control power voltage	V(AC)	110, 220
Auxiliary switch	3NO 1NC	
Auxiliary contact capacity	AC-15: Ue:AC380V Ie: 0.7A	
	DC-13: Ue:DC220V Ie: 0.1A	

4.Outline and Installation Dimensions



GVC11-250/1.5



1.Introduction

Vacuum contactors are full closed product adopting new technology, which have the characteristics of high operating voltage, small size, stability, long life, reliability, low pick-up power, low circuit resistance, easier maintenance and so on comparing with the traditional GVC5 contactors.

2.Description

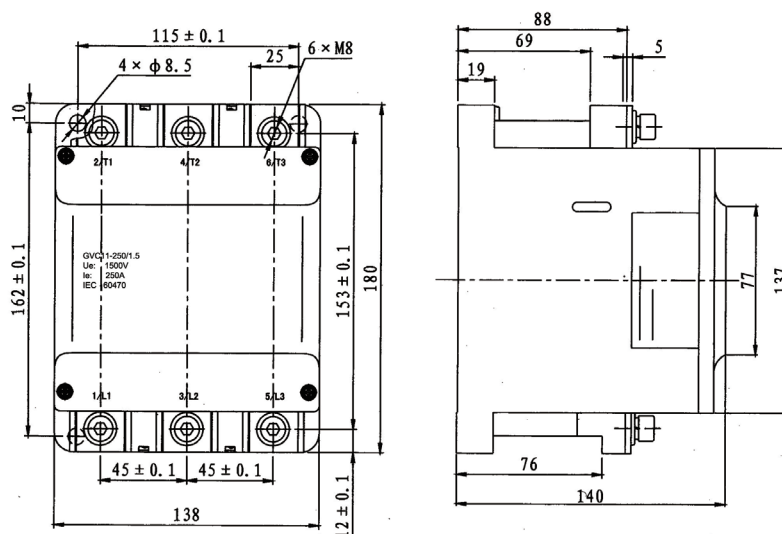
GVC11 - □ / 1.5

Rated voltage(kV)	1.5
Rated current(A)	250
Designed code	□
Low-voltage AC vacuum contactor	

3.Main Technical Parameter

Rated working voltage	kV	1.5
Rated working current	A	250
Rated making capability	A/50 times	2500
Rated breaking capability	A/50 times	2000
Limited breaking capacity	A/3 times	2500
Pick-up power	W (transient)	265
Hold power	A	30
Mechanical life	times	1X10 ⁶
Electrical life	times	6X10 ⁴
Weight	kg	5
Control power voltage	V(AC)	110, 220
Auxiliary switch	3NO 1NC	
Auxiliary contact capacity	AC-15: Ue:AC380V Ie: 0.7A	
	DC-13: Ue:DC220V Ie: 0.1A	

4.Outline and Installation Dimensions



GVC11-400/1.5



1.Introduction

Vacuum contactors are full closed product adopting new technology, which have the characteristics of high operating voltage, small size, stability, long life, reliability, low pick-up power, low circuit resistance, easier maintenance and so on comparing with the traditional GVC5 contactors.

2.Description

GVC11 - □ / 1.5



3.Main Technical Parameter

Rated working voltage	kV	1.5
Rated working current	A	400
Rated making capability	A/50 times	4000
Rated breaking capability	A/50 times	3200
Limited breaking capacity	A/3 times	4500
Pick-up power	W (transient)	342
Hold power	A	38
Mechanical life	times	1X10 ⁶
Electrical life	times	6X10 ⁴
Weight	kg	7.5
Control power voltage	V(AC)	110, 220
Auxiliary switch	4NO 2NC	
Auxiliary contact capacity	AC-15: Ue:AC380V Ie: 0.7A	
	DC-13: Ue:DC220V Ie: 0.1A	

4.Outline and Installation Dimensions

