

1. Safety Instructions

WIFI din rail smart energy meter is designed to measure single phase two wire AC active energy and variable parameter.

The meter have wifi communication,it can use APP for remote reading and control on/off.

It's data communication rules obey the requirment of WIFI 802.11b/g/n.

It is a long life meter with the advantage of high stability,high over load capability , low power loss and small volume.

The meter is manufactured complying with international standard IEC62052-11 on“Electricity metering equipment (AC) General requirements test and test conditions ”and IEC62053-21 on “ Static meters for active energy classes 1.

2. Specification and Technical Parameters

Meter type	Wifi IVAP
Rate frequency	50Hz or 60Hz
Rated current	5(80)A
Rated voltage	120V/220V/230V/240V
Limits voltage range	85~300V(L~N)
Accuracy	Class1
LCD display kwh	999999.99kwh
Starting current	40mA(min measure)
Voltage circuit	<2W/10VA
WIFI	802.1 1b/g/n,only support 2.4GHz nctwork, not support 5GHz network
Operation temperature	-25~70°C
Relay control	Meter relay signal output to control the AC contactor for on/off

(Note:The meter has relay function and no relay function, two Select)

3. Basic Feature:

3.1 Measuring positive & negative active energy with negative energy accumulated into positive energy.

3.2 The meter display total active energy, positive active energy,negative active energy,current,voltage, active power,power factor, frequency.

3.3 Pulse LED indicates working of meter,Pulse output with optical coupling isolation

3.4 Set product button:you can push this button to check the different data display,if you push the setting button last 10s,meter will enter into the status of waiting for WIFI distribution network .if you want to reset status of WIFI distribution network,you also can push the setting button last 10s.



3.5 APP can display total active energy, positive active energy,negative active energy,current,voltage, active power,power factor, frequency.

3.6 APP on/off operation

3.7 Installation:The meter can be installed on a 35 mm DIN rail

3.8 The meter should be install in the water proof box indoor or outdoor.the meter's box should be fixed on strong and flame-resistant wall with a recommended height of about 1.8m,where there is no corrosive gas around.

3.9 The meter should be install fully in accordance with connection diagram on the terminalcover,it is better to use copper as the leading wire for connection.All screws should betightened.

4.0  WIFI led indication,if you push the setting button last 10s,the WIFI led will flash 1s interval after the LCD display“”,its means meter enter into the status of waiting for WIFI distribution network.if WIFI led light on all time,it means meter connect the WIFI successfully.

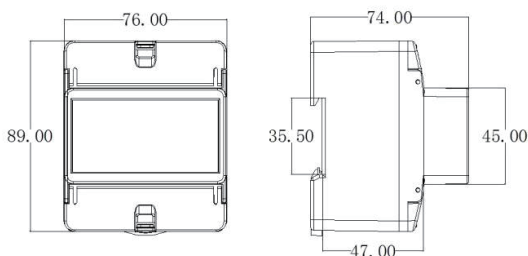
4.1 Impulse led indication:it will flash green color with different speed according the current load of the meter.

4.2 Relay indication:indication light off means relay switch on,indication light on means relay switch off.

4. Working principles

Single phase voltage and current are sampled from respective sampling circuit andtransformed into suitable signal,which is carried into integrated circuit,then the meter outputpulse signal in positive appropriation to measured power to drive LCD counter to realize energymeasurement.The meter has energy pulse output for testing with pulse width of 80+20ms

5. Product outline drawing and structure drawing



	Terminal	Notice
	1/2	L Input/output
	3/4	N Input/output
	5/6	Pulse output
	9/10	RS485 port

Display item

	INFORMATION	LCD DISPLAY		INFORMATION	
01	Meter serial 12digil	H 000000	06	Voltage V	000.00
		L 000000	07	Current A	000.00
02	Impulse imp/kWh	1000imp/kWh	08	Active power W	00000.0
03	Total energy kWh	000000.00	09	Power factor COSφ	0.00
04	Active energy kWh	000000.00	10	Frequency Hz	00.00
05	Reactive energy kWh	000000.00			

6 Warranty period

Within 12 months from the day of selling and provided that users operate correctly according to the requirement of the user's manual, if the meter doesn't reach its technical specification.It can be repaired or replaced in free charge by the manufacturer.

APP OPERATION INSTRUCTION

1. Please download the “SMARTLIFE” software from google play or App store.

2. Meter input power

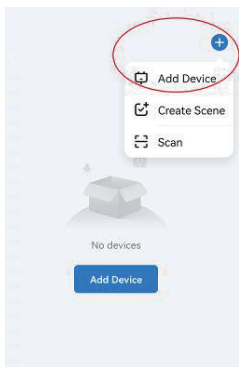
When the meter power on, you can push the setting button last 10s, meter enter into the status of waiting for WIFI distribution network and the WIFI led will flash 1s interval. It means meter enter into waiting for WIFI distribution network.

3. Add device

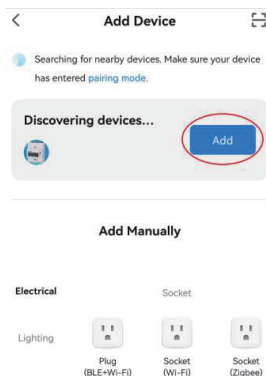
Please check firstly that your telephone have connected the available WIFI network, then click the “add device” button. If you open the Bluetooth, it will automatic find the meter which is waiting for adding.



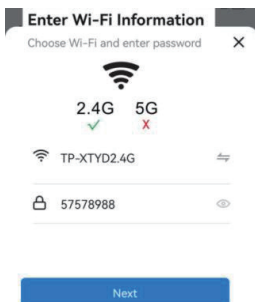
3.1



3.2

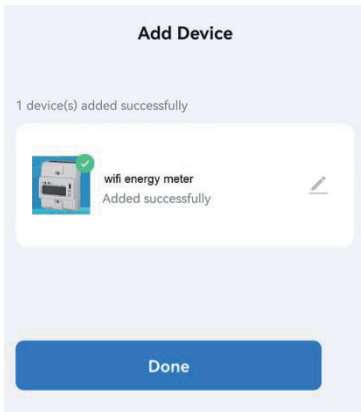


3.3



GSM5188

3.4



3.5

