

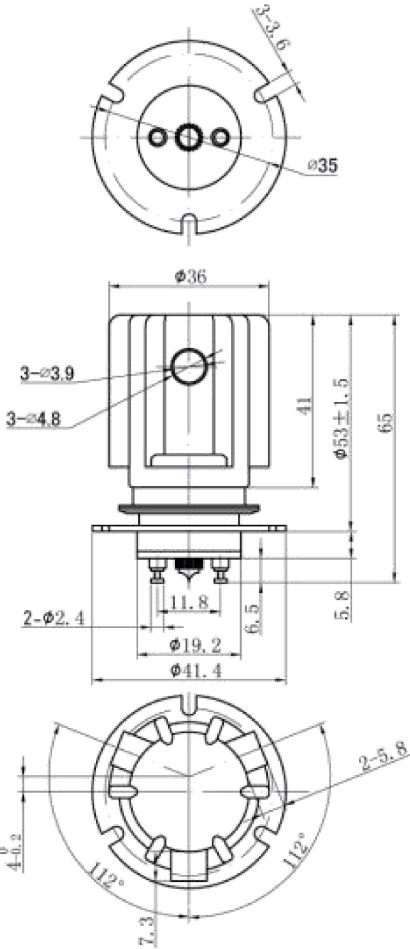
Product Features

- SF-6 gas-filled for power switching on the "make"
- Long load life in capacitive discharge applications
- Recommended for ESD testing and safety interlock applications
- Consult factory for load switching applications

Product Specification		Units	GHR-18-SF
Contact Form			C
Contact Arrangement			SPDT
Test Voltage, (kV, Peak), Test Max., Contacts & to Base (15 μ A Leakage Max., dc or 60Hz)		KV Peak	28
Rated Operating Voltage, (kV, Peak), Contacts & to Base (15 μ A Leakage Max.)	DC or 60Hz	KV Peak	25
	2.5MHz	KV Peak	-
	16MHz	KV Peak	-
	32MHz	KV Peak	-
Continuous Current, Carry Max	DC or 60Hz	Amps	12
	2.5MHz	Amps	-
	16MHz	Amps	-
	32MHz	Amps	-
Coil Hi -Pot (V RMS, 60 Hz)		V	500
Capacitance	Across Open Contacts	pF	0.5
	Contacts to Ground	pF	1
Resistance, Contact Max @ 1A, 28Vdc		Ω	1.0
Operate Time, Max		ms	18
Release Time, Max		ms	12
Operating Temperature Ambient		$^{\circ}$ C	-55~+125
Shock, 1/2 Sine 11ms (Peak)		G' s	50
Vibration, Sine (10-2000 Hz Peak)		G' s	10
Mechanical Life		Cycles	1 Million
Weight		g	110

COIL RATINGS			
Nominal, Volts dc	26.5	24	12
Pick-up, Volts dc,Max	18	18	9
Drop-Out, Volts dc,Min	1-10	1-10	0.5-5
Coil Resistance ($\Omega \pm 10\%$)	125	125	30
※ Ratings listed are for 25°C,sea level conditions			

※ For hot switching (under load) applications, consult the manufacturer.
※ When ordering relays, specify the model with coil voltage suffix; the voltage marking is located on the pole piece near coil terminals, not on the relay housing.



Product Nomenclature

GHR-18	S	F	-24VDC
Model			
High volrage soldering terminal S- soldring			
Amounting F = Flange mount			
			Coil voltage 12VDC=12VDC 24VDC=24VDC 26.5VDC=26.5VDC 110VDC=110VDC 220VDC=220VDC