

GDZ08M

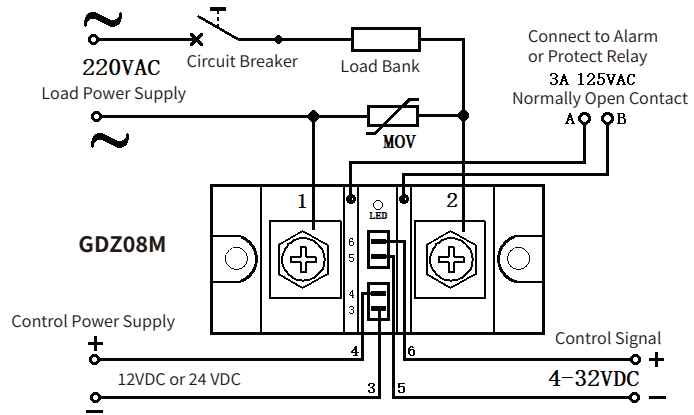
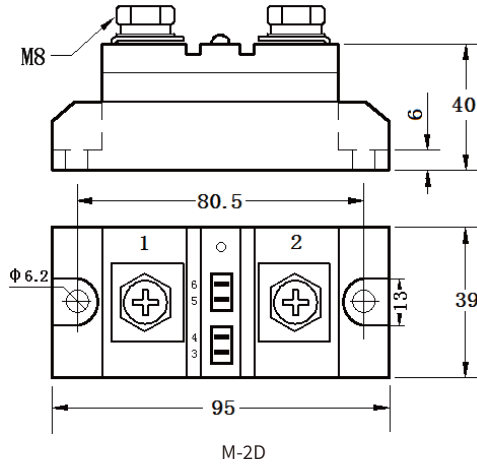
01

- Photoelectric isolation between input and output, insulation voltage greater than 2500V.
- Control signal compatible with TTL and PLC logic interfaces.
- Dual-color LED indicates normal operation and faulty load status.
- Solid-state contactless switching output, fast switching speed, no sparking or arcing.
- Built-in overtemperature automatic protection, with alerts for abnormalities in the solid-state switch or load.
- Solid encapsulation, waterproof, corrosion-resistant, and shockproof, ensuring reliable and durable switching with easy installation.
- In addition to the functions of the solid-state relay, this product can automatically detect whether the solid-state switch is functional or if the external load is open-circuit, issuing a warning signal in case of abnormalities.

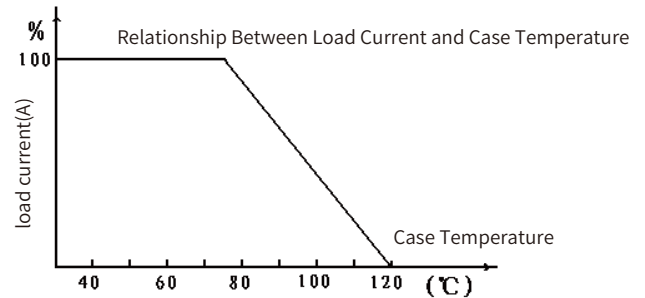
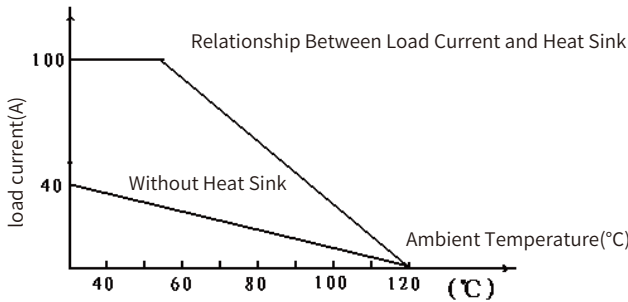


Parameter		Model	GDZ08M
Input	Control Power Supply		12VDC/0.3W-24VDC/0.7W
	Control Signal		4~32 VDC
	Control Current		≤ 28 mA
	Status Indication		Green light on: Normal operation Red light on: SSR failure or load abnormality
	Switching Time		≥10 mS
Output	Load Voltage		24~240VAC 44~440VAC
	Max. Current		60、80、90、100、120、150、200、300、400、500A
	On-state Voltage Drop		≤1.4-1.8 V
	Off-state Voltage		≥800V ≥1500V
	Alarm Signal		3A 125VAC (Contacts A and B: Normally open under normal condition; closed under fault condition)
	Isolation Voltage		≥ 2000V
Performance	Insulation Voltage		≥ 2500V
	Operating Temperature		-30 ~ 90 °C
	Power Frequency		50/60 HZ
	Heat Dissipation		≥20A Heatsink required, ≥120A Additional forced air cooling required
	Load Current Safety Factor		Resistive load: 2-3 times; Inductive load: 3-4 times
	Dimensions(Code)		95×39×40 (M-2D)

Dimensions. Installation Wiring Diagram: (Unit: mm)



Temperature Curve Graph:



Product Safety Usage Notes:

- Before applying the control signal, if the red light is on and the auxiliary contacts (points A and B) change from normally open to normally closed, check whether the circuit heater is open or the solid-state relay is damaged. When the green light is on, the circuit is fully operational, and the control signal can be applied to start the device. If flickering of the red and green lights is observed during operation (while applying pulse-width modulated signals), it indicates an abnormality, and the device must be stopped for inspection.
- When selecting a product, appropriate current derating should be applied based on the nature of the load. (For resistive loads: 2-3 times the load current. For inductive or capacitive loads: 3-4 times the load current.)
- To prevent damage to the solid-state switch due to load short circuits, connect a fast-acting circuit breaker, fast-blow fuse, or select the GDZ08ML series overcurrent-protected solid-state switch in series with the load circuit, matching the load current rating.
- For inductive loads, connect a varistor across the output terminals to protect against transient high voltages that could damage internal components.
- If intermittent load connection is observed during use, it may be caused by overheating protection due to poor heat dissipation of the solid-state switch. Check for loose mounting screws, fan failure, or insufficient heat sink size.
- During installation, ensure that the contact surface between the heat sink and the product is flat and smooth. Apply a layer of thermal grease, and securely fasten the screws with flat washers and spring washers using a symmetrical tightening method.