

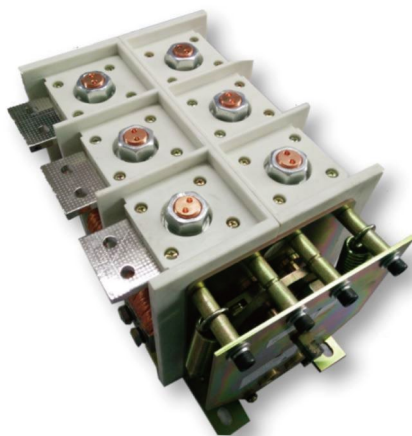
## Overview

GHZ Series Three-Phase AC high-voltage vacuum isolation phase change switch is purely manually operated. This three-phase AC high-voltage vacuum isolation phase change switch is designed for use in power systems with AC 50Hz, a main circuit rated operational voltage of up to 1.14/3.6kV, and a rated operational current of up to 800A. It serves for upstream isolation of starters, phase changing, and can break the circuit under specified conditions. It features a compact size, simple structure, smooth and light operation, small contact gap, short arcing time, and high breaking capacity.

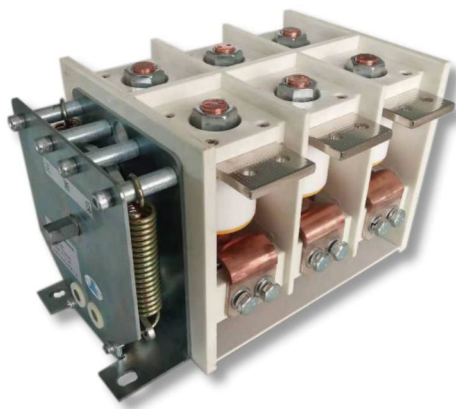
## Product Display



GHZ-630/1.14



GHZ-800/1.14



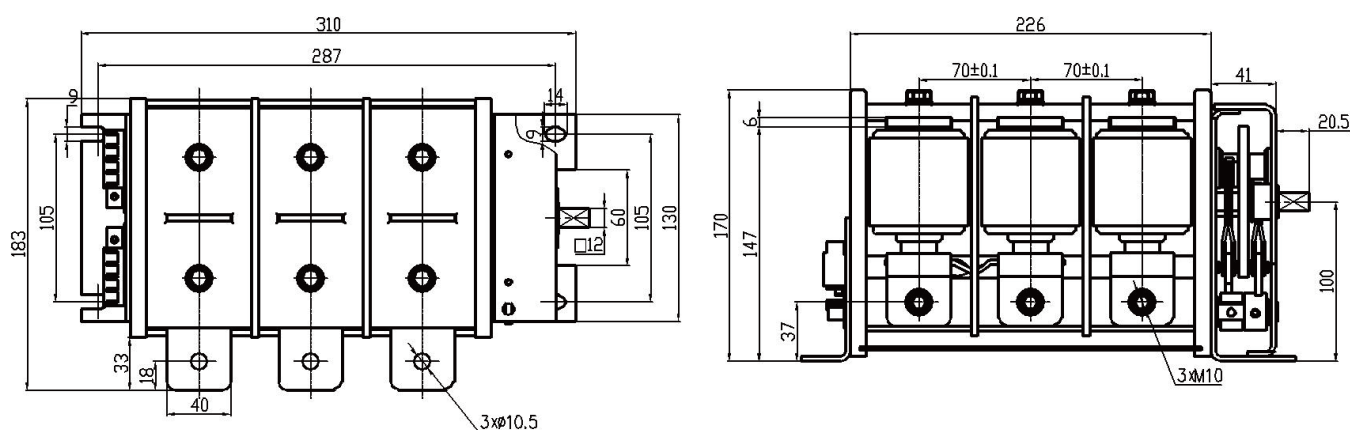
GHZ2-800/1.14



GHZ3-800/3.6

**Technical Specification**

Rated Current	A	630
Rated Voltage	kV	1.14
Rated short circuit breaking current	kA	5
Rated short time withstand current (2S)	kA	6.3
Rated peak withstand current	kA	15
Rated short time frequency withstand voltage	kV	4.2
Rated short time frequency withstand voltage (fracture)	kV	10
Mechanical Life	times	6000
Weight	Kg	19
Auxiliary switch	Auxiliary contact: 1 NO and 1NC On each positive and negative phase	
Auxiliary contact capacity	AC-15: Ue: AC380V Ie:0.7A DC-13: Ue: DC220V Ie:0.1A	

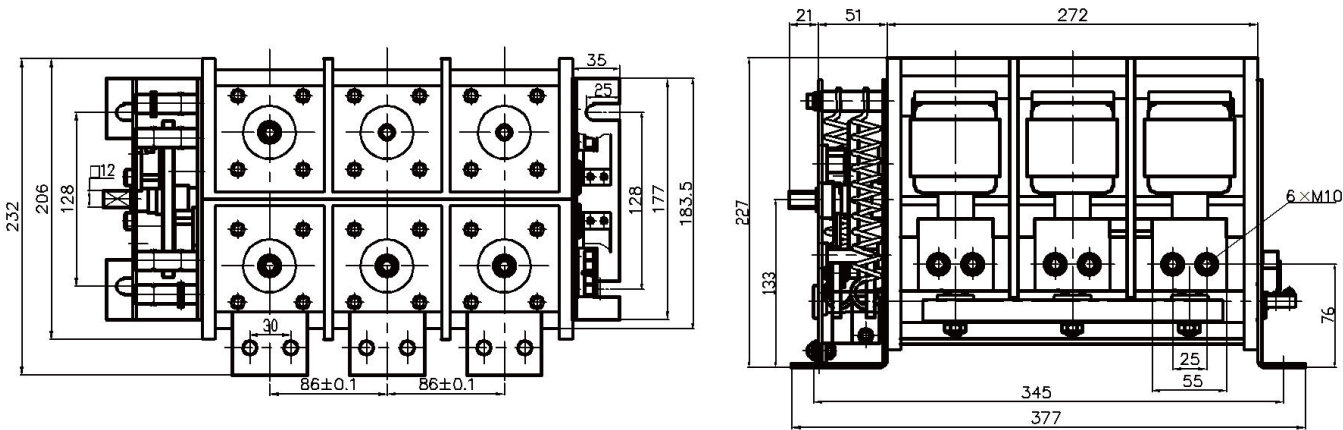
**Outline And Mounting Dimension**


Note: The left/right direction of the main circuit in and out lines can be changed according to user requirements.

Technical Specification

Rated Current	A	800
Rated Voltage	kV	1.14
Rated short circuit breaking current	kA	6.3
Rated short time withstand current (2S)	kA	8
Rated peak withstand current	kA	20
Rated short time frequency withstand voltage	kV	4.2
Rated short time frequency withstand voltage (fracture)	kV	10
Mechanical Life	times	6000
Weight	Kg	23
Auxiliary switch	Auxiliary contact: 2 NO and 2NC On each positive and negative phase	
Auxiliary contact capacity	AC-15: Ue: AC380V Ie:1A DC-13: Ue: DC250V Ie:0.8A	

Outline And Mounting Dimension



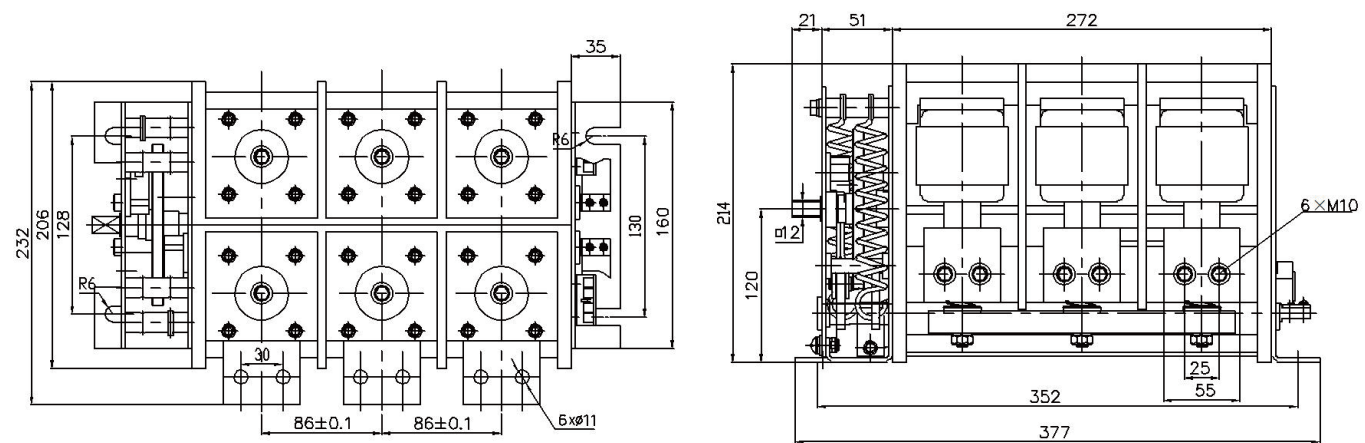
Note: The left/right direction of the main circuit in and out lines can be changed according to user requirements.

Technical Specification

11

Rated Current	A	800
Rated Voltage	kV	1.14
Rated short circuit breaking current	kA	6.3
Rated short time withstand current (2S)	kA	8
Rated peak withstand current	kA	20
Rated short time frequency withstand voltage	kV	4.2
Rated short time frequency withstand voltage (fracture)	kV	10
Mechanical Life	times	6000
Weight	Kg	23
Auxiliary switch	Auxiliary contact: 2 NO and 2NC On each positive and negative phase	
Auxiliary contact capacity	AC-15: Ue: AC380V Ie:1A DC-13: Ue: DC250V Ie:0.8A	

Outline And Mounting Dimension

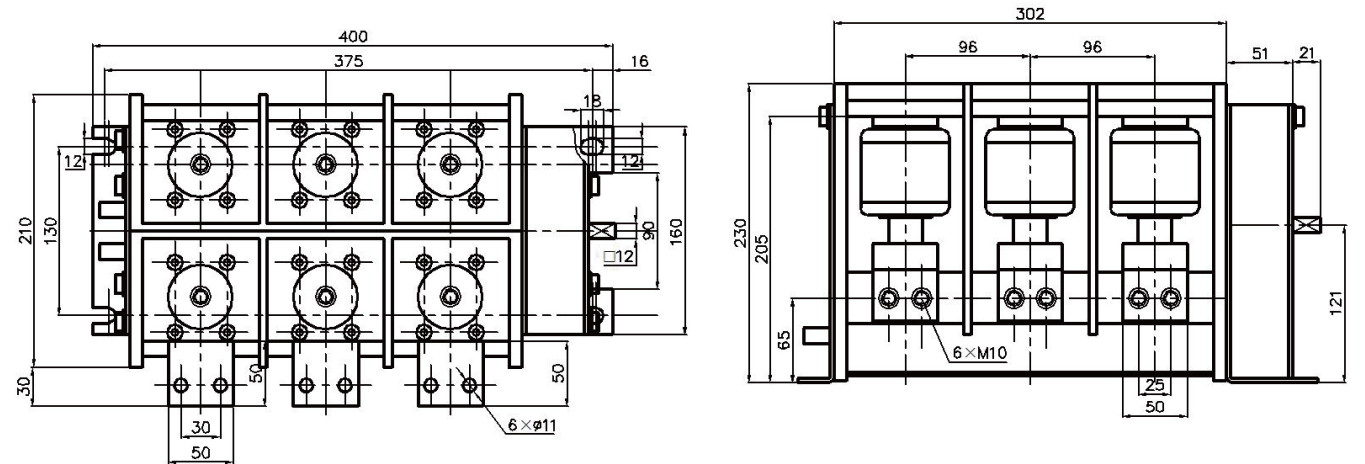


Note: The left/right direction of the main circuit in and out lines can be changed according to user requirements.

Technical Specification

Rated Current	A	800
Rated Voltage	kV	3.6
Rated short circuit breaking current	kA	6.3
Rated short time withstand current (2S)	kA	8
Rated peak withstand current	kA	20
Rated short time frequency withstand voltage	kV	25
Rated short time frequency withstand voltage (fracture)	kV	27
Mechanical Life	times	6000
Weight	Kg	23
Auxiliary switch	Auxiliary contact: 2 NO and 2NC On each positive and negative phase	
Auxiliary contact capacity	AC-15: Ue: AC380V Ie:1A DC-13: Ue: DC250V Ie:0.8A	

Outline And Mounting Dimension



Note: The left/right direction of the main circuit in and out lines can be changed according to user requirements.