

Overview

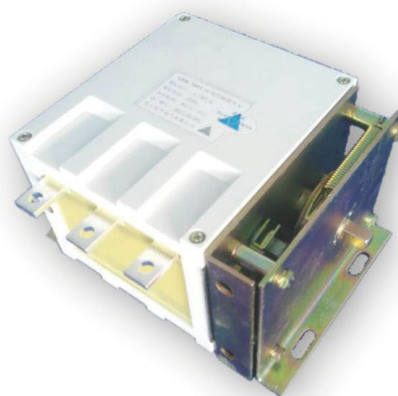
GHK Series Three-Phase AC isolation phase change switch is designed for use in power systems with AC 50Hz, a main circuit rated operational voltage of up to 1.14kV, and a rated operational current of up to 500A. It serves for upstream isolation of starters, phase changing, and can break the circuit under specified conditions. It features a compact design, simple construction, smooth operation, and possesses certain breaking capacity. A clearly visible isolation gap is provided.

04

Product Display



GHK-200/1.14



GHK-200/1.14



GHK-400/1.14

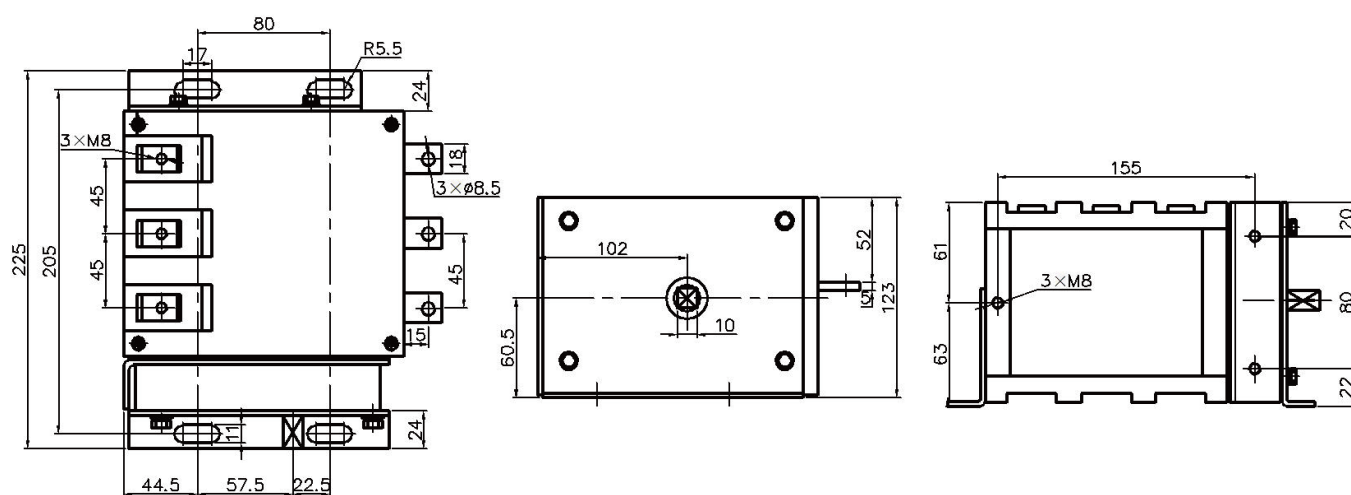


GHK-500/1.14

Technical Specification

Rated Current	A	200
Rated Voltage	kV	1.14
Rated breaking current	A	600
Rated short time withstand current (2S)	kA	1.6
Rated peak withstand current	kA	4
Rated short time frequency withstand voltage	kV	4.2
Rated BIL withstand voltage	kV	10
Rated short time frequency withstand voltage (fracture)	kV	4.2
Rated BIL withstand voltage (fracture)	kV	10
Mechanical Life	times	6000
Weight	Kg	7
Auxiliary switch	1NO1NC	
Auxiliary contact capacity	AC-15: Ue: AC380V Ie:0.7A DC-13: Ue: DC220V Ie:0.1A	

Outline And Mounting Dimension

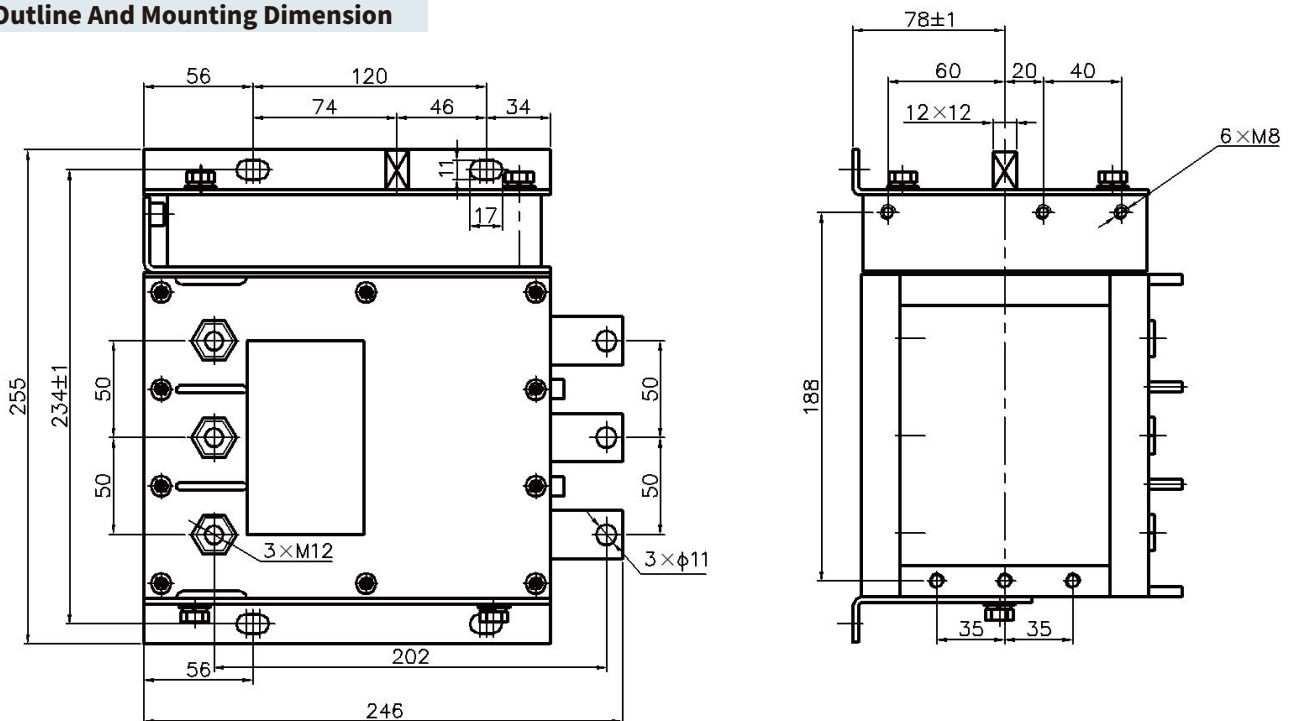


Technical Specification

Rated Current	A	400
Rated Voltage	kV	1.14
Rated breaking current	A	1200
Rated short time withstand current (2S)	kA	3.2
Rated peak withstand current	kA	8
Rated short time frequency withstand voltage	kV	4.2
Rated BIL withstand voltage	kV	10
Rated short time frequency withstand voltage (fracture)	kV	4.2
Rated BIL withstand voltage (fracture)	kV	10
Mechanical Life	times	6000
Weight	Kg	12
Auxiliary switch	1NO1NC	
Auxiliary contact capacity	AC-15: Ue: AC380V Ie:0.7A DC-13: Ue: DC220V Ie:0.1A	

06

Outline And Mounting Dimension



Technical Specification

Rated Current	A	500
Rated Voltage	kV	1.14
Rated breaking current	A	1500
Rated short time withstand current (2S)	kA	4
Rated peak withstand current	kA	10
Rated short time frequency withstand voltage	kV	4.2
Rated BIL withstand voltage	kV	10
Rated short time frequency withstand voltage (fracture)	kV	4.2
Rated BIL withstand voltage (fracture)	kV	10
Mechanical Life	times	6000
Weight	Kg	12
Auxiliary switch	1NO1NC	
Auxiliary contact capacity	AC-15: Ue: AC380V Ie:0.7A DC-13: Ue: DC220V Ie:0.1A	

Outline And Mounting Dimension

