

Cable Lug

1

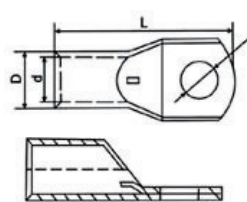
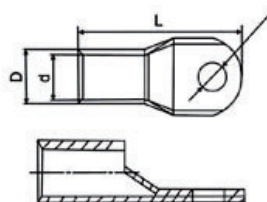


Cable lug

- These products are suitable for the connection of copper conductors low voltage.
- They are manufactured of copper tube. It has at least 99.9% purity and is finished with in.
- The lugs have a viewing window to check conductor location.

Type	Φ	D	d	L
JM(JGK)-1.5	Φ 4.2, Φ 5.2, Φ 6.5	3.35	1.9	18
JM(JGK)-2.5	Φ 4.2, Φ 5.2, Φ 6.5	4	2.6	20
JM(JGK)-4	Φ 5.2, Φ 6.5	4.5	3.2	22
JM(JGK)-6	Φ 5.2, Φ 6.5, Φ 8.4	5.3	3.7	24
JM(JGK)-10	Φ 6.5, Φ 8.4, Φ 10.3	6.3	4.5	27
JM(JGK)-16	Φ 6.5, Φ 8.4, Φ 10.5	7.5	5.7	30
JM(JGK)-25	Φ 6.5, Φ 8.4, Φ 10.5	9	7.2	34
JM(JGK)-35	Φ 6.5, Φ 8.4, Φ 10.3, Φ 13	10.8	8.5	38
JM(JGK)-50	Φ 6.5, Φ 8.4, Φ 10.3, Φ 13	12.5	9.8	44
JM(JGK)-70	Φ 8.5, Φ 10.3, Φ 13	14.5	11.5	50
JM(JGK)-95	Φ 10.3, Φ 13	17	13.7	57
JM(JGK)-120	Φ 13, Φ 14.7, Φ 17	19	15	63.5
JM(JGK)-150	Φ 13, Φ 14.7, Φ 17	21	16.7	71
JM(JGK)-185	Φ 13, Φ 17	23	18.5	79
JM(JGK)-240	Φ 14.7, Φ 17, Φ 21	26	21	92
JM(JGK)-300	Φ 17, Φ 21	30	24	102
JM(JGK)-400	Φ 17, Φ 21	34	27	113
JM(JGK)-500	Φ 17, Φ 21	38	30	123
JM(JGK)-630	Φ 21, Φ 23	45	35	135
JM(JGK)-800	Φ 23	50	39	170
JM(JGK)-1000	Φ 23	56	44	200
JM(JGY)-1.5	Φ 4.2, Φ 5.2, Φ 6.5	3.35	1.9	18.5
JM(JGY)-2.5	Φ 4.2, Φ 5.2, Φ 6.5	4	2.6	20.5
JM(JGY)-4	Φ 5.2, Φ 6.5	4.5	3.2	22.5
JM(JGY)-6	Φ 5.2, Φ 6.5, Φ 8.4	5.3	3.7	24.5
JM(JGY)-10	Φ 6.5, Φ 8.4, Φ 10.3	6.3	4.5	25.5
JM(JGY)-16	Φ 6.5, Φ 8.4, Φ 10.5	7.5	5.7	30.5
JM(JGY)-25	Φ 6.5, Φ 8.4, Φ 10.5	9	7.2	34.5
JM(JGY)-35	Φ 6.5, Φ 8.4, Φ 10.3, Φ 13	10.8	8.5	38.5
JM(JGY)-50	Φ 6.5, Φ 8.4, Φ 10.3, Φ 13	12.5	9.8	44.5
JM(JGY)-70	Φ 8.5, Φ 10.3, Φ 13	14.5	11.5	51
JM(JGY)-95	Φ 10.3, Φ 13	17	13.7	58
JM(JGY)-120	Φ 13, Φ 14.7, Φ 17	19	15	65.5
JM(JGY)-150	Φ 13, Φ 14.7, Φ 17	21	16.7	72.5
JM(JGY)-185	Φ 13, Φ 17	23	18.5	81
JM(JGY)-240	Φ 14.7, Φ 17, Φ 21	26	21	94
JM(JGY)-300	Φ 17, Φ 21	30	24	104.5
JM(JGY)-400	Φ 17, Φ 21	34	27	115.5
JM(JGY)-500	Φ 17, Φ 21	38	30	126.5
JM(JGY)-630	Φ 21, Φ 23	45	35	139.5
JM(JGY)-800	Φ 23	50	39	
JM(JGY)-1000	Φ 23	56	44	

Dimension



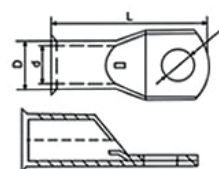
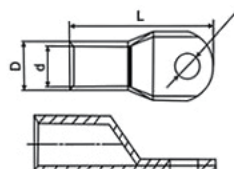
Cable lug

- These products are suitable for the connection of copper conductors in low voltage.
- They are manufactured of copper tube. It has at least 99.9% purity and is finished with in
- JGA lugs don't have a viewing window.
- JGB lugs have a viewing window to check conductor location. And it's bell mouth is specifically designed to accommodate fine strand flexible conductors.
- Because fine stranded cables have a larger diameter than normal cables. And they tend to splay out after stripping
- JGB lugs which funnel the strands into the lug and make conductor insertion easy.



Type	Φ	D	d	L
JM(JGA)-1.5	Φ 4.2, Φ 5.2, Φ 6.5	3.35	1.9	18
JM(JGA)-2.5	Φ 4.2, Φ 5.2, Φ 6.5	4	2.6	20
JM(JGA)-4	Φ 5.2, Φ 6.5	4.5	3.2	22
JM(JGA)-6	Φ 5.2, Φ 6.5, Φ 8.4	5.3	3.7	24
JM(JGA)-10	Φ 6.5, Φ 8.4, Φ 10.3	6.3	4.5	27
JM(JGA)-16	Φ 6.5, Φ 8.4, Φ 10.5	7.5	5.7	30
JM(JGA)-25	Φ 6.5, Φ 8.4, Φ 10.5	9	7.2	34
JM(JGA)-35	Φ 6.5, Φ 8.4, Φ 10.5, Φ 13	10.7	8.5	38
JM(JGA)-50	Φ 6.5, Φ 8.4, Φ 10.5, Φ 13	12.5	9.8	44
JM(JGA)-70	Φ 8.5, Φ 10.5, Φ 13	14.5	11.5	50
JM(JGA)-95	Φ 10.5, Φ 13	17	13.7	57
JM(JGA)-120	Φ 13, Φ 14.7, Φ 17	19	15	63.5
JM(JGA)-150	Φ 13, Φ 14.7, Φ 17	21	16.7	71
JM(JGA)-185	Φ 13, Φ 17	23	18.5	79
JM(JGA)-240	Φ 14.7, Φ 17, Φ 21	26	21	92
JM(JGA)-300	Φ 17, Φ 21	30	24	102
JM(JGA)-400	Φ 17, Φ 21	34	27	113
JM(JGA)-500	Φ 17, 21	38	30	123
JM(JGA)-630	Φ 21, Φ 23	45	35	135
JM(JGA)-800	Φ 23	50	39	170
JM(JGA)-1000	Φ 23	56	44	200
JM(JGB)-1.5	Φ 4.2, Φ 5.2, Φ 6.5	3.35	1.9	18.5
JM(JGB)-2.5	Φ 4.2, Φ 5.2, Φ 6.5	4	2.6	20.5
JM(JGB)-4	Φ 5.2, Φ 6.5	4.5	3.2	22.5
JM(JGB)-6	Φ 5.2, Φ 6.5, Φ 8.4	5.3	3.7	24.5
JM(JGB)-10	Φ 6.5, Φ 8.4, Φ 10.3	6.3	4.5	25.5
JM(JGB)-16	Φ 6.5, Φ 8.4, Φ 10.5	7.5	5.7	30.5
JM(JGB)-25	Φ 6.5, Φ 8.4, Φ 10.5	9	7.2	34.5
JM(JGB)-35	Φ 6.5, Φ 8.5, Φ 10.5, Φ 13	10.8	8.5	38.5
JM(JGB)-50	Φ 6.5, Φ 8.5, Φ 10.5, Φ 13	12.5	9.8	44.5
JM(JGB)-70	Φ 8.5, Φ 10.5, Φ 13	14.5	11.5	51
JM(JGB)-95	Φ 10.5, Φ 13	17	13.7	58
JM(JGB)-120	Φ 13, Φ 14.7, Φ 17	19	15	65.5
JM(JGB)-150	Φ 13, Φ 14.7, Φ 17	21	16.7	72.5
JM(JGB)-185	Φ 13, Φ 17	23	18.5	81
JM(JGB)-240	Φ 17, Φ 21	26	21	94
JM(JGB)-300	Φ 17, Φ 21	30	24	104.5
JM(JGB)-400	Φ 17, Φ 21	34	27	115.5
JM(JGB)-500	Φ 17, Φ 21	38	30	126.5
JM(JGB)-630	Φ 21, Φ 23	45	35	139.5
JM(JGB)-800	Φ 23	50	39	
JM(JGB)-1000	Φ 23	56	44	

Dimension





Cable lug

AUS series are made from copper tube, it has at least 99.9% purity, It is accordance with DIN 46235. Application up to 33kv, surface is finished with tin 8m mini, or copper finish on request.

Type	6-5	6-6	6-8	10-5	10-6	10-8	16-6	16-8	16-10	16-12	25-6	25-8	25-10	25-12	
mm	L	30.5	31.5	34	34	34.5	37	43.5	46	48	49	45.5	48	50	51
	D	5.5	5.5	5.5	6	6	6	8.5	8.5	8.5	8.5	10	10	10	10
	d	3.8	3.8	3.8	4.5	4.5	4.5	5.5	5.5	5.5	5.5	7	7	7	7
	Φ	5.3	6.4	8.4	5.3	6.4	8.4	6.4	8.4	10.5	13	6.4	8.4	10.5	13

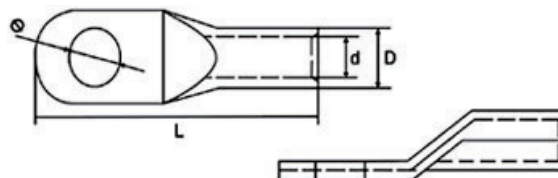
Type	35-6	35-8	35-10	35-12	35-14	50-8	50-10	50-12	50-14	50-16	70-8	70-10	70-12	70-14	
mm	L	49.5	52	54	55	56.5	62	64	65	66.5	68	65	67	68	69.5
	D	12.5	12.5	12.5	12.5	12.5	14.5	14.5	14.5	14.5	14.5	16.5	16.5	16.5	16.5
	d	8.2	8.2	8.2	8.2	8.2	10	10	10	10	10	11.5	11.5	11.5	11.5
	Φ	6.4	8.4	10.5	13	15	8.4	10.5	13	15	17	8.4	10.5	13	15

Type	70-16	95-8	95-10	95-12	95-14	95-16	120-10	120-12	120-14	120-16	120-20	150-10	150-12	150-14	
mm	L	71	77	77	78	79.5	81	85	86	88	89	91	93	94	97
	D	16.5	19	19	19	19	19	21	21	21	21	21	23.5	23.5	23.5
	d	11.5	13.5	13.5	13.5	13.5	13.5	15.5	15.5	15.5	15.5	15.5	17	17	17
	Φ	17	8.4	10.5	13	15	17	10.5	13	15	17	21	10.5	13	15

Type	150-16	150-20	185-10	185-12	185-14	185-16	185-20	240-12	240-14	240-16	240-20	300-14	300-16	300-20
mm	L	97	99	97	98	101	101	103	108	111	111	113	119	122
	D	23.5	23.5	23.5	23.5	23.5	25.5	25.5	29	29	29	27	32	32
	d	17	17	19	19	19	19	19	21.5	21.5	21.5	21.5	24.5	24.5
	Φ	17	21	10.5	13	15	17	21	13	15	17	21	15	17

Type	400-14	400-16	400-20	500-16	500-20	630-16	630-20	800-16	800-20	1000-16	1000-20	
mm	L	140	140	140	150	150	160	160	195	195	195	
	D	38.5	38.5	38.5	42	42	44	44	52	52	58	
	d	27.5	27.5	27.5	31	31	34.5	34.5	40	40	44	
	Φ	15	17	21	17	21	17	21	17	21	21	

Dimension

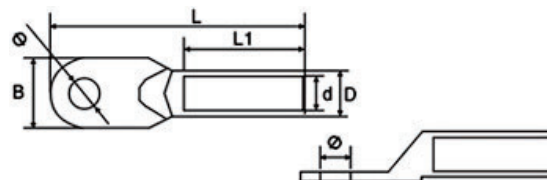


Aluminium lug

DL series are manufactured from aluminium bar and it has at least 99.5% purity.

Type	Dimensions(mm)					
	Φ	D	d	L	L1	B
DL-16	6.5	10	5.7	70	32	16
DL-25	8.5	12	7	75	34	18
DL-36	8.5	14	8	85	38	20.5
DL-50	10.5	16	9.5	90	40	23
DL-70	12.5	18	11.5	100	42	26
DL-95	12.5	20	13.5	110	48	28
DL-120	14.5	22	15	120	53	30
DL-150	14.5	24	16.5	125	55	34
DL-185	17	27	18.5	135	57	37
DL-240	17	30	21	140	60	40
DL-300	21	34	23	165	65	50
DL-400	21	38	26	170	70	50

Dimensions



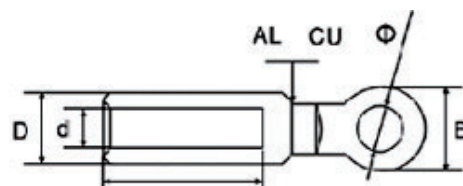
Bimetal Lug A Type

CAL-A series bimetal lug are suitable for transition connection of the circular aluminium wires, hemicycles-sector aluminium wires, power supply cables in the distribution equipment and copper terminals of the electrical equipment. They are made from Cu99.9% purity and Al99.5% purity. The barrel is friction welded to the palm so that the best possible transition between copper palm and aluminium barrel. To avoid oxidization of the aluminium barrels capped are greased. When crimping, it forces the joint compound into conductor strands.

We are able to produce special bimentals on request.

Type	Dimensions(mm)				
		D	d	L1	B
CAL-16A	10.5	16	5.8	42	20
CAL-25A	10.5	16	6.7	42	20
CAL-35A	10.5	16	8.2	42	20
CAL-50A	10.5	20	9.2	43	24
CAL-70A	10.5	20	11.2	43	24
CAL-95A	10.5	20	12.7	43	24
CAL-120A	13	25	13.9	60	30
CAL-150A	13	25	15.7	60	30
CAL-185A	13	32	17.8	60	35
CAL-240A	13	32	19.7	60	35
CAL-300A	13	34	23.5	62	36
CAL-500A	16.7	41	29	93	36

Dimensions



1

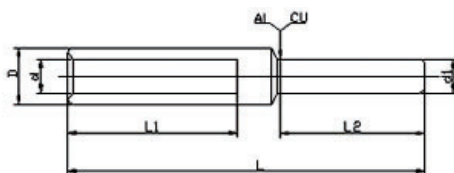

Compression joints al with copper connecting bolt

E copper 99.9%, AL 99.5% at least

Finish bright

Type	Dimensions(mm)					
	L	L1	L2	D	d	d1
50 ²	74	35	25	16	10	8
70 ²	87	42	30	18.5	11.5	10
95 ²	91	45	33	22	13.2	12
120 ²	97	45	38	23	15	12
150 ²	108	55	38	25	16.5	12
185 ²	116	55	44	28.5	18.5	14
240 ²	128	63	44	32	21.5	16

Dimensions



Bimetal Link

GTL series are made from copper and aluminium, Cu has at least 99.9% purity and AL has at least 99.5% purity.

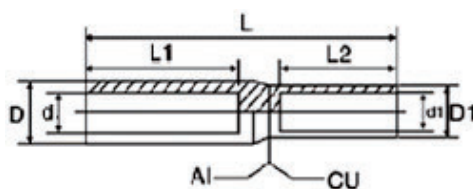
It is friction welded.

To avoid oxidization of the aluminium barrels capped are greased, When crimping, it forces the joint compound into conductor strands, We are able to produce special bimentals on request.



Type	Dimensions(mm)						
	D	d	D1	d1	L1	L2	L
GTL-10	9	4.8	7.8	4	28	25	65
GTL-16	10	6	9	5	30	30	70
GTL-25	11	7	10	5.7	33	30	75
GTL-35	13	8.5	11	7	40	30	85
GTL-50	15	9.8	12	8.5	42	32	95
GTL-70	18	11.5	14	9.5	47	38	105
GTL-95	20	13.5	16	11.5	50	40	110
GTL-120	22	15	19	13.5	53	42	112
GTL-150	24	16.5	21	15	55	44	118
GTL-185	27	18.5	23.5	17	58	46	125
GTL-240	30	21	26	18.5	60	54	130
GTL-300	34	23.5	28	21	65	56	145
GTL-400	36	27	30	23.5	70	60	155
GTL-500	47	29	34	27	75	65	165

Dimensions



Aluminium link-barrier type

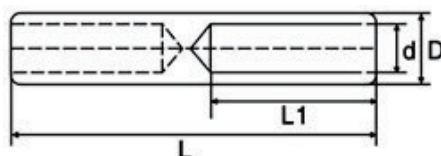
GL series are made from solid at least 99.5% pure electrical grade aluminium rod.

The links are a barrier type, mainly because this forces jointing compound back along the conductor strands during crimping, and also to act as a barrier link with oil filled cables. The barrels are filled with jointing compound and capped.

Our standard range is shown in the table, however GREEGOO can make any especial aluminium links on request.

Type	Dimensions(mm)			
	D	d	L1	L
GL-16	10	6	30	70
GL-25	12	7	32	75
GL-35	14	8.5	37	85
GL-50	16	9.7	42	95
GL-70	18	11.5	47	105
GL-95	20	13.5	50	110
GL-120	22	15	52	115
GL-150	24	16.5	55	115
GL-185	27	18.5	57	125
GL-240	30	21	60	130
GL-300	34	23.5	64	140
GL-400	35	27	70	160

Dimensions



Electrical jointing compound

Inhibit oxidation and conductivity contact grease

■ FOR ALUMINUM AND COPPER JOINTING electropar's jointing compounds are formulated to improve jointing conductivity and inhibit oxidation and corrosion between jointing contact areas. Jointing compound should always be applied to the contact surfaces of all aluminium to aluminium, aluminium to copper and copper to copper connections prior to compression or bolting.

■ EP Uniseal consists of a lithium based 100C stable grease and zinc particles. The base grease prevents water and contaminants interfering with the connection and prevents the formation of surface oxide. The zinc particles work to break down existing oxide on the conducting surfaces when those surfaces are brought together under pressure, EP Uniseal is ideal for aluminium to aluminium and aluminium to copper compression or bolted joints.

Always wire brush to clean the conductor and contact area before applying Jointing Compound.



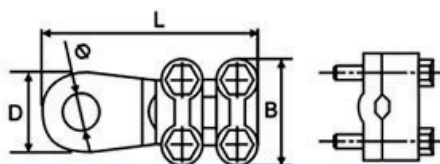
**Bolted type connector**

WCJB series are made from copper, bolted type. Tin finished or copper colour on request. WCJC, They are all made from brass, boled type, Finished with nickle, They are suitable for transitional connection of electrical apparatus with wire and cable in indoor distribution equipment.

They can be reused may times. Quick and easy way of making a connection.

Type	L	B	D	Φ
WCJB-6/10	31	18.5	15	6.5
WCJB-16/25	46.25	24	18.5	8.5
WCJB-25/35	52.75	24	21.5	10.5
WCJB-50/70	62.75	31	23.5	10.5
WCJB-70/95	69	34	24	13
WCJB-120/150(1)	76	42	30	13
WCJB-120/150(2)	76	42	30	17
WCJB-185/240(1)	85.5	48.5	34	17
WCJB-185/240(2)	88.5	48.5	36	21
WCJB-240/300	87.25	50.5	34.5	21

Type	Dimensions(mm)		
	L	B	Φ
WCJC-16	37	21.5	8
WCJC-25/35	48	23	11
WCJC-50/70	61	30	11
WCJC-70/95	66.5	33	13
WCJC-120/150	73	36	15
WCJC-210/250	91	46	17
WCJC-300	105	55	21
WCJC-400/500	122	60	23

Dimensions

They are a quick and easy way of making a connection. And they can be reused may times.

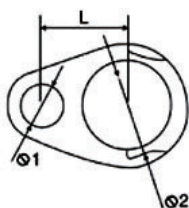
WCJE	WCJF	WCJG-H	WCJG-T	D-9	WCJH	CER	WCJD
10/50	10/50	10/50	10/50	20/40	25/35	12mm	95mm
16/95	25/120	25/120	25/120	/	50/70	14mm	150mm
/	/	/	/	/	150/185	16mm	30mm
/	/	/	/	/	/	18mm	/

CCO type aluminium connector

CCO TYPE connector are made from aluminium which its least 99.55, To avoid oxidization of the aluminium is filled with jointing compound.

Type	L	M	B
CCO10-16/10-16	8.2	6.2	6.2
CCO06-25/06-25	10.2	7.2	7.2
CCO06-25/35-70	12.85	7.2	12.5
CCO16-35/16-35	11.5	8.5	8.5
CCO25-35/10-16	11	5.7	9.5
CCO50-70/10-16	11	5.7	11.5
CCO70-150/35-40	18.9	12.5	17
CCO70-150/70-150	21	17	17
CCO120-300/35-40	21.2	13	22.4

Dimensions

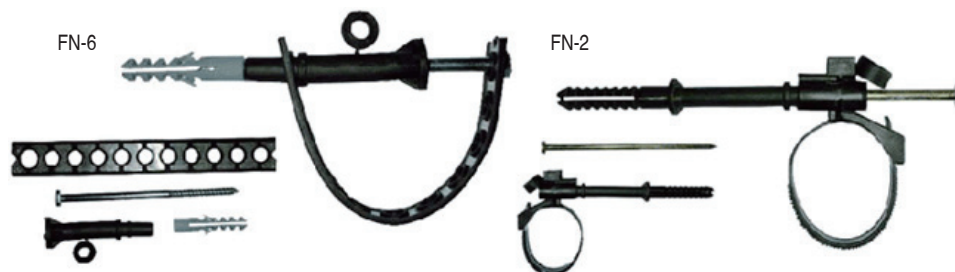


Aluminium Pg Clamp

ALPG series are used for tapping or joining AAC,AAAC or ACSR overhead conductors, They are forged not extruded, which creates a high strength clamp.

Type	Description	Bolt
ALPG	6-35	Single bolt
ALPG	25-35	Single bolt
ALPG	16-70	Single bolt
ALPG	16-70	Double bolt
ALPG	50-70	Double bolt
ALPG	95-120	Tri-bolt
ALPG	16-150	Double bolt
ALPG	35-300	Tri-bolt

Fixing Nail





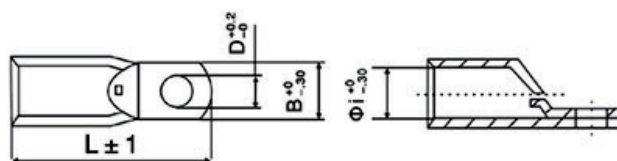
Circuit breaker lug

TM lugs are specially made for terminating large cables to circuit breakers.

These lugs are made from at least 99.9% high conductivity copper which gives the best electrical properties possible. Finish with tin

Type	mm			
	L	D	d	Φ
10-5	27	5.3	9	4.3
16-5	31	5.3	9	5.6
25-5	35	5.3	9	7
35-5	40.5	6.4	11.5	8.4
50-8	45.5	8.4	12.8	9.5
70-8	49	8.4	12.8	11.2
95-8	54	8.4	15.5	13.5
120-8	68	8.4	19.0	15.6
120-10	68	10.5	19.0	15.6
150-8	75	8.4	19.0	16.7
150-10	75	10.5	19.0	16.7
185-10	79	10.5	24.5	19
240-10	86	10.5	29.8	21.1
240-12	92	13.2	29.8	21.1
240-16	100	17.0	29.8	21.1
300-12	97	13.2	31.0	23.7

Dimensions



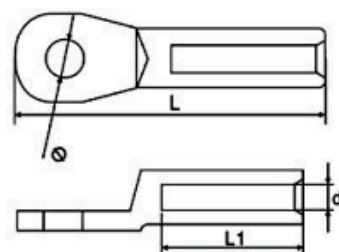
Din aluminium lug

AU series are made from aluminium and it has at least 99.5% purity. It is accordance with DIN46239, Surface bright or tin plated at least 15m. To avoid oxidization of the aluminium barrels capped are greased.



Type	Dimensions(mm)			
	Φ	d	L	L1
AU-16	8.4	5.8	60	29
AU-25	10.5	6.8	62.5	29
AU-35	10.5	8	77	41
AU-50	10.5	9.8	78.5	42
AU-70	10.5	11.2	85	51
AU-95	13	13.2	90	55
AU-120	13	14.7	96	55
AU-150	13	16.3	106	59
AU-185	13	18.3	108	59
AU-240	17	21	124	69
AU-300	17	23.3	125	69

Dimensions

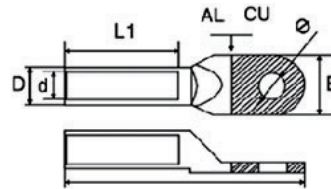


Bimetal lug

DTL series bimetal lug are suitable for transition connection of the circular aluminium wires, hemicycles-sector aluminium wires, power supply cables in the distribution equipment and copper terminals of the electrical equipment. They are made From Cu99.8% purity and AL99.5% purity. The technology of friction welding is wonderfully adopted.

Type	Dimensions(mm)					
	Φ	D	d	L	L1	B
DTL-10	6.5	9	4.8	62	23	13.5
DTL-16	8.5	10	5.8	70	32	16
DTL-25	8.5	12	7.2	75	34	17.5
DTL-35	10.5	14	8.5	85	40	20
DTL-50	10.5	16	9.7	90	42	23
DTL-70	12.5	18	11.5	102	47	24
DTL-95	12.5	20	13.5	112	50	28
DTL-120	14.5	22	15	120	53	31
DTL-150	14.5	24	16.5	125	55	35
DTL-185	17	27	18.5	133	58	37.5
DTL-240	17	30	21	140	60	40
DTL-300	18.5	34	23.5	160	65	44.5
DTL-400	21	38	27	170	70	50
DTL-500	21	47	29	225	75	60

Dimensions



Bimetal lug B type

CAL-B series bimetal lug are suitable for transition connection of the circular aluminium wires, hemicycles-sector aluminium wires, power supply cables in the distribution equipment and copper terminals of the electrical equipment.

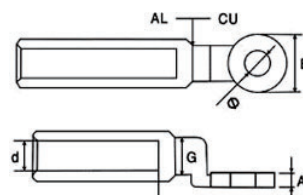
They are made from Cu99.9% purity and Al99.5% purity. The barrel is friction welded to the palm so that the best possible transition between copper palm and aluminium barrel. To avoid oxidization of the aluminium barrels capped are greased. When crimping, it forces the joint compound into conductor strands.

We are able to produce special bimetals on request.

Note: CAL-500B which copper palm is square.

Type	Dimensions(mm)				
	Φ	d	B	G	A
CAL-25B	10.5	6.5	20	12	4
CAL-50B	13	9.5	24	14.8	5
CAL-70B	13	11	24	14.8	5
CAL-95B	13	12.5	24	28	5
CAL-120B	13	13.7	30	18.8	6
CAL-150B	13	15.5	30	18.8	6
CAL-185B	13	17	35	23.8	7
CAL-240B	13	19.5	35	23.8	7
CAL-300B	17	23.3	36	25	7.5
CAL-400B	17	26.5	36	25	7.5
CAL-500B		29.1	60	37	10

Dimensions



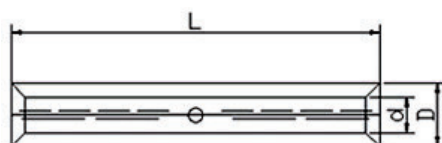
Din joint 46267

For non tension connections of ALU. Conductors DIN48201

Aluminium at least 99.5%

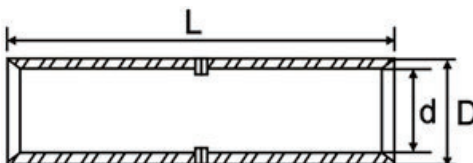
Bright finish

Type	Dimensions(mm)		
	L	D	d
25 ²	70	12	6.8
35 ²	85	14	8
50 ²	85	16	9.8
70 ²	105	18.5	11.2
95 ²	105	22	13.2
120 ²	105	23	14.7
150 ²	125	25	16.3
185 ²	125	28	18.3
240 ²	145	33	21

Dimensions**Cable link**

GTY series are made from copper tube, it has at least 99.9% purity, Surface is finished with tin.

Type	Dimensions(mm)		
	L	D	d
GTY-1.5	20	3.35	1.9
GTY-2.5	20	4	2.6
GTY-4	20	4.8	3.2
GTY-6	25	5.6	3.7
GTY-10	30	6.3	4.5
GTY-16	35	7.5	5.7
GTY-25	40	9	7.2
GTY-35	45	10.8	8.5
GTY-50	50	12.5	9.5
GTY-70	55	14.5	11.5
GTY-95	60	17	13.7
GTY-120	65	19	15
GTY-150	70	21	16.7
GTY-185	75	23	18.5
GTY-240	80	26	21
GTY-300	85	30	24
GTY-400	90	34	27
GTY-500	100	38	30
GTY-630	110	45	35
GTY-800	150	50	39
GTY-1000	170	56	44

Dimensions

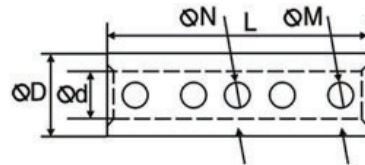


Bolted brass sleeve

ETC series are made from brass and it has at least 62% purity.
Surface finish with nickel.

Type	L	D Φ	d Φ	N Φ	M Φ
ETC-10/16	40	10	5.5	3.3	4
ETC-16/25	45	12	7	4.2	5
ETC-25/35	45	13	8.5	5.2	6
ETC-35/50	50	15.5	10	4.4	8
ETC-50/70	55	17	11.8	5.4	8
ETC-70/95	55	20	13.6	5.4	8

Dimensions



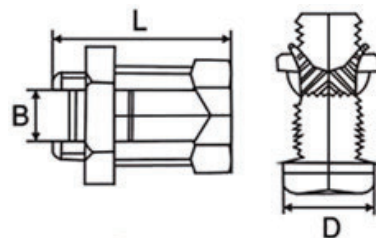
Split bolt

GREEGOO has a complete range of split bolts which are used for tapping or joining aircal hard drawn copper conductors or insulated copper conductors.

The products are made from a hard grade high conductivity brass. Finish with tin or copper on request.

Type	L	Thread	B	D
SB-16/35	38	5/8-18UNF	8	17
SB-25/50	42	3/4-16UNF	9.5	19
SB-50/70	46	3/4-16UNF	11	21
SB-95/120	50	1-12UNF	14.5	26
SB-150/185	60	12UNF	18	30
SB-200/240	65	12UNF	20.2	32
SB-16	30	19UNF	6	14
SB-25	32	18UNF	7	17
SB-35	38	18UNF	8	17
SB-50	42	16UNF	9.5	19
SB-70	46	16UNF	11	21

Dimensions



1

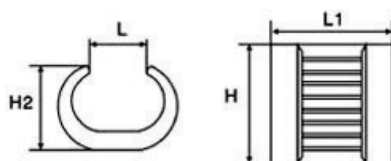


U-T type connector

U-T type of connectors are made from copper at least 99.9%, finish with tin at least 3 microns. Dimpled or serrated to obtain high pull-out value. Chamfered edges designed to protect the wire. Stamped lines show proper crimp dies position. If a connector is not listed for your application please contact GREGOO sales, as we continually adding to the range.

Type	L	L1	H	H2	Conductor range
U-T44	8.3	19	20	14	27-44
U-T60	10.8	21.4	22.5	15	45-60
U-T76	9.5	24	22.5	17	61-76
U-T98	14.5	28	25	19	77-98
U-T122	14	29.3	26	21	99-122
U-T154	17	35	28	25	123-154
U-T190	17	36.5	35	25	155-190
U-T240	20	40	40	29	191-240

Dimensions



Bimetal Pg Clamp

CAPG series are used for tapping or joining copper conductor to aluminium overhead conductor AAC, AAAC or ACSR. These bimetal PG clamps are made from high corrosion resistance aluminium alloy with parallel grooves with serrated grooves in the clamp. Tap off conductor groove is lined with hot compressed bimetallic sheet on the upper and the lower part of the connector body(molecular compound), contact area between copper and aluminium part sealed with epoxy resin. Bottom part of connector is threaded to provide ease of installation.

Type	Description	Bolt
CAPG-A1	Cu6-50 ² Al16-70/12 ²	Single bolt
CAPG-A2	Cu10-95 ² Al25-150 ²	Single bolt
CAPG-B1	Cu6-50 ² Al16-70 ²	Double bolt
CAPG-B2	Cu10-95 ² Al25-200 ²	Double bolt
CAPG-C	Cu25-185 ² Al25-200 ²	Double bolt
CAPG-D1	Cu6-240 ² Al35-300 ²	Double bolt
CAPG-D2	Cu6-240 ² Al35-300 ²	Tri-bolt



JBL



JBL



JBL-A



JBL-B



JBL-C



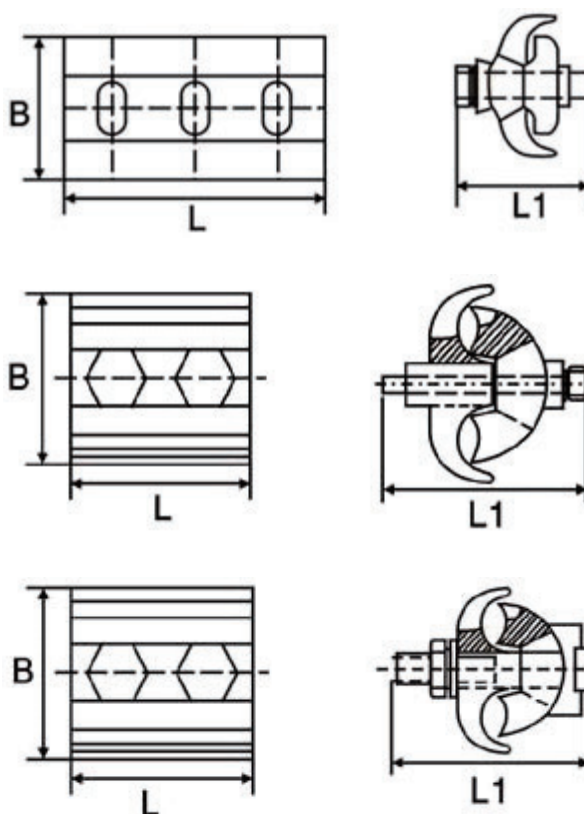
JBL-D

Aluminium Combined Clamp

JBL series are made from high strength aluminium alloy (extruded shaped bar).

Type		L1	L	B
JBL-A(16-120)	Double bolt/Tri-bolt	50/50	59/84	46/46
JBL-A(35-240)	Tri-bolt	70	106	65
JBL-B(16-120)	Double bolt/Tri-bolt	50/50	48/64	46/46
JBL-B(50-240)	Double bolt/Tri-bolt	65/65	50/70	62/62
JBL-C(16-70)	Double bolt	45	40	35
JBL-C(16-120)	Double bolt/Tri-bolt	55/55	48/64	46/46
JBL-C(50-240)	Double bolt/Tri-bolt	70/70	50/70	62/62
JBL-C(120-300)	Double bolt/Tri-bolt	75	90	74
JBL-D(16-120)with cover	Double bolt	50	40	46

Dimensions



**Insulated piercing connector****Application:**

A broad usage in the low voltage insulation lines, leading the branch connection from the main conductor; T-connection of low voltage insulation wire service and cable branch connection for the building distribution system.

Features:

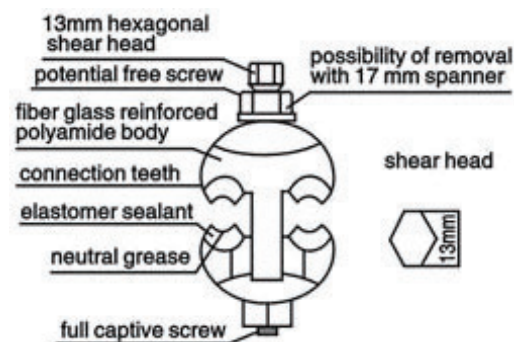
The clamps with specially designed contact teeth, are suitable for the connection of aluminum and copper. Outside insulation shield is adopted glass fibre reinforce high polymer material. It is unnecessary to remove the insulation layer of the connector when using. Put the main conductor and branch conductor parallel into the teeth groove of the clamp, tighten the bolt, and then pierce the insulation of two conductors at the same time to make the conductors connect. The insulation conductor is covered with the insulation shield and sealed, then the functions as waterproof and sealing perfectly.

Performance:

Mechanical performance: at the breaking force of the conductor, the clamp should not be broken. Rising temperature performance: at the rated current and short circuit, the surface rising temperature of the clamp should be less than the connecting conductor. There is no breakdown when is under water 30cm, and 6kv, lasting 1 min.

A broad usage in the low voltage insulation lines, leading the branch connection from the main conductor; T-connection of low voltage insulation wire service and cable branch connection for the building distribution system.

Type	Cross section of the main conductor(mm ²)	Cross section of the tap conductor(mm ²)
JBC-1	16-95	1.5-10
JBC-2	16-95	2.5-35
JBC-3	25-95	25-95
JBC-4	35-150	35-150
JBC-4-2B	35-150	35-150
JBC-5	70-240	70-240

Dimensions

Insulated piercing connector

Application:

A broad usage in the low-voltage insulation lines, leading the branch connection from the main conductor. T-connection of low voltage insulation wire service and cable branch connection for the building distribution system functioned together.

Material:

The material for the inside body is adopted high strength aluminum alloy 6061. And the outside insulation cover is used polyvinyl chloried(PVC).

Features:

The connector with specially designed contact teeth, are suitable for the connection of aluminum put the main conductor and branch conductor parallel into the teeth groove of the connector, tighten the both bolts, and then the teeth pierce the insulation of two conductors to make the conductor connect. The insulation PVC cover outside functions as waterproof and sealing perfectly.

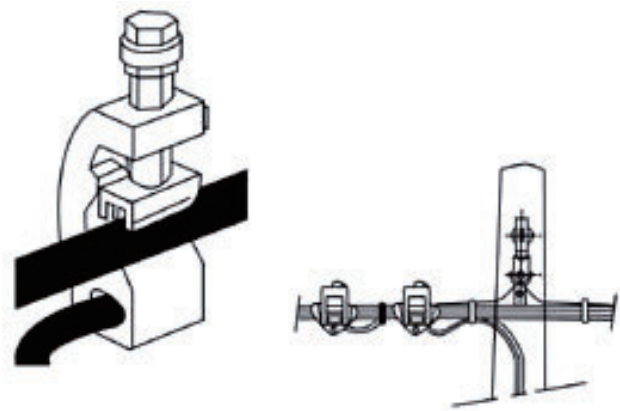
Performance:

At the breaking force of the conductor. The connector will not be distorted and broken. At the rated current and short circuit, the surface rising temperature of the connector should be less than the connecting conductor.

A broad usage in the low voltage insulation lines, leading the branch connection from the main conductor; T-connection of low voltage insulation wire service and cable branch connection for the building distribution system.

Type	Cross section of the main conductor(mm ²)	Cross section of the tap conductor(mm ²)
JBD-1	16-25	4-25
JBD-2	35-70	6-25
JBD-3	35-70	35-70
JBD-4	35-95	4-50
JBD-5	70-150	4-50

Dimensions





Support Bracket

JBE-1 support bracket for ABC conductors (consoles d'ancrage)

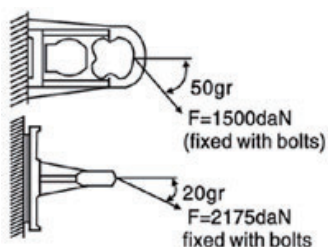
USE: anchor of ABC cables with neutral messenger on poles (wood, concrete etc...)

FIXING: 2 of 14 or 16mm bolts or by 2 stainless steel straps 20x0.7mm.

CORROSION RESISTANT: excellent in industrial and saline environment.

MATERIAL: high resistance aluminum alloy.

Dimensions



Anchoring clamp

JBGA is made from extruded aluminium alloy, for high mechanical stability, reduced dimensions for easier handling, high mechanical and climatic resistance.

JBGB is made from high strength aluminium alloy (casting).

Cable gripping device in insulating material ensures the double insulation of the neutral core and avoids damage to sheath, secured parts, no tools required. Stainless steel bail with two marbles compressed on the end, this conception allows an easier locking on the body of the clamp, thermo plastic saddle to protect the bail.



JBGA



JBGB

Type	Section (sq mm ²)	Slipping (daN)	Flashover resist
JBGA-1	35	1500	6KV
JBGA-2	54-70	1500	6KV
JBGB-1	54.6-70	1500	6KV

Suspension Clamp

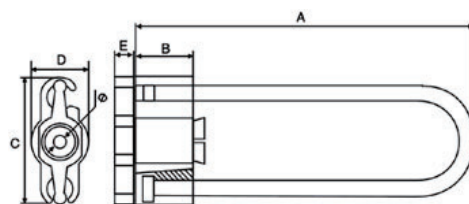
USE: on poles, in alignment or angle, with or without difference of level, also provide for hanging a public light bundle.

Type	Breaking point (daN)	Conductor range
F-ALM	1200	54.6-700mm ²
F-ALM	1500	16-50mm ²
F-M	1500	50mm ²
SPC-1	1500	25-30 (4x35/50mm ²)
SPC-2	1500	32-38 (4x70/95mm ²)
SPC-3	1500	42-47 (4x120/150mm ²)

Dead end clamp

JBH dead end clamps are used for the anchoring of the uninsulated messenger by means of hooks to either a pole or a wall. The clamps have no loose parts.

Type	Description(mm ²)	A	B	C	D	E	Φ	Failure load kn
JBH-1	16	120	22	48.4	22.5	7	5.5	4.0
JBH-2	25	130	22	48.4	22.5	7	7	6.6
JBH-3	35	187	30	57.3	29.6	8	9	9.3
JBH-4	50	187	30	57.3	29.6	8	10	13.2
JBH-5	70	187	30	57.3	29.6	8	11.7	15

Dimensions**One Core Strain Clamp**

NXJ1-core centralized straining clamp is suitable for the end of aerial wire terminal, its function is fixing or tightening the insulation conductor. They are made from high strength aluminium alloy (casting).

Type	Specification (mm ²)	Aerial insulation aluminium conductor		Grip strength (KN)	Failure load (KN)
		1KV DIA(mm)	10DV DIA(mm)		
NXJ-1	35	9.8	15.8	3.4	13.7
	50	11.2	17.1	4.6	
	70	12.8	18.8	6.7	
	95	14.8	20.4	8.9	
NXJ-2	120	16.2	21.8	11.3	34.7
	150	18.2	23.4	13.6	
	185	20.2	25.0	17.3	
	240	22.6	27.2	22.5	
NXJ-3	195	20.2	25.0	17.3	43.4
	240	22.6	27.2	22.5	
	300		29.4	28.2	



Bolted type strain clamp

NLL series bolted type strain clamp is suitable for aerial line up to 35KV, fixing aluminium wire or steel core minimum wire on the strain pole, aerial insulation aluminium conductor and insulation cover can be used together. Its action is insulation protection.

The body is made from high-strength aluminium alloy (casting).

Smooth surface makes long service life.

Easy installation.

No waste electric energy.

Type	Conductor range (mm ²)	Description		U Bolt		Failure load KN
		1KV(mm ²)	10KV(mm ²)			
NLL-1	5.0~10.0	25~70	10~25	2	M12	40
NLL-2	10.1~14.0	50~120	25~50	2	M12	40
NLL-3	14.1~18.0	120~240	70~120	3	M14	70
NLL-4	18.1~23.0	185~300	150~240	3	M14	90



Wedge Type Strain Clamp

NXL series strain clamp (wedge type) is suitable for distribution wire up to 10KV, fixing the aerial insulation aluminium conductor or naked aluminium conductor on the rotate angle or insulator of terminal strain pole, and then fixing and tightening the aerial conductor.

Insulation cover is available, it can be used together with the clamp. Its action is insulation protection.

It is made from high strength aluminium alloy (casting).

Open-design, without waste electric power.

Wedge-locked structure, easy installation.

All parts are connected each other, never lose part during unload.

An arc embrace the most part, conductor can't change.

Large grip strength.

Type	Description (mm ²)	Length (mm)	Grip strength (KN)	Failure load (KN)	Insulation cover type
NXL-1	80	245	5.16	14.5	NXL-95
	70		7.12		
	95		9.40		
NXL-2	120	255	12.70	23.4	NXL-150
	150		15.20		
NXL-3	185	300	18.50	36.3	NXL-240
	240		23.60		



Four cores strain clamp

NXJA4-core centralized strain clamp is suitable for the end of aerial wire terminal, its action is fixing or tightening the insulation conductor.

They are made from high strength aluminium alloy (casting).

The clamp has designed for 4 cores parallel groove, after clamping four insulation conductors (not remove the insulation layer) (tighten up the bolt, have large grip strength).

Type	Applicable conductor (mm ²)	Failure strength (KN)
NXJA-1	16-50	11.7
NXJA-2	70-120	17.3



U-7



U-1880



PS-7



PH-7



UL-7



JK-1

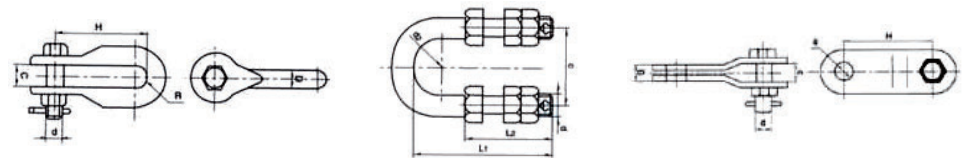
Chackle

Type	C	d	D	H	R	Failure load(KN)	Weigh(KG)
U-7	20	16	16	80	10	≥70	0.5
U-10	22	18	18	85	11	≥100	0.6
U-12	24	22	20	90	12	≥120	1.0
U-16	26	24	22	95	13	≥160	1.47
U-21	30	27	24	100	15	≥210	2.30
U-25	34	30	26	110	17	≥250	2.80
U-30	38	36	30	130	19	≥300	3.70
U-50	44	42	36	150	22	≥500	7.00

Type	C	d	d2	L1	L2
U-1880	80	M18	18	90	60
U-2080	80	M20	20	100	70
U-2280	80	M22	22	118	90

Type	C	b	d	Φ	H	Failure load(KN)	Weigh(KG)
PS-7	16	16	16	20	90	≥70	0.58

Dimensions

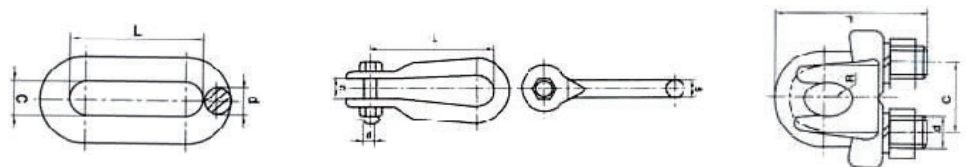


Type	C	d	L	Failure load(KN)	Weigh(KG)
PH-7	20	16	80	≥70	0.37
PH-10	22	18	100	≥100	0.61
PH-12	24	20	120	≥120	0.88
PH-16	26	22	140	≥160	1.20
PH-21	30	24	160	≥210	1.62
PH-25	34	26	160	≥250	1.97
PH-30	36	30	180	≥300	2.95

Type	C	d	D	H	R	Failure load(KN)	Weigh(KG)
UL-7	20	16	16	120	15	≥70	0.65
UL-10	22	18	18	140	17	≥100	0.92
UL-12	24	22	20	140	18	≥120	1.40
UL-16	26	24	22	140	19	≥160	1.64
UL-21	30	27	24	160	22	≥210	2.9

Type	N	L	S	R	Steel wire dia(mm)	Weigh(KG)
JK-1	10	54	22	5	6.6-7.8	0.2
JK-2	10	72	28	6	9.0-11.0	0.3

Dimensions





Q-7



QP-7



WS-7



W-7B



Z-7



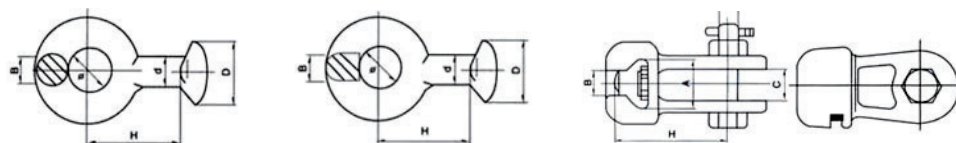
P-7

Eye ball

Type	Insulator	d	Φ	D	H	Failure load(KN)	Weigh(KG)
Q-7	XP-7,X-4.5	17	22	33.3	50	≥70	0.27
QP-7	XP-4.5,XP-7	17	22	33.3	50	≥70	0.24
QP-10	XP-10	17	22	33.3	50	≥100	0.32
QP-16	XP-16	21	26	41.0	60	≥160	0.50
QP-21	XP-21	25	30	49.0	80	≥210	0.95
QP-30	XP-30	25	39	49.0	80	≥300	1.05

Type	Insulator	d	Φ	D	H	Failure load(KN)	Weigh(KG)
WS-7	XP-7,X-4.5	18	19.2	16.0	70	≥70	0.97
WS-10	XP-10	20	19.2	18.0	85	≥100	1.20
WS-16	XP-16	26	23	24.0	95	≥160	2.64
WS-21R	XP-21	30	27.5	27.0	100	≥210	4.30
WS-30R	XP-30	38	27.5	36.0	110	≥300	5.70

Dimensions



Type	Insulator	d	B	A	H	Φ	Failure load(KN)	Weigh(KG)
W-7A	XP-7,X-4.5	16	19.2	34.5	70	20	≥70	0.85
W-7B	XP-7,X-4.5	16	19.2	34.5	115	20	≥70	1.01

Type	c	d	H	Failure load(KN)	Weigh(KG)
Z-7	18	16	80	≥70	0.64
Z-10	20	18	80	≥100	0.83
Z-12	24	23	100	≥120	1.32
Z-16	26	24	100	≥160	2.48

Type	C	b	d	Φ	H	Failure load(KN)	Weigh(KG)
ZS-7	18	16	16	20	80	≥70	0.58
ZS-10	20	18	18	20	80	≥100	0.90

Type	h	C	d	H	Failure load(KN)	Weigh(KG)
P-7	6	18	16	70	≥70	0.60
P10	8	20	18	80	≥100	0.85
P-12	10	24	22	90	≥120	1.52
P-16	12	26	24	100	≥160	2.42